


A photograph of three hands, each holding a small green seedling with four leaves in a mound of dark brown soil. The hands are positioned in a triangular arrangement, with the top hand slightly behind the other two. The background is a soft-focus green, suggesting an outdoor garden setting.

PRESENTATION 2023

The logo consists of a dark teal circle containing the white text 'ELCA'.

ELCA

EUROPEAN **LANDSCAPE** CONTRACTORS ASSOCIATION



ELCA: lobbying on
behalf of the
landscape and
gardening branch



ELCA

ELCA is the European
association of the landscape
professionals

26

23 countries are affiliated to ELCA and
3 countries as associated member

13.000

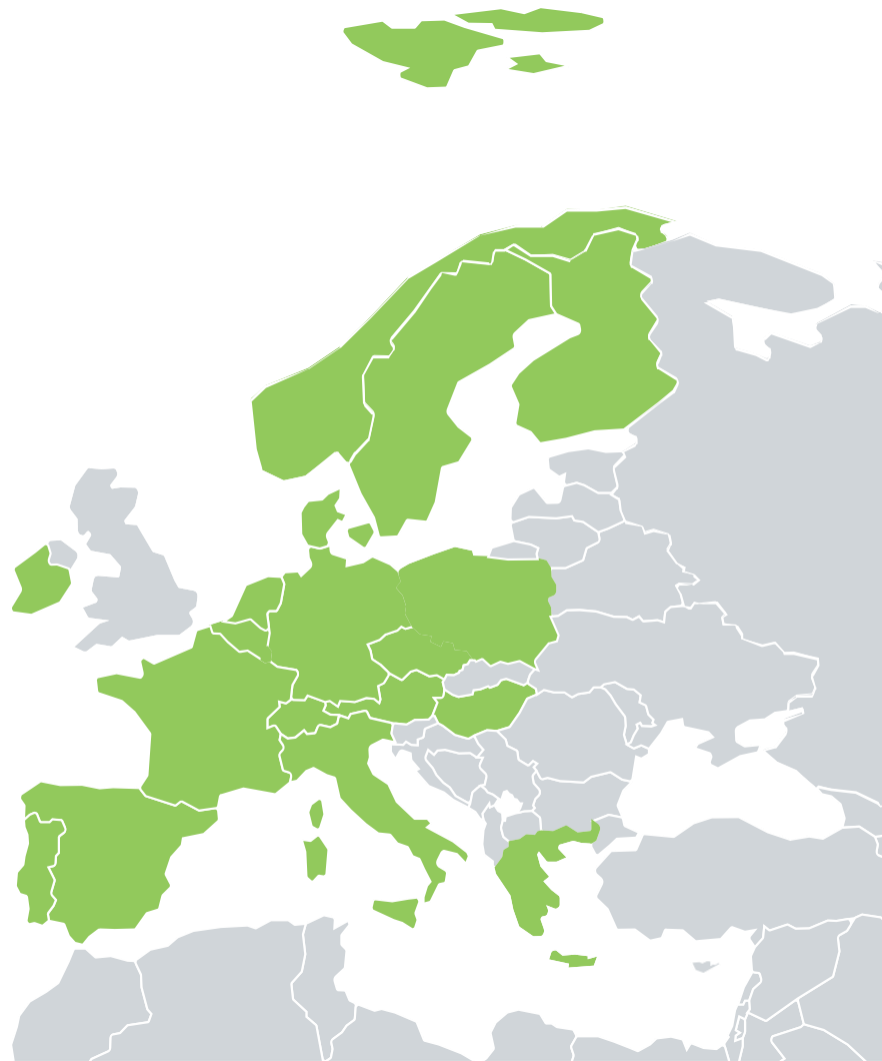
together representing 13.000 companies

125.000

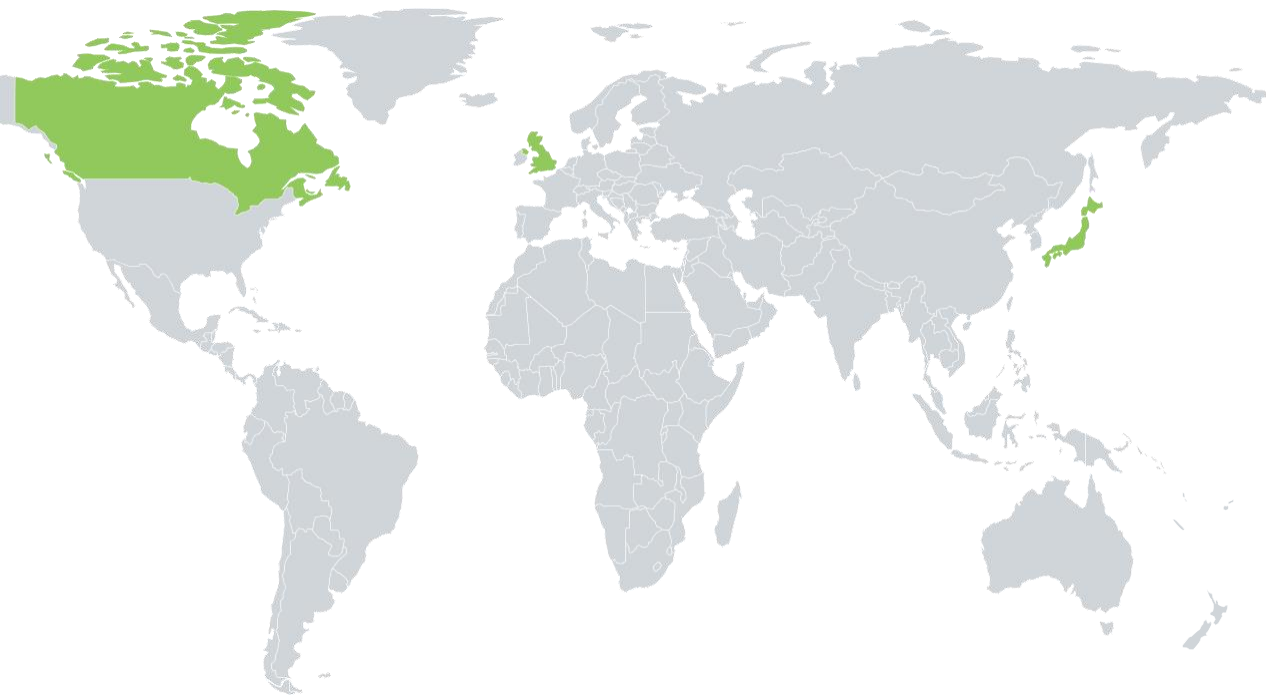
and 125.000 employees.

ELCA MEMBERS

- AUSTRIA
- BELGIUM
- CZECH REPUBLIC
- DENMARK
- ESTONIA
- FINLAND
- FRANCE
- GERMANY
- GREECE
- HUNGARY
- IRELAND SOUTH
- ITALY
- LATVIA
- LUXEMBOURG
- MALTA
- NORWAY
- POLAND
- PORTUGAL
- ROMANIA
- SPAIN
- SWEDEN
- SWITZERLAND
- THE NETHERLANDS



ELCA ASSOCIATED MEMBERS



- **CANADA**
CNLA Canadian Nursery Landscape Association
- **GREAT BRITAIN**
BALI British Association of Landscape Industries
- **JAPAN**
Federation of Landscape Contractors



A large dark teal circle is the central focus, containing the text 'ELCA committee of firms'. It is surrounded by several other circles: a medium-sized light green circle at the top left, a small light green circle at the bottom right, and a thin light green outline circle to the left. A small light green circle is also positioned to the right of the main circle.

ELCA committee of firms

A small dark teal circle containing the text 'ELCA' in white.

ELCA

EUROPEAN LANDSCAPE CONTRACTORS ASSOCIATION

COMMUNITY OF MEMBER COMPANIES



Important for feedback on what our position in the lobby is.

Besides, the Committee of Firms is a platform for:

- **Networking;**
- **Skills development in exchange programs and EU-projects on vocational training;**
- **Up to date information and inspiration.**

The Committee of Firms is a growing platform with upcoming:

PROFESSIONAL EXCURSIONS

ELCA PRESIDIUUM & COMMITTEE OF FIRMS EXCURSION



ELCA CoF in Vancouver, Canada

September 17th – 21th 2023



ELCA CoF in Brno, Czech Republic

May 31th – June 2sd 2024





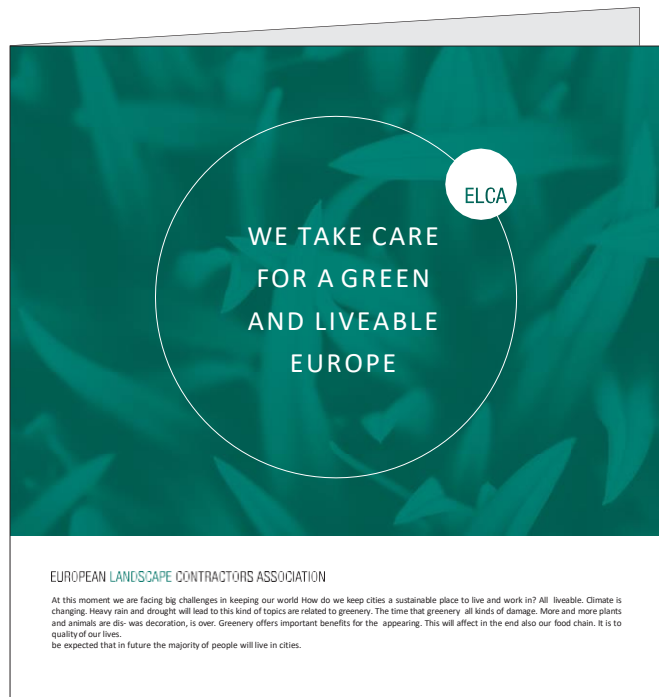
Lobby

Public affairs

ELCA

EUROPEAN LANDSCAPE CONTRACTORS ASSOCIATION

EU COMMUNICATIONS



LEAFLET

“WE TAKE CARE FOR A GREEN AND LIVEABLE EUROPE”

Can we create more green opportunities together? Greenery is part of the answers to the great societal challenges that we face in keeping our world liveable. We want to speed up while time is running.

ELCA MESSAGE TO THE EUROPEAN COMMISSION

Letter by ELCA-President Henrik Bos to Frans Timmermans. Our companies provide nature- based solutions with living green. ELCA and its member associations can offer knowledge and experience to the EU.



EU Green Deal:



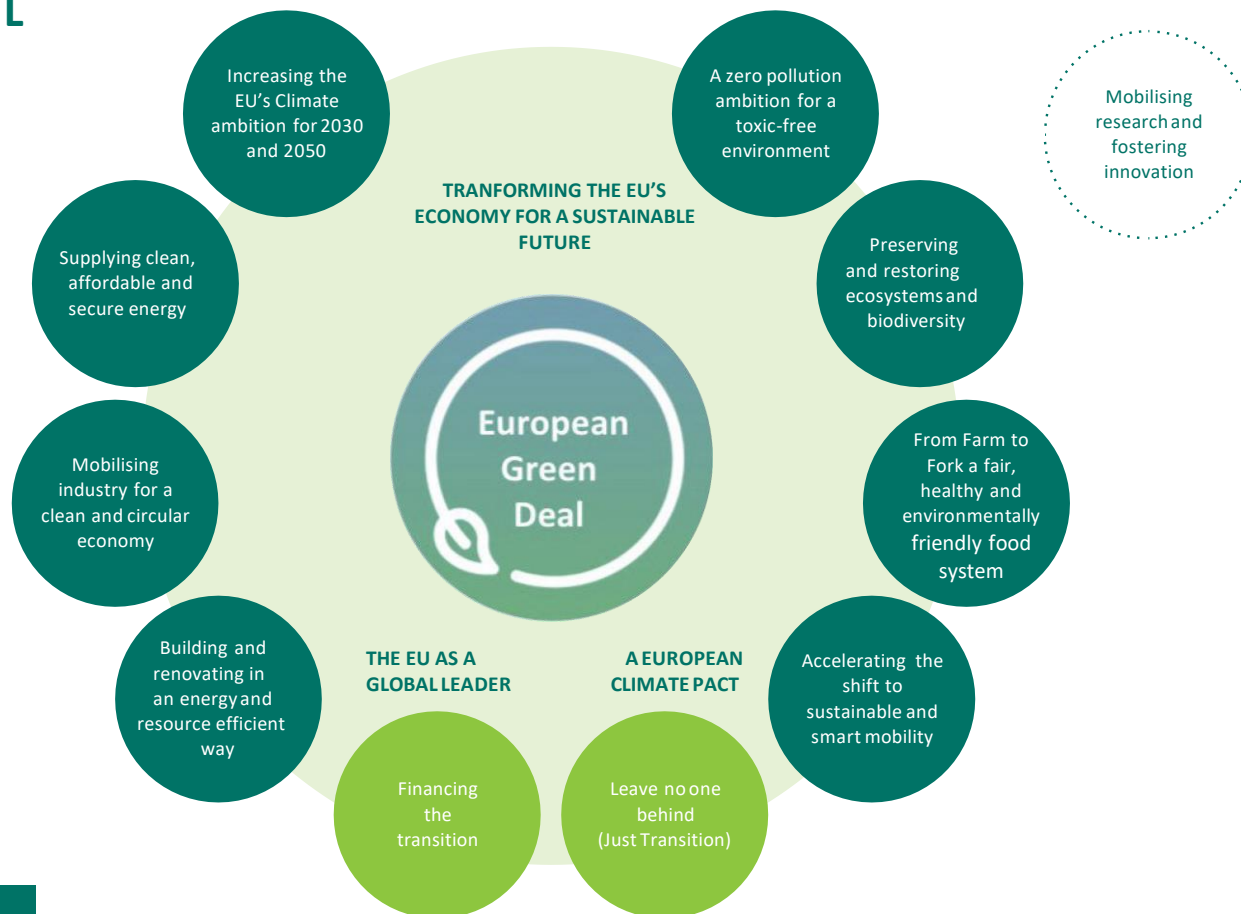
ELCA

The Green Deal is launched by the European Commission in 2019, because:

“Climate change and destruction environment are harming the future of Europe and the world”

- We must ensure prosperity and health of our European citizens;
- We need clean air, clean water, fertile soil and biodiversity to guarantee prosperity and health;
- We use, amongst others, greenery and nature-based solutions to achieve this goal.

EU GREEN DEAL



Our chances: Think green first!



ELCA

Alignment with the core values of our green sector:

- Green benefits for climate adaptation/mitigation (reduction damage of heavy rainfall and drought);
- Green benefits for biodiversity;
- Green benefits for health and well-being (heat stress prevention, clean air, noise absorption).

EU Green Deal:



ELCA

Launched initiatives, work in progress:

- Climate Law for reduction and absorption of CO₂;
- Renovation Wave for energy efficient buildings;
- EU Taxonomy for green investments;
- Skills Agenda for green skills development;
- Nature Restoration Law for biodiversity protection.

Nature Restoration Law:



ELCA

Launched by European Commission in June 2022:

- Aim is to protect and enhance biodiversity;
- Seas, forests, peatlands, agricultural areas, cities;
- Measures by regulation, which means mandatory;
- Large and diverse group of stakeholders.

Our appreciation:

This offers great opportunities for greening cities!

Nature Restoration Law:



ELCA

Initial text: 'there must be a no net loss of green urban spaces by 2030 and a growth of green spaces with 5 % and tree canopy with 10% by 2050.'

- Unfortunately, a lot of opposition and chaos;
- Council of the EU came with a compromise: no mandatory result but obligation of means till satisfactory level is reached;
- European Parliament could not reach common point of view, plenary vote determined its position in favour of the law.

Behind the screens:



ELCA

Our lobby together with the SoGreen Alliance:

- **Position paper with appreciation and suggestions;**
- **Seeking support for our message;**
- **Contacts with European Commission, MEP's and Committee of the Regions;**
- **Press releases of our actions to align;**
- **Monitor and act (mail to Frans Timmermans).**

Actual status:



ELCA

Triologue starts between European Parliament, Council of the EU and European Commission about the final text of the law.

We have sent letters to EU-Commissioners, rapporteur in the EU-Parliament and the President of the Council of the EU.

Our message: Think green first!:



ELCA

- Define: what is a satisfactory level?;
- There must be more attention in general for the green solutions that we offer in the urban area (European Green Week);
- There must be a standard approach in which green solutions are already at the beginning of the policy/design process on the table;
- The green professional must be involved early in the process to present green solutions and points of attention during creation and maintenance.

ELCA takes the lead, because:



ELCA

- The EU Green Deal offers a clear perspective for the green sector for its own future development. We must align proactively;
- The green sector is part of the solution in societal challenges. ELCA, together with other urban green professionals within the SoGreen Alliance, promotes the sector and connects.



Thank you
for your attention!

Think green
first!