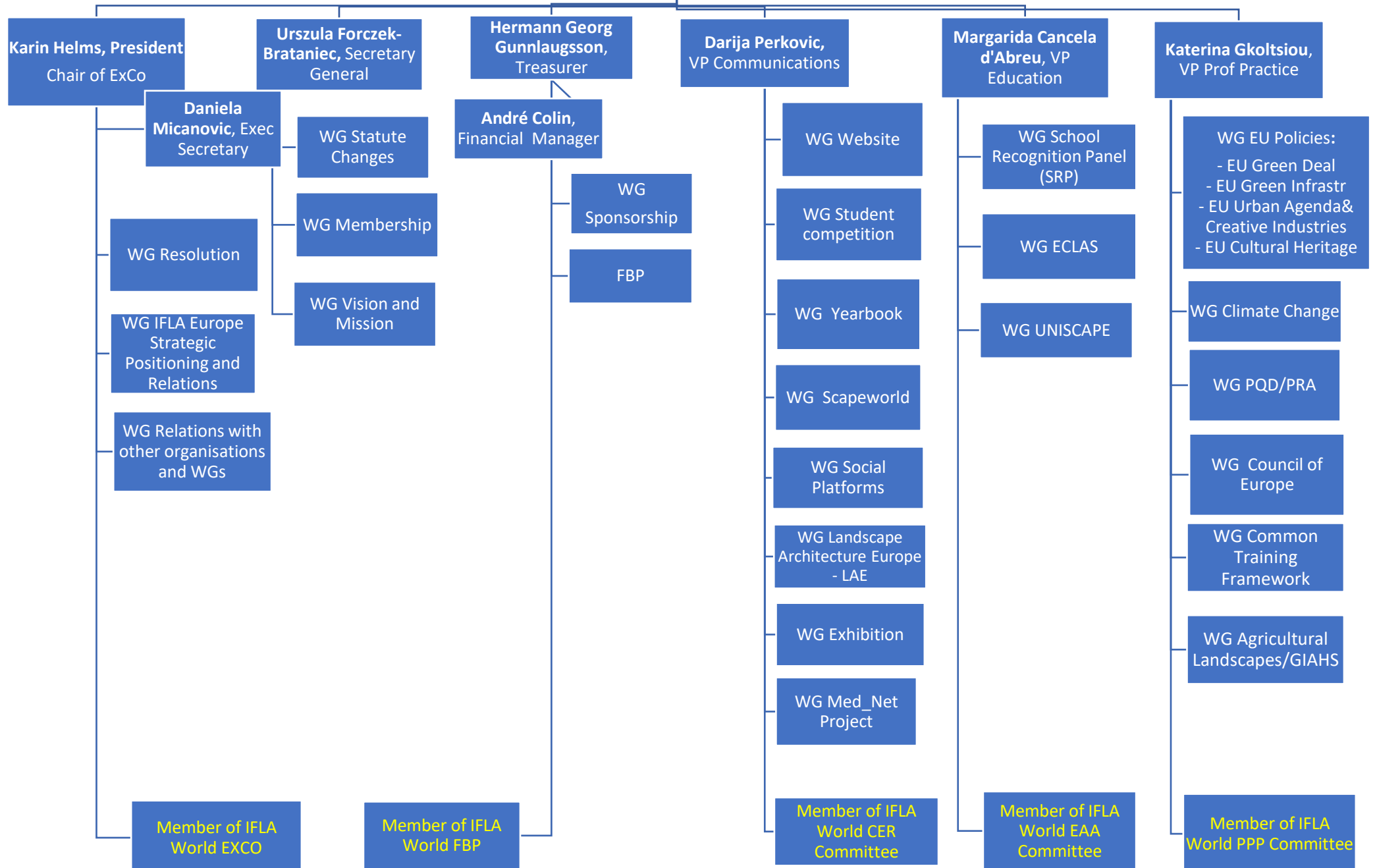
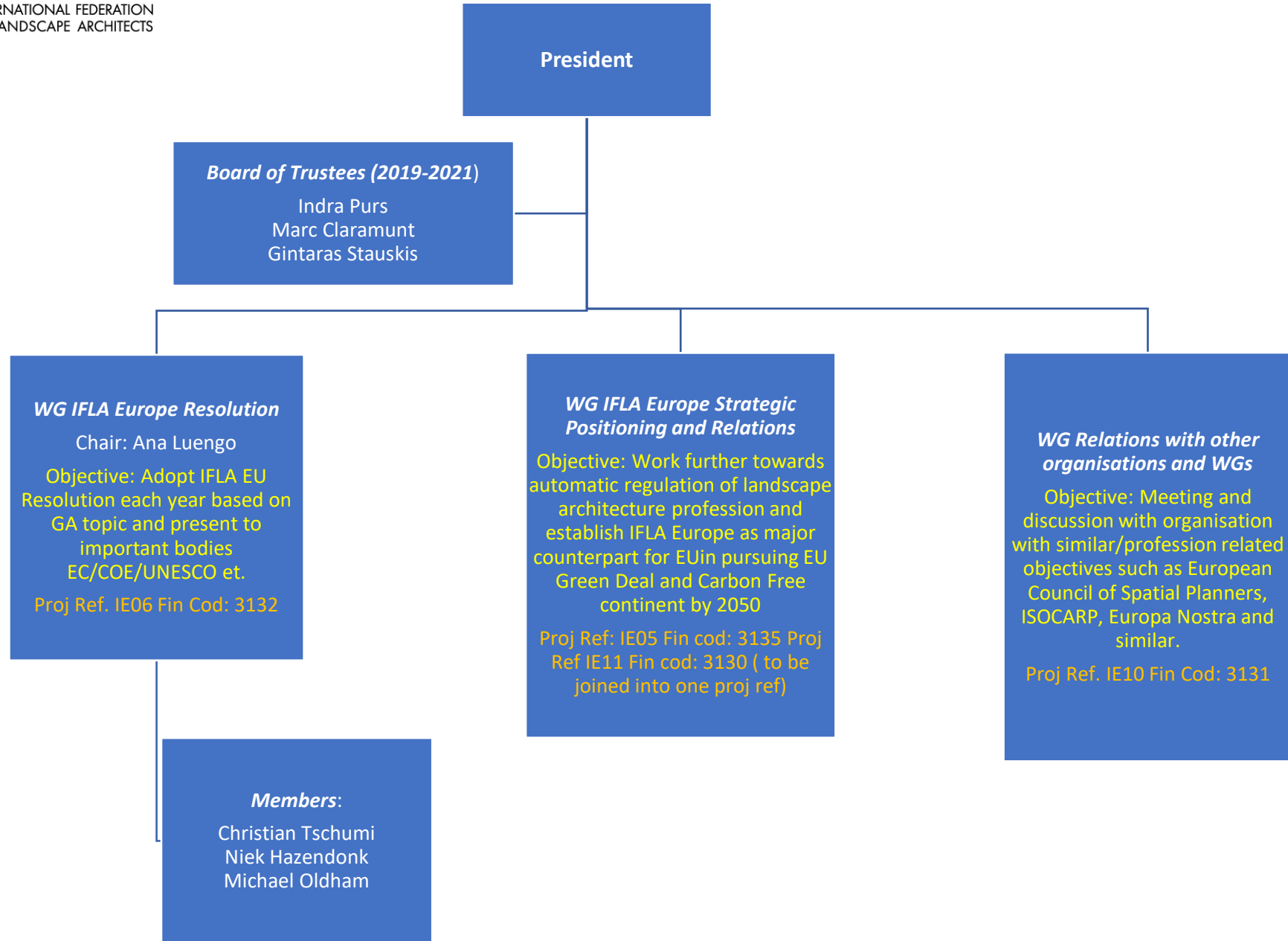
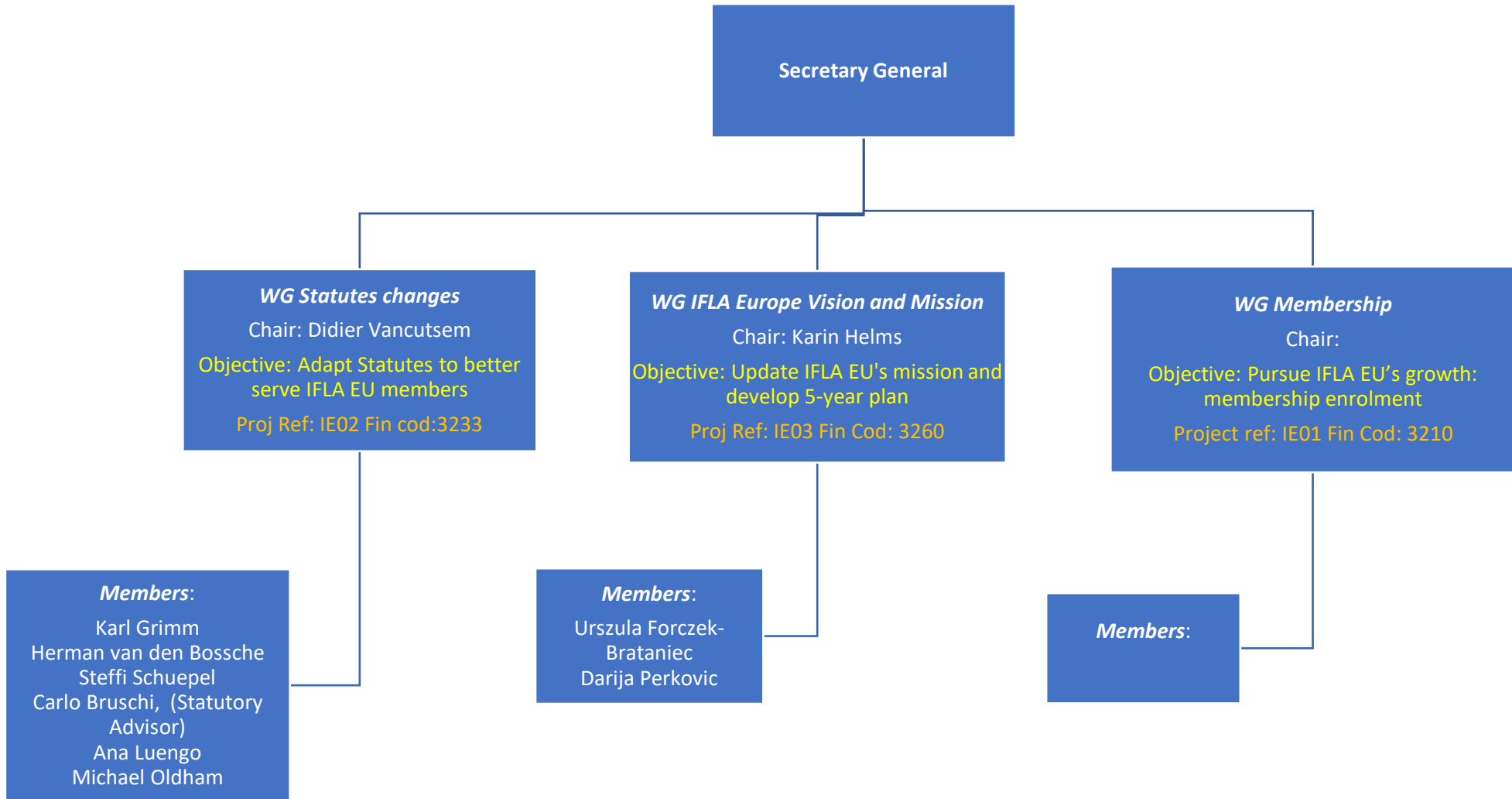
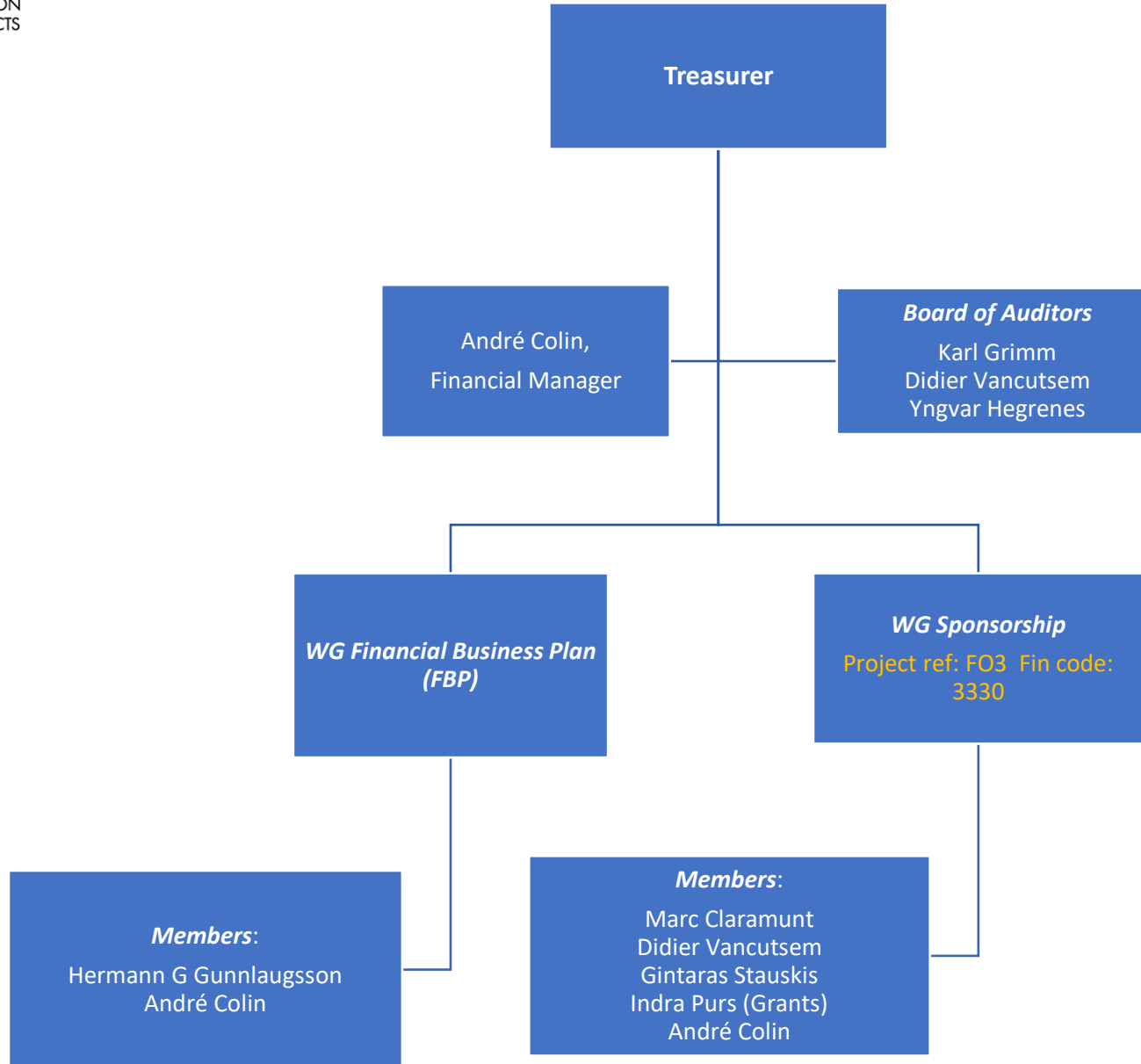


**IFLA EUROPE Executive
Council
2019-2021**



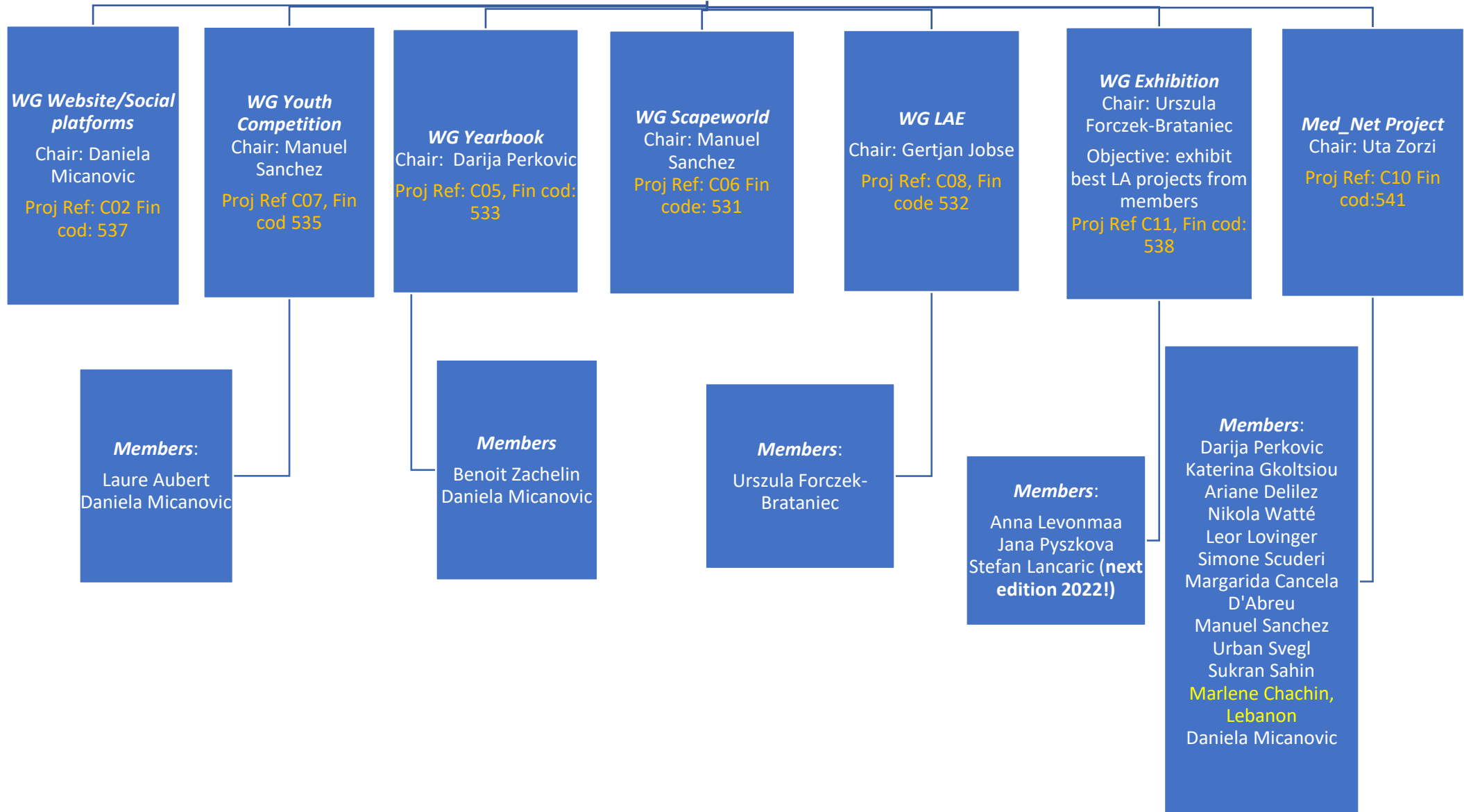






VP Communication Committee

Objective: Raise awareness about IFLA Europe, LA profession, role of landscape architects in fighting climate challenges with Nature Based Solutions



VP Education Committee

Objective: ensure solid Landscape Architecture Education around Europe, for effective professional practice; Permanent updated information on European Landscape Architecture programmes, for student's movement and professional recognition; Co-operation between academic and professional organisations, promoting landscape valorisation

WG School Recognition Panel SRP

Chair: Margarida Cancela d'Abreu

Proj Ref: E01 Fin cod: 511

Members:

Karin Helms
 Ana Luengo
 Andreja Tutundzic
 Emilia Weckman
 HermannG
 Gunnlaugsson
 Ioana Tudora
 Marc Claramunt
 Marina Cervera
 Teele Nigola
 Sophia Meeres, ECLAS

WG ECLAS

Chair: Ioana Tudora

Proj Ref: E03 Fin cod: 513

Members

Paula Simões
 Ellen Fetzer, ECLAS
 Sophia Meeres, ECLAS

WG UNISCAPE

Chair: Margarida Cancela d'Abreu

Proj Ref: E04 Fin cod: 514

Members:

TBC. Innoland Project

Chair: Fritz Auweck

Members:

Gintaras Stauskis
 Marina Cervera
 André Colin, Fin Man
 Daniela Micanovic

VP Prof Practice Committee

Objective: work towards the professional recognition and accreditation of Landscape Architecture; promote professional development and ensure landscape architects deliver the highest standards of practice; enhance the free movement of professionals among the European countries and to certify that they deliver the high standards of professional qualification.

