
FRA ENEBOLIG TIL BYBOLIG – ER BYPARKEN MIN NYE HAGE?

Thomas Landenberg

#whitearkitekter
@whitearkitekter

white

The tetrad questions;

What does it extend?

What does it make obsolete?

What new opportunities does it create?

What does it reverse into when overextended?

(Marshall McLuhan)



Gärdet 1930 – här kan man bo ett helt liv utan att träffa sina grannar



Baronbackarna 1951 - "Du får leka på våran gård"



MOBILITET
KLIMATNEUTRALITET
DIGITALISERING
DELNINGSEKONOMI
FÖRTÄTNING

“VALD GEMENSKAP”



Frölunda



Kvarteret Skolmössan - befaring



Kvarteret Skolmössan - befaring



Kvarteret Skolmössan - befaring



privat trädgård



radhus



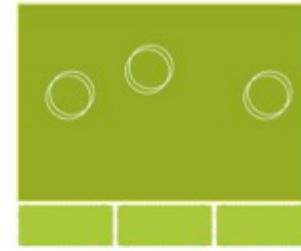
förträdgård



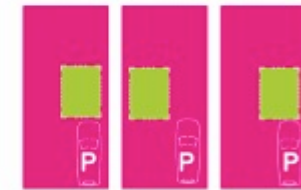
gata



allmän äppelträdgård



privat trädgård

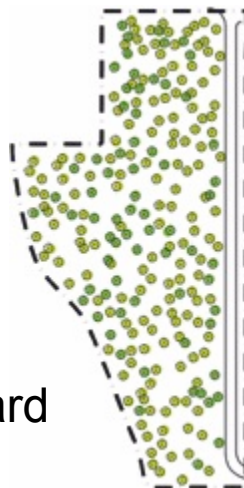


atriumradhus



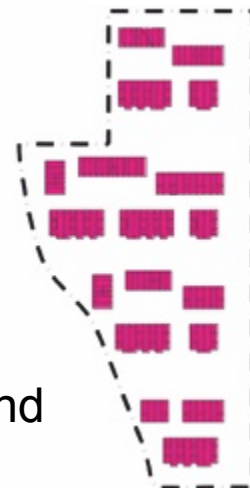
gränd

äppelträdgård



+

gränd

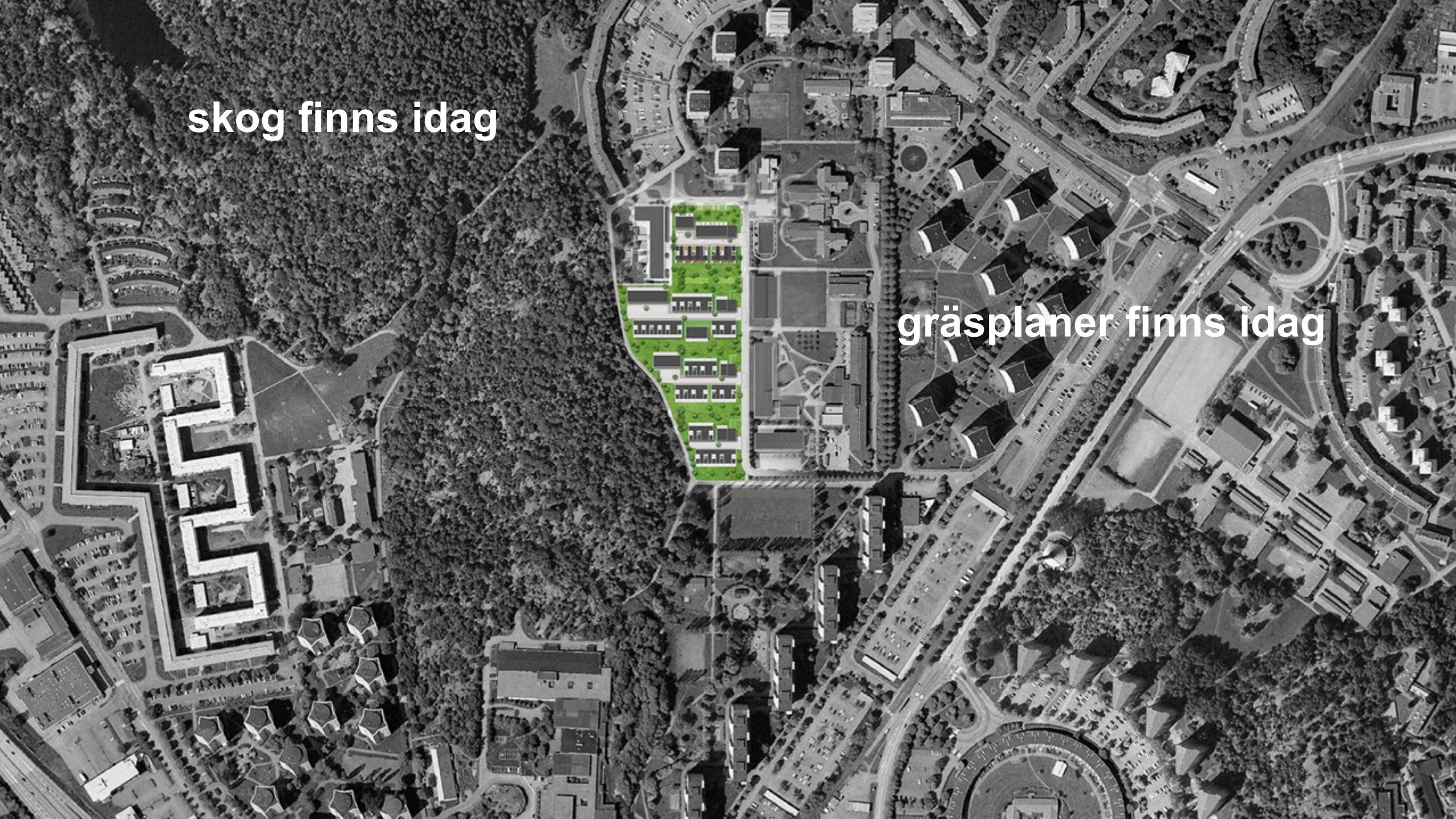


=

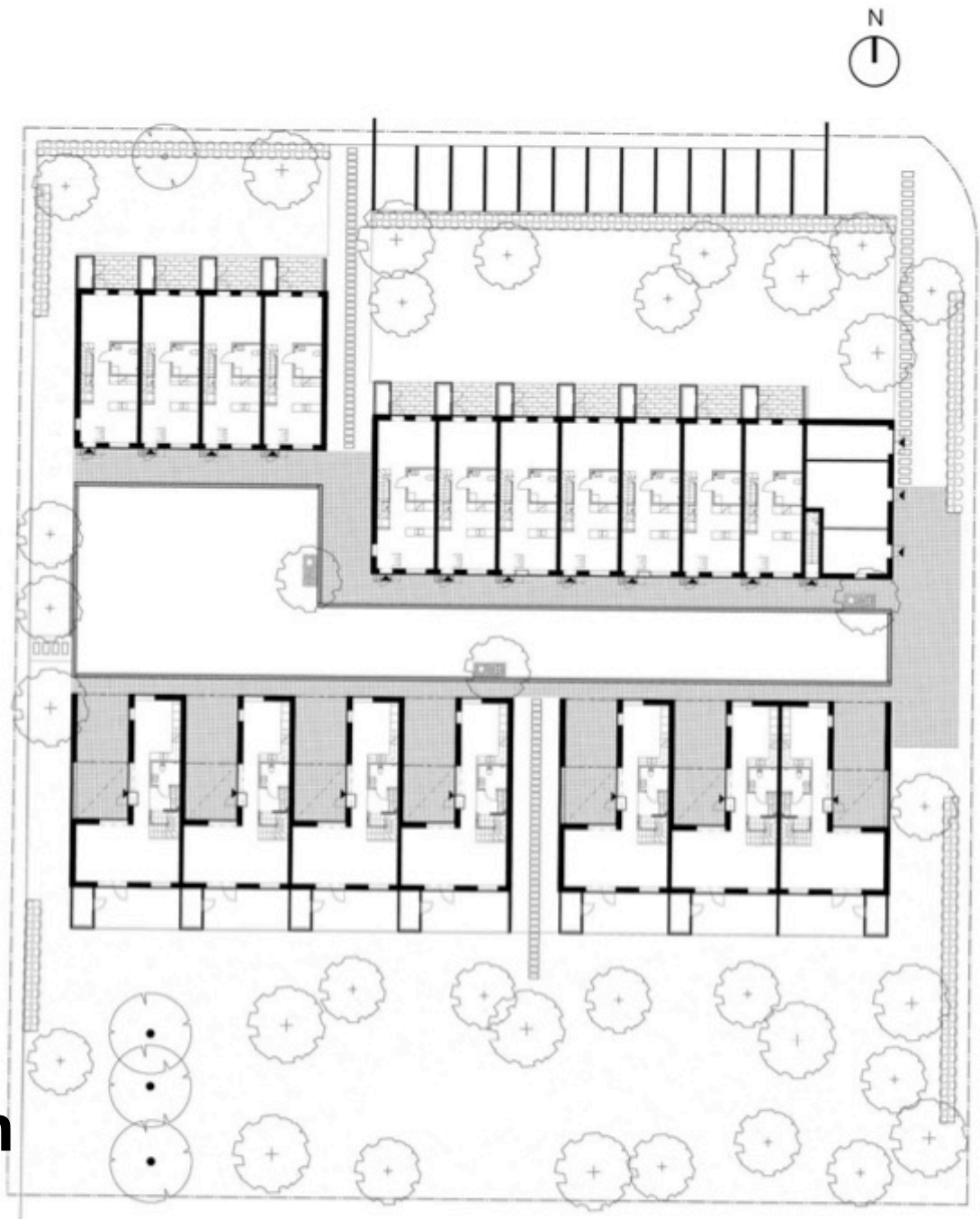


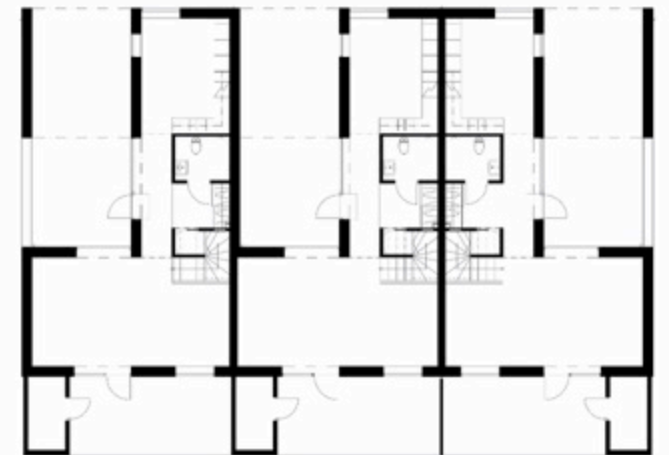
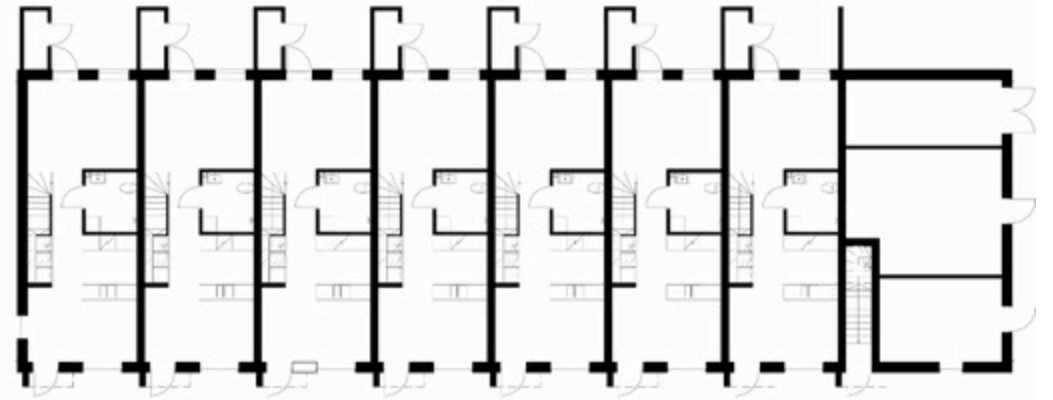
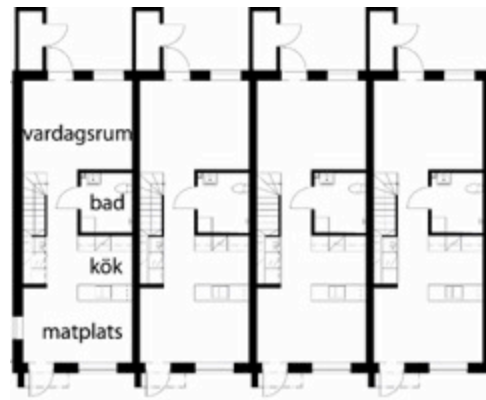
skog finns idag

gräsplaner finns idag

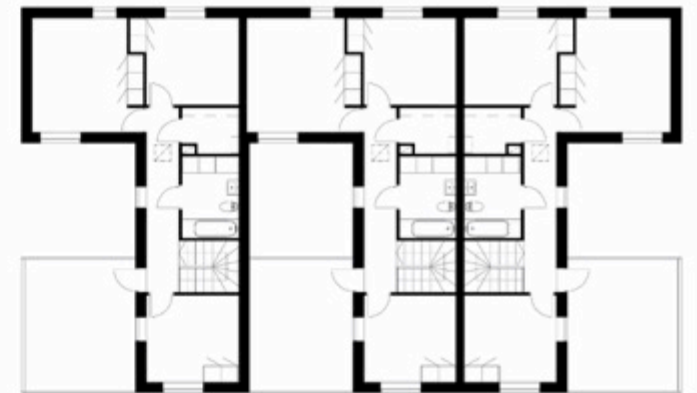
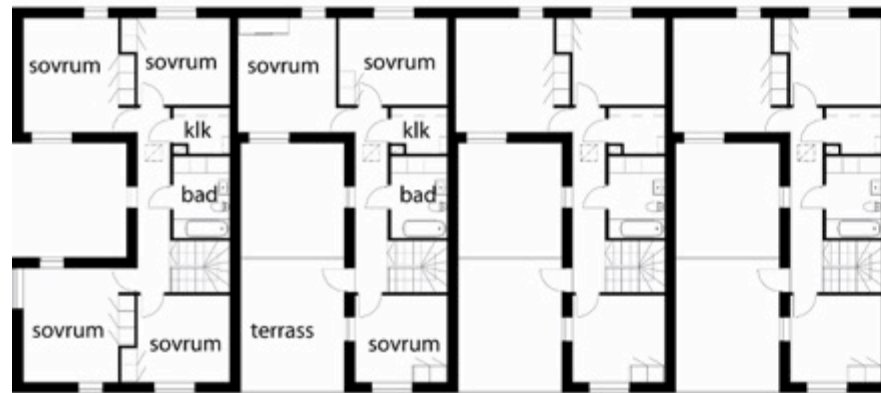
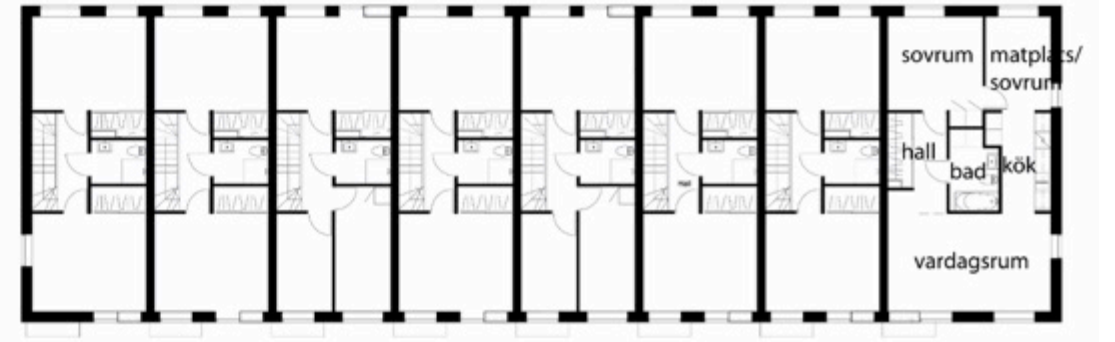
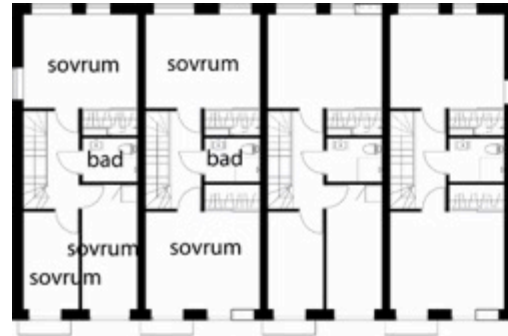


Situationsplan





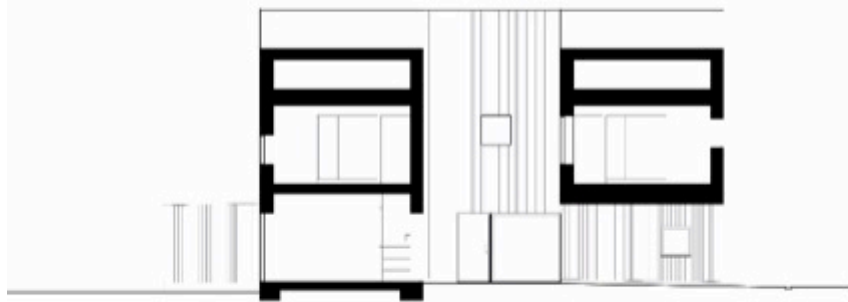
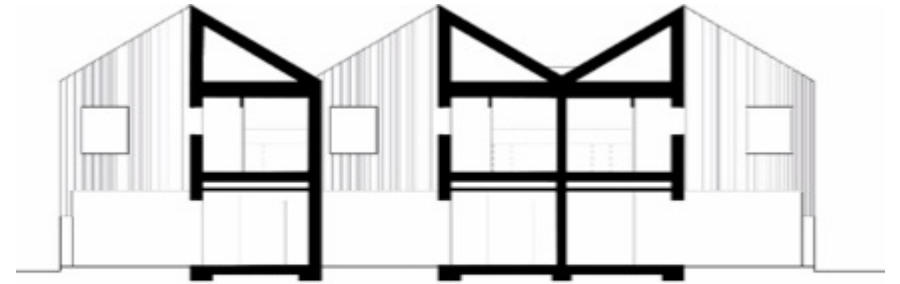
Plan 1



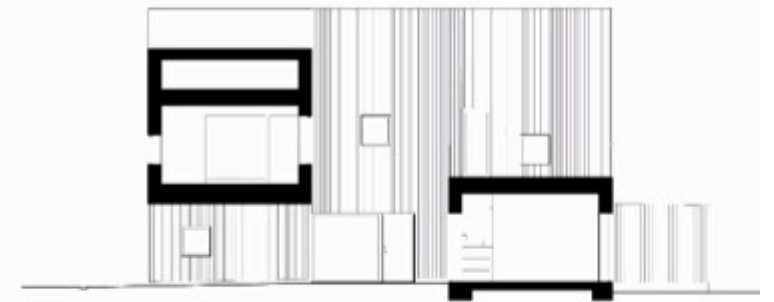
Plan 2



Sektion B-B

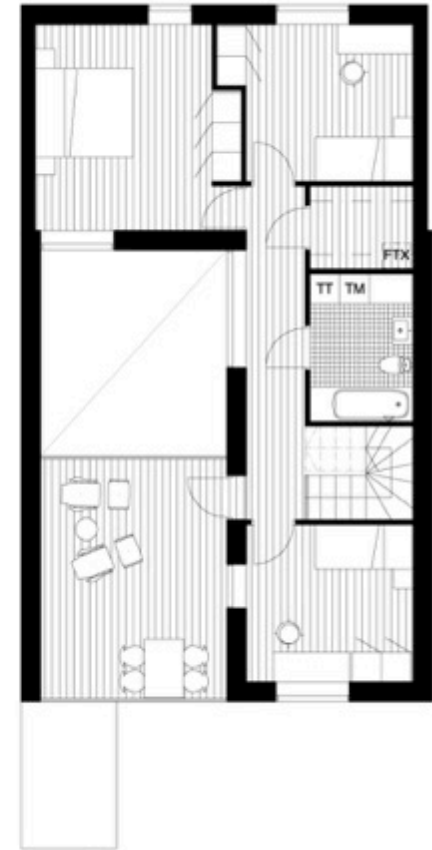
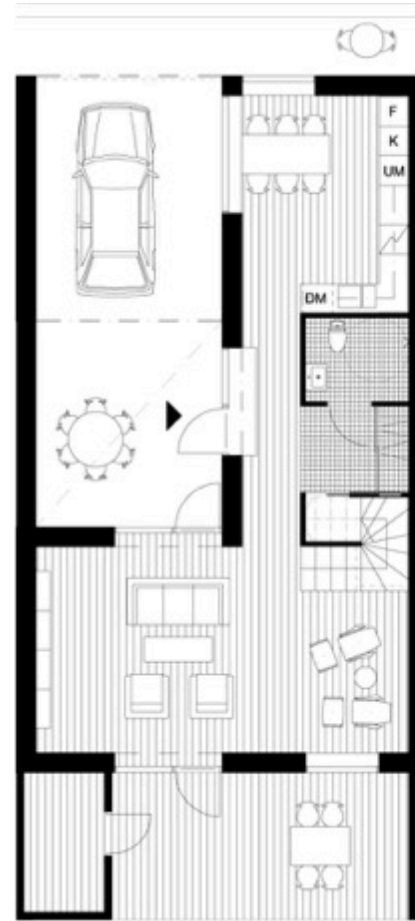


Sektion E-E



Sektion D-D

Sktioner



Möblerade planer atriumradhusen



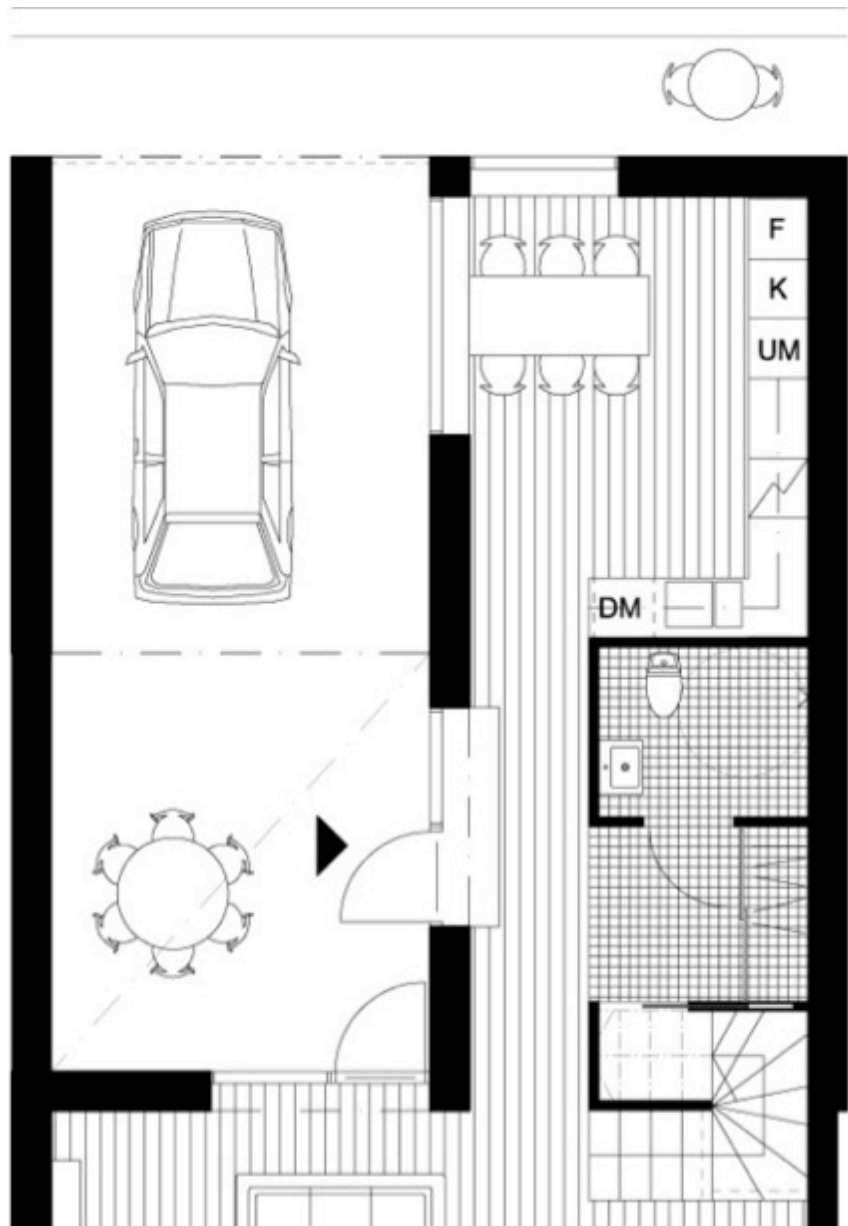


















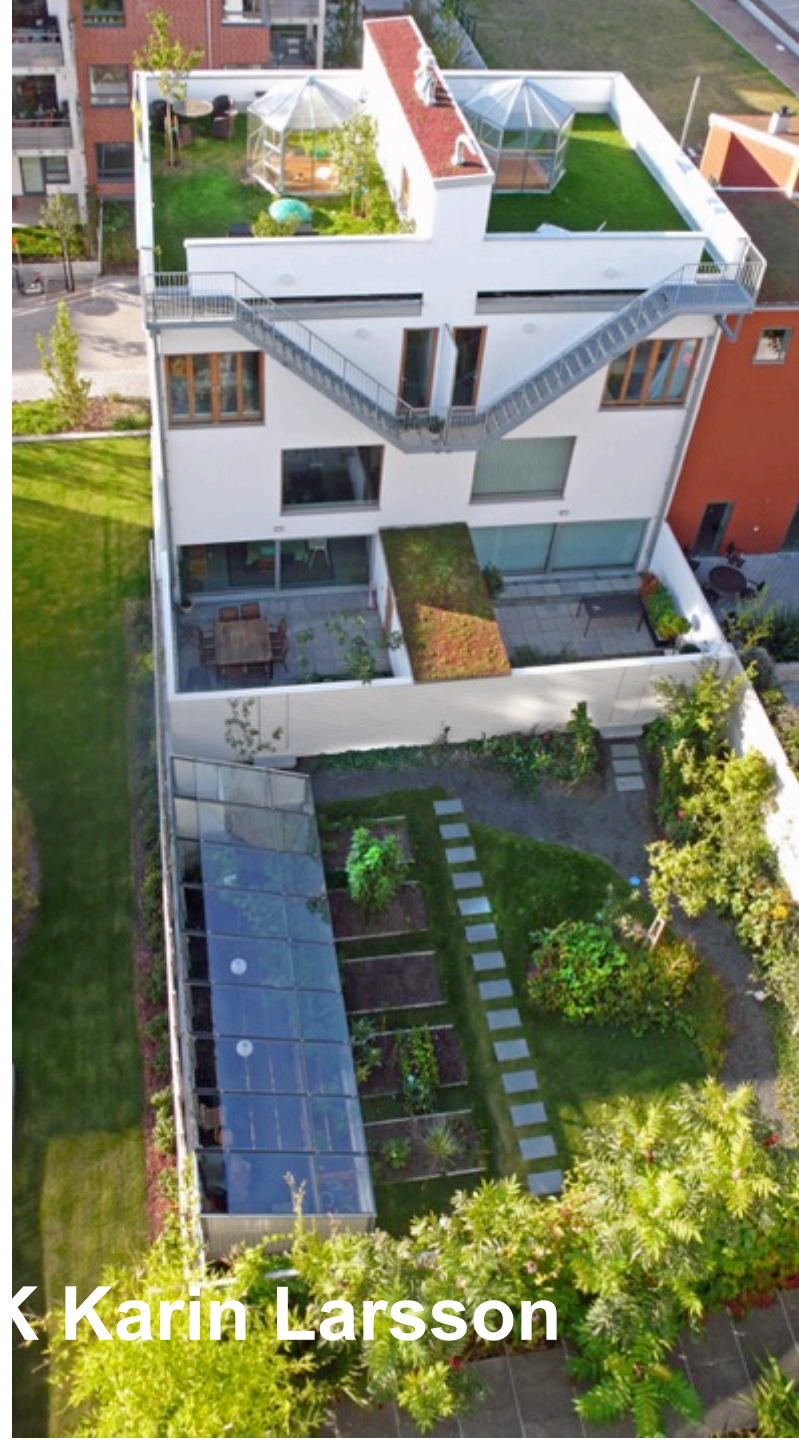




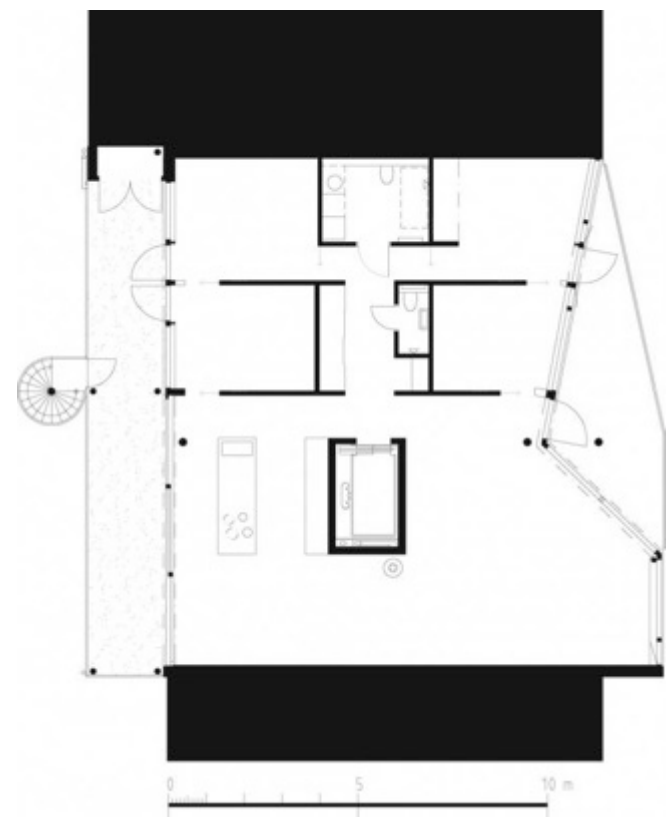
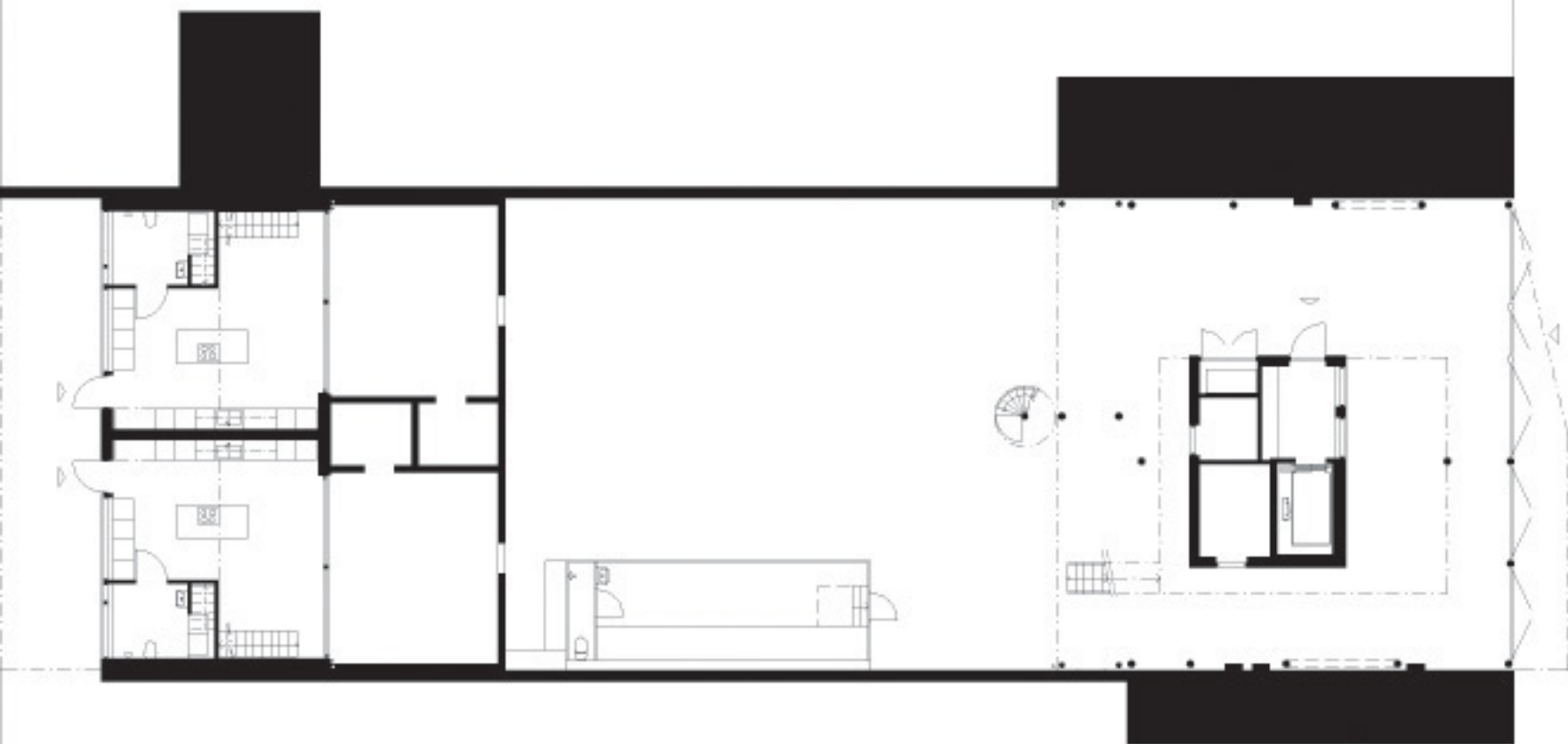




“BYGGGEMENSKAP”



Urbana villor Malmö 2008
– ARK Cord Siegel och Pontus Åqvist, LARK Karin Larsson



Gatuplan och våningsplan













BOSTAD-LANDSKAP RUMSSEKVENSER