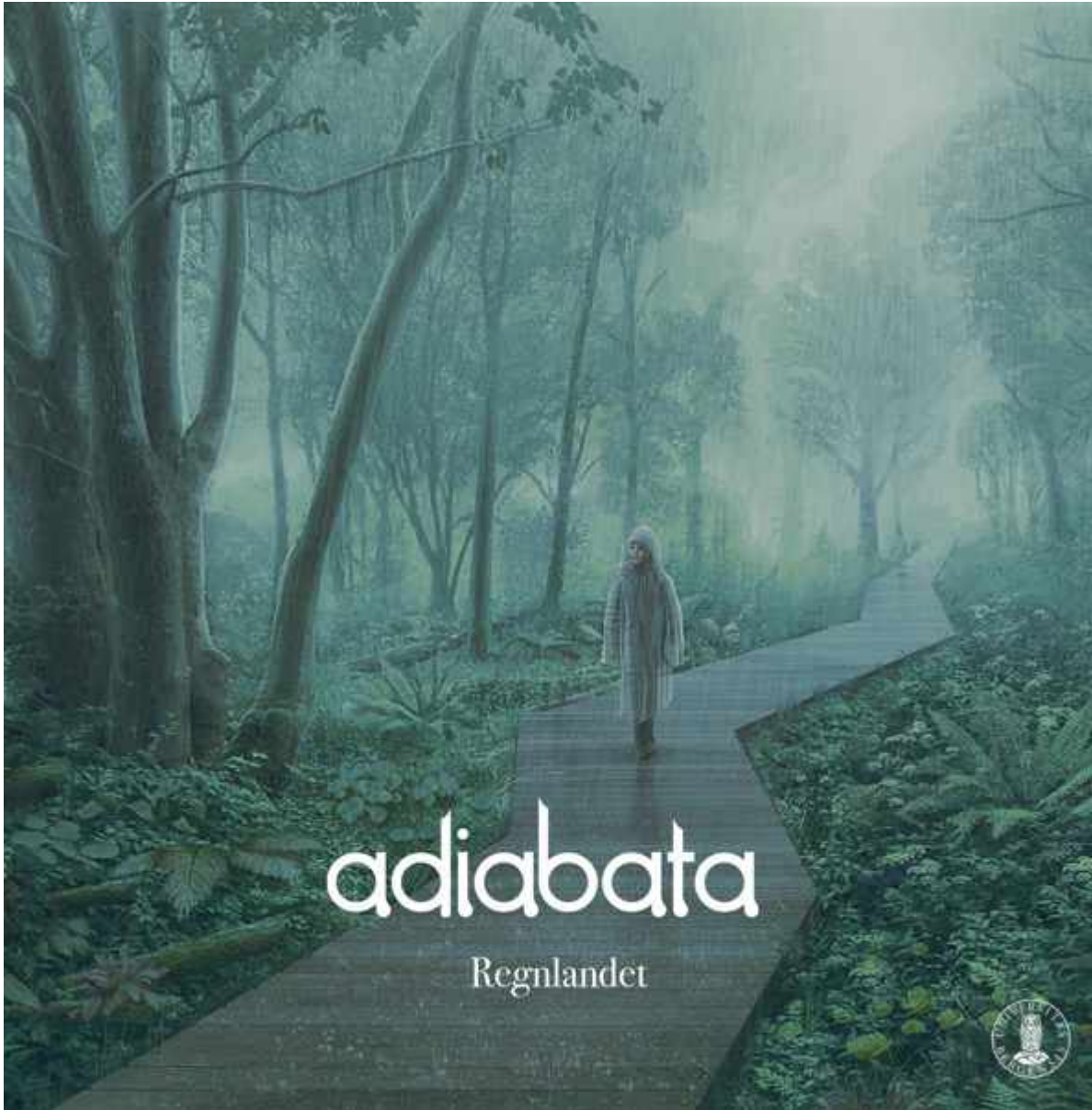
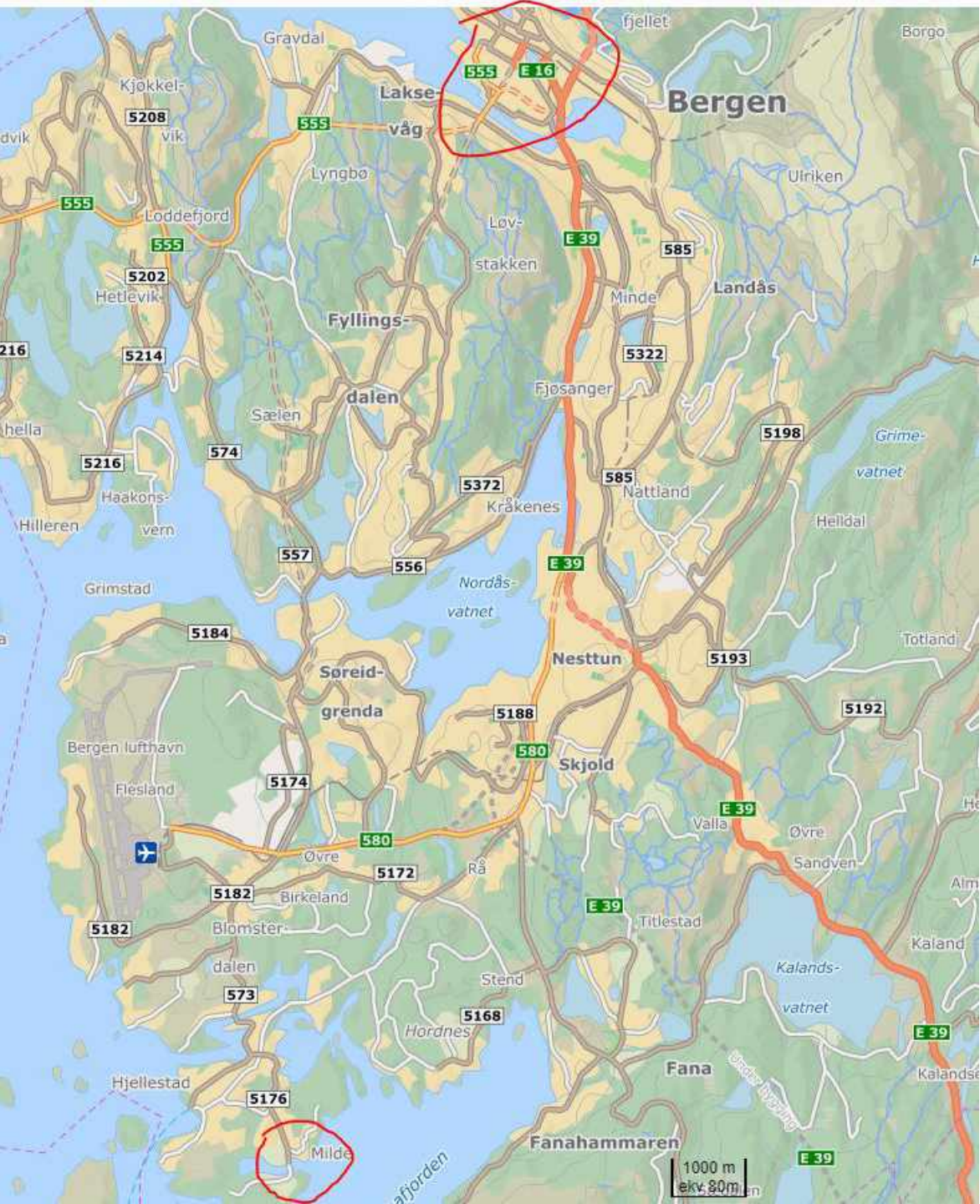




Adiabata botanisk hage

Anne Irgens,
Norconsult







HAGE

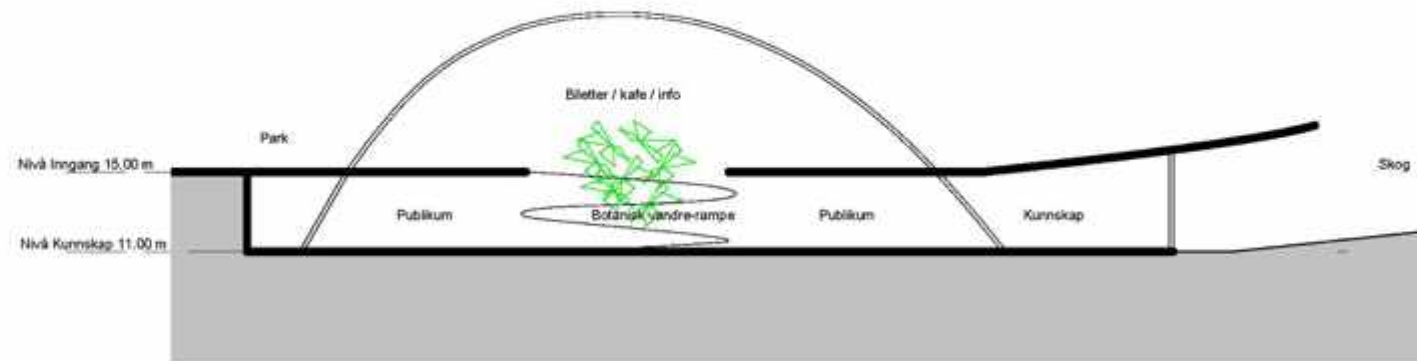
UNIVERSITETET

KE HAGE

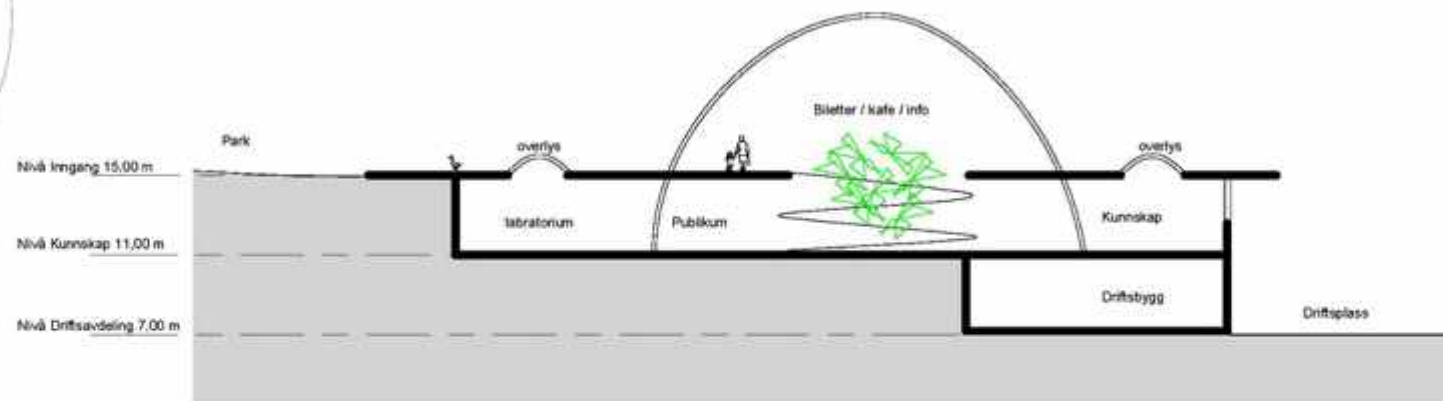




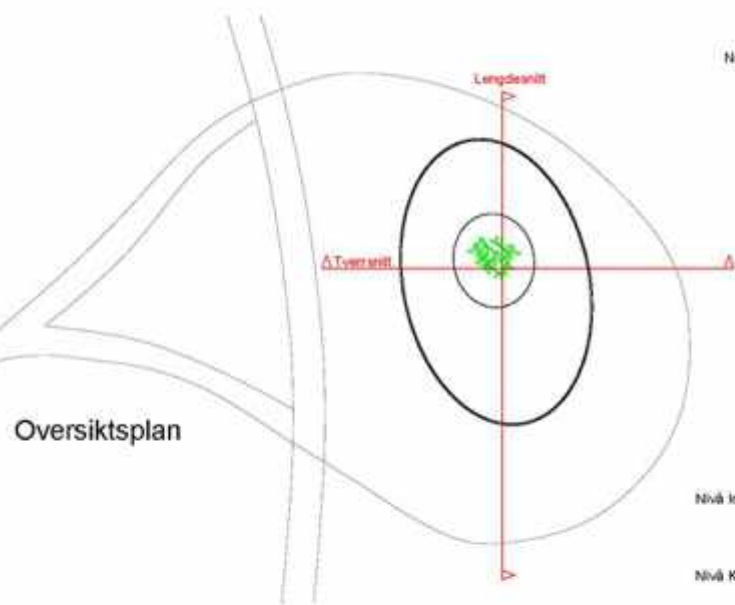
Prinsippskisser Kunnskapsenter



Lengdesnitt



Tverrsnitt



Oversiktsplan

Arealer		
etasje	navn	areal
PLAN 02. ETG	Kafe-Info	562 m ²
PLAN 01. ETG	Kunnskapsavdeling	1498 m ²
PLAN U1. ETG	Driftsavdeling	459 m ²
		2519 m ²



Kunnskapscenter
Forskning og
undervisningsbygg



Eksempel fra Malmø



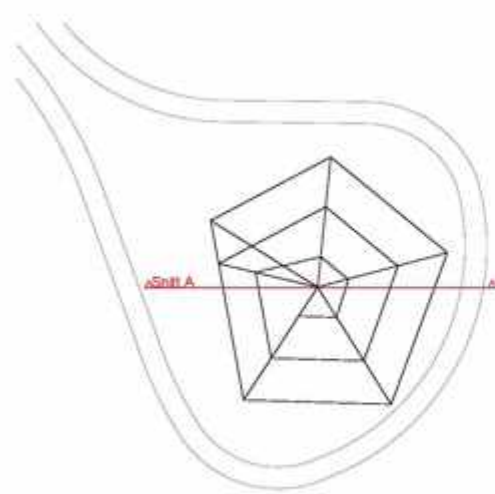




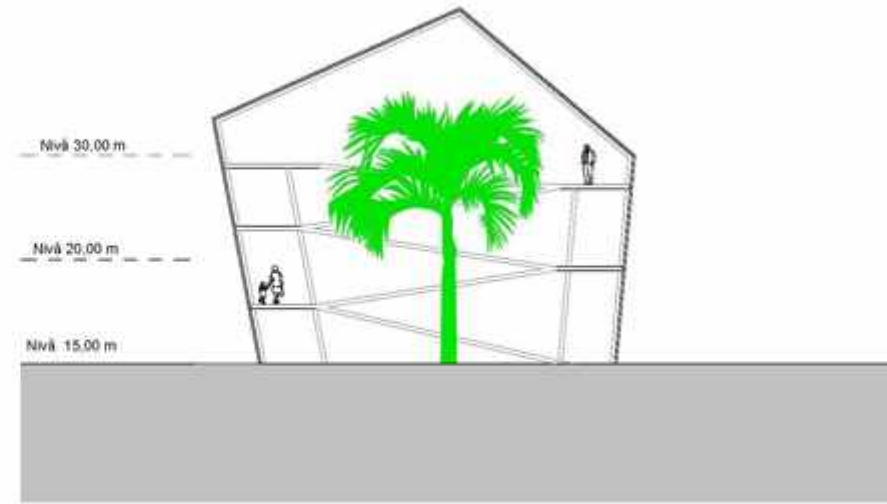




Tropehage



Oversiktsplan Drivhus



Snitt A





- Systematiske hager
- Visningshage
- Undervisningshage
- Nyttehage
- Sansehage
- Insektsvennlig hage
- Fremmedart hage
- Prydhage
- Årets hage
- Klimahage
- Fjellhagen
- Vannhagen
- Den hypermoderne hagen
- Lekehage
- Frukthage
- Japanhage
- Bærekrafthage
- Parkeringshagen



Fjellhagen





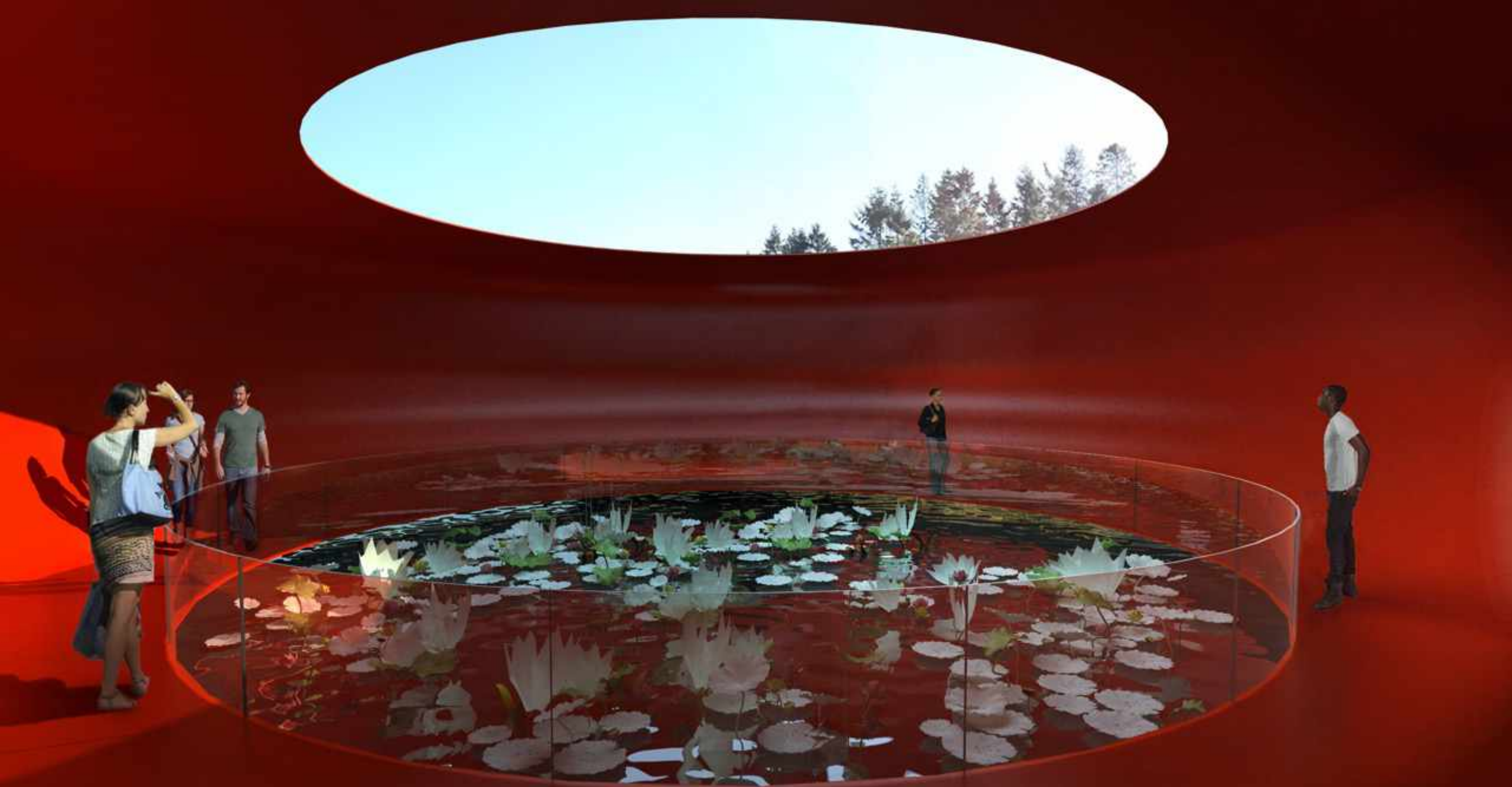




Kunstner Finn Eirik Modahl



Kunstner Finn Eirik Modahl



Kunstner Finn Eirik Modahl

Japan hagen



Skygge av trær kveld juni-august?
Utsikt til sjøen/solnedgang?
Drivhus synlig?
Romdefinisjon/åpenhet/lesbarhet?
Trær i forbindelsen mot amfi-designhagen?

8

9.
Amfi fungerende?
forbindelse mot designhagen - utforming?
God gradient mot oreskogen?
Drivhus synlighet?

7

Overgang til kulturlandskapet?
Innbydende sti?

6

Er sjøen/skulptur synlig?
Er stier innbydende?
for mange visuelle fokuspunkt?
God romdefinisjon?
Scene?

5

Tydelig romdefinisjon?
"portaler" mot andre rom?
Utsikt til vann/skulptur?
Er stier innbydende?
Drivhus for stort?

3

Trekronesti - trær i forgrunn?
Verdt utsikten?

2

Utsikt til kulturlandskap/innsjøen
Forbindelse mellom øvre/nedre del
Siktlinje parkering

4

Skog densitet
parkaktig vs naturlig
Sti innbydende?

1

Romdefinisjon/åpenhet
Orientasjon/parkering
Siktlinje til sjøen/bak bygg

10

Inngang labyrint godt synlig?
Forbindelse mot bot. hage?

Samtlige:
Noe som ser uventet ut?
Nye problemstillinger oppdaget?



VR-Briller gir god stemning

Adiabata the rain garden

Bergen is located on the west coast of Norway, with high precipitation. The botanical garden is possibly the most rainy botanical garden in the world. The impact rain has on nature and people will be the main theme of the garden exhibitions, emphasizing the vitality of rain life and society.

Vision

Our vision is a garden about producing, communicating and retaining plant knowledge for a future in balance. Knowledge that changes society and people's everyday lives.

Learning

Adiabata will motivate new generations to gain knowledge and to take responsibility through outdoor learning and exciting experiences.

Involving

To create a shared garden that engages, enlightens and inspires people to appreciate and understand the role of plants in the development of a more sustainable world.

Adiabata

Clouds of small water drops and ice crystals are pushed up the mountains, higher and higher, against impenetrable rocks. Heavy clouds become even heavier, getting colder, then they give up. It's raining.



Biological diversity

We believe the today's most important decision is how we relate to nature. It does not depend on us, but without it we are nothing.

Food

Our vision is a garden about producing, communicating and retaining plant knowledge for a future in balance. Knowledge that changes society and people's everyday lives.

Sustainable living

To create a botanical garden that engages, enlightens and inspires people to appreciate and understand the role of plants in the development of a more sustainable world.

Environment

Our vision is a garden about producing, communicating and retaining plant knowledge for a future in balance. Knowledge that changes society and people's everyday lives.



ACKNOWLEDGMENTS

The text in this template is largely based upon the article "SCIENTIFICALLY SPEAKING - Tips for Preparing and Delivering Scientific Talks and Using Visual Aids" ©2005. Image credit: G. to R. Mr. Smith, Mr. Johnson and Wikimedia Commons.

UNIVERSITETET I BERGEN
WE LOVE RAIN



Fase 1
bygget høst 2018





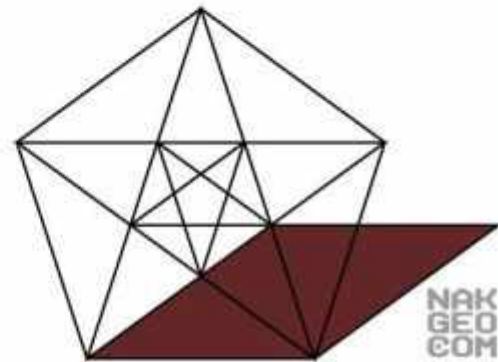
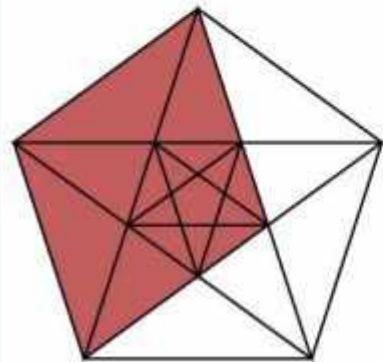
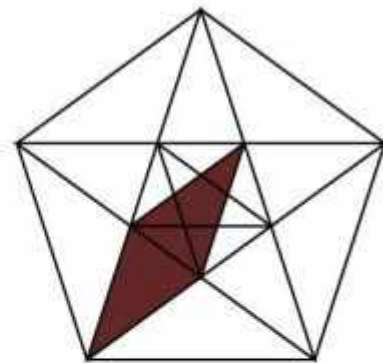
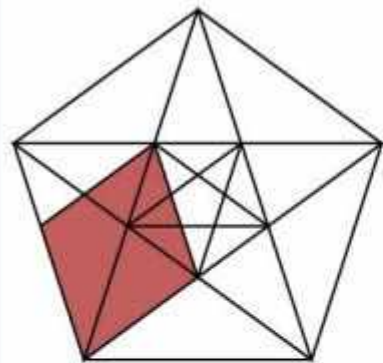


Arkimedes' labyrint på
åpningsdagen

Foto: Christine Nundal



How To Construct the Penrose Tiles





Plantefosiler



Klippete hekker i parkeringshagen



2020

Takk for meg

Landskapsarkitekt
Anne K. Irgens

