



Naturbaseret byutvikling

Louise Fiil Hansen - Partner & Design director, SLA

NLA Fagdag

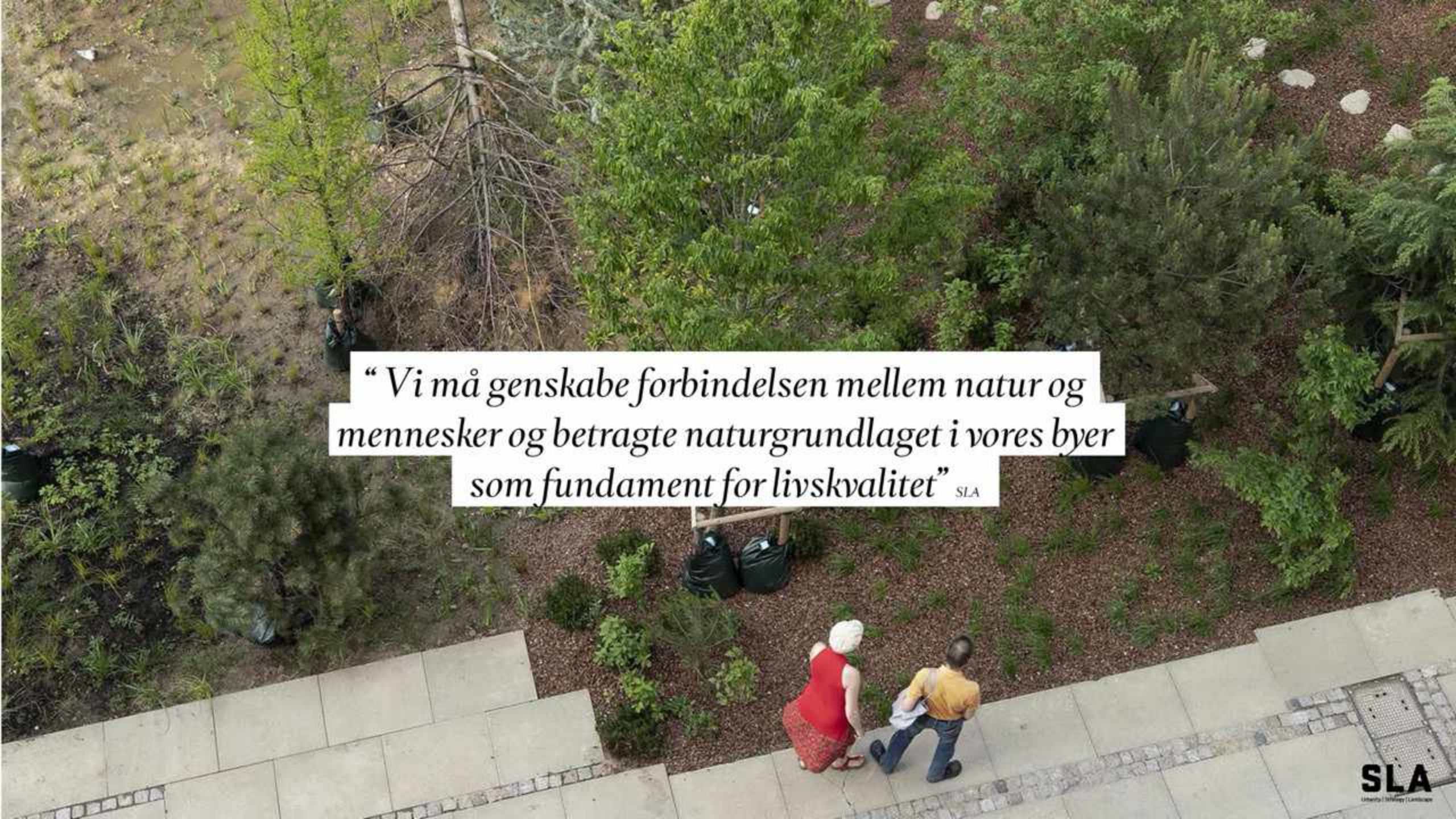
30.10.2020

SLA



SLA

Urbanify | Strategy | Landscape

An aerial photograph of a landscaped area. In the foreground, a paved walkway leads to a garden bed filled with various green plants and trees. A woman in a red dress and a man in a yellow shirt are walking away from the camera. In the background, several trees are visible, including a large, bare tree trunk. The overall scene is lush and green.

“Vi må genskabe forbindelsen mellem natur og mennesker og betragte naturgrundlaget i vores byer som fundament for livskvalitet” SLA



Until today, nature has been separate from the city

A nature-based city Solves urban challenges and creates life quality



Hvorfor naturbasert byutvikling?

Praktisk og æstetisk funksjon

Air Pollution



400.000 people yearly die of air pollution in Europe

(Source: European Court of Auditors)

Extreme Weather Events



Cloud burst event Copenhagen June 2011


Mental Disorders



Mental disorder is an increasing future threat, currently affecting 450 million people globally

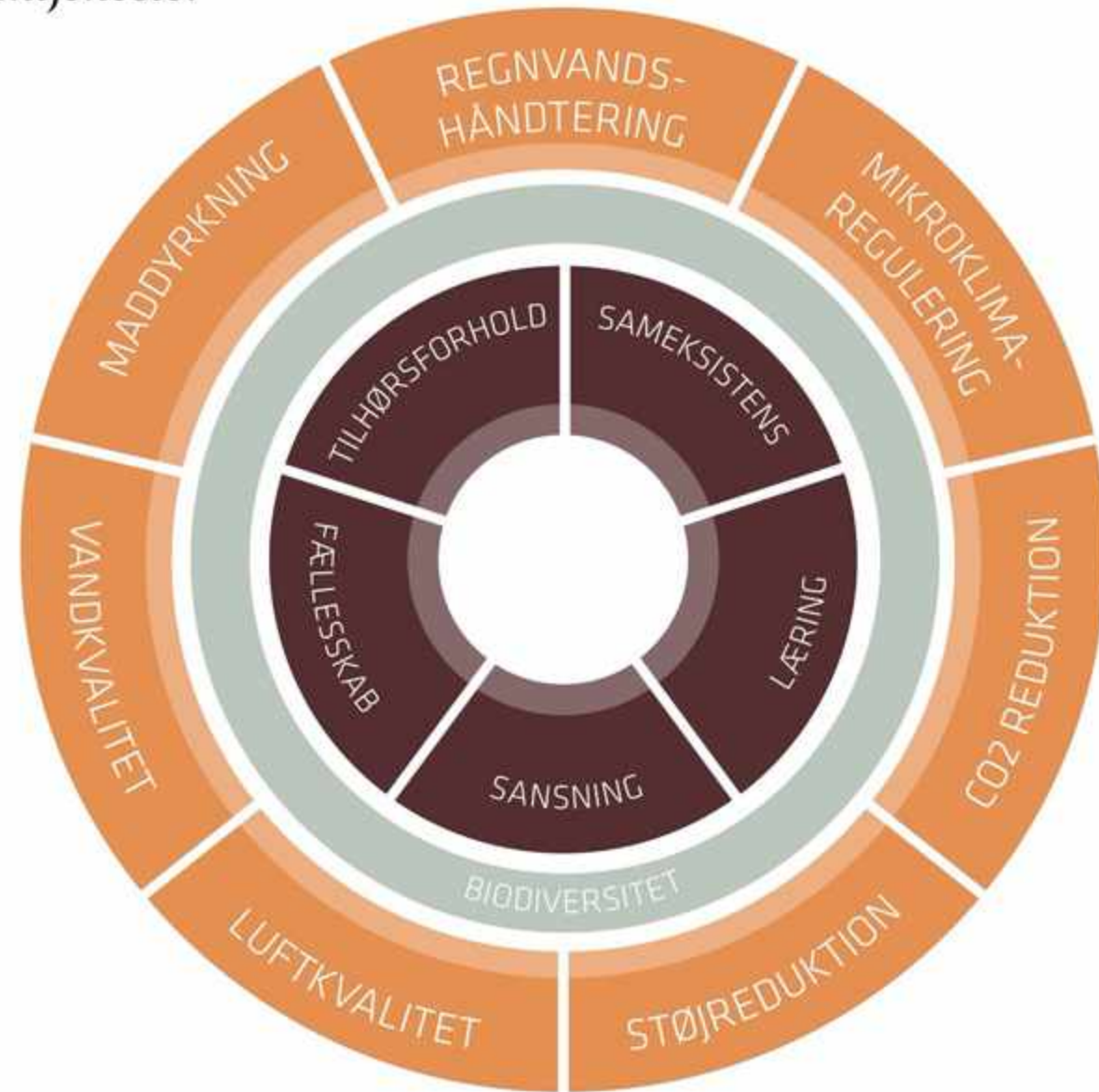
Danish scientists have studied 1 million children, and concluded that growing up surrounded by nature reduces the risk of mental disorders by 55% .

(Source: WHO and Bioscience Aarhus University, 2019)

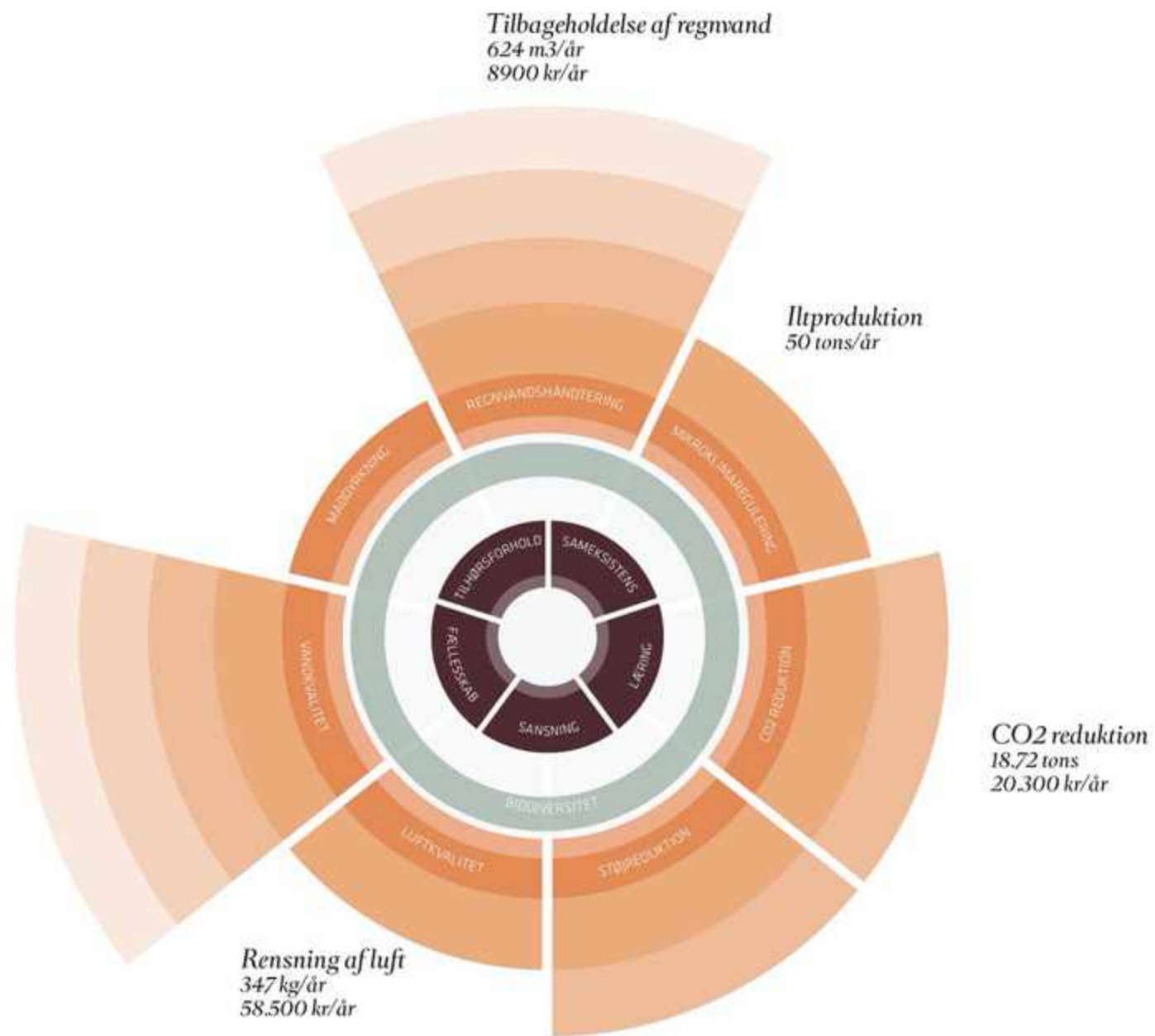
An aerial photograph of a modern urban development. The image shows a central area with circular roads and green spaces. The roads are paved and have white markings. The green spaces are filled with trees and grass. There are several buildings with red and grey roofs. The overall design is circular and organic, with roads and paths curving around green areas. The text is overlaid on the central part of the image.

“En by med en stærk bynatur er en mere velfungerende, mere leveværdig og en mere tilpasningsdygtig by” SLA

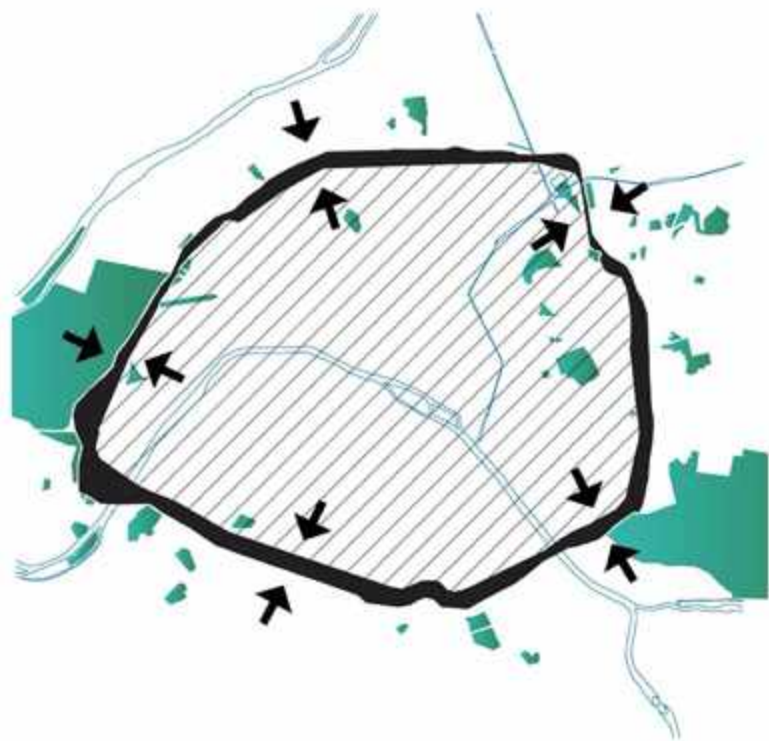
Bynatur og værdiskabelse gennem økosystemtjenester



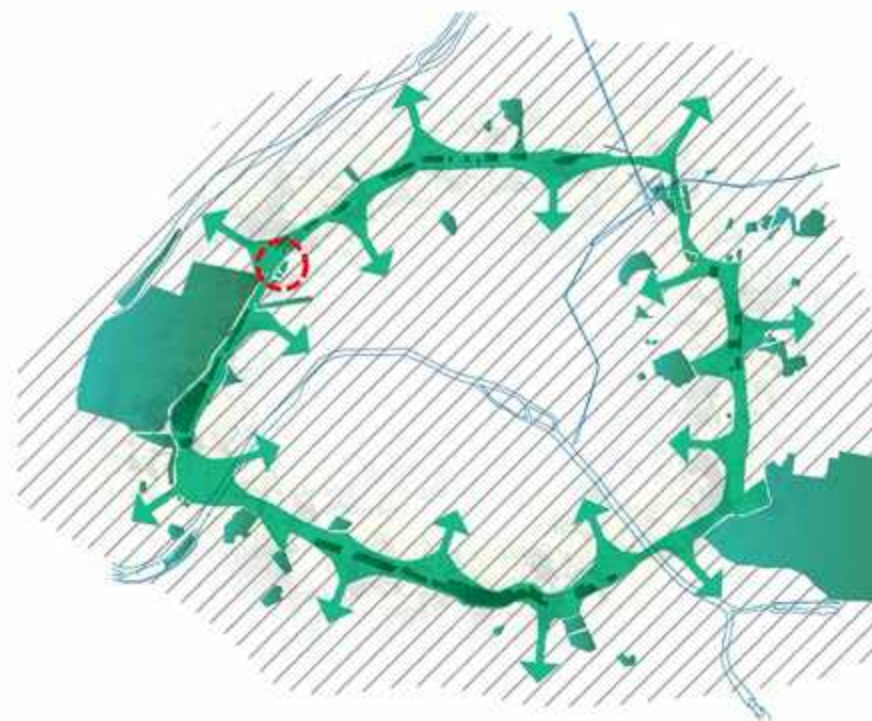
Målbare økosystemtjenester som værktøj



En ny praksis hvor by, bygninger, infrastruktur og natur sameksisterer



TODAY

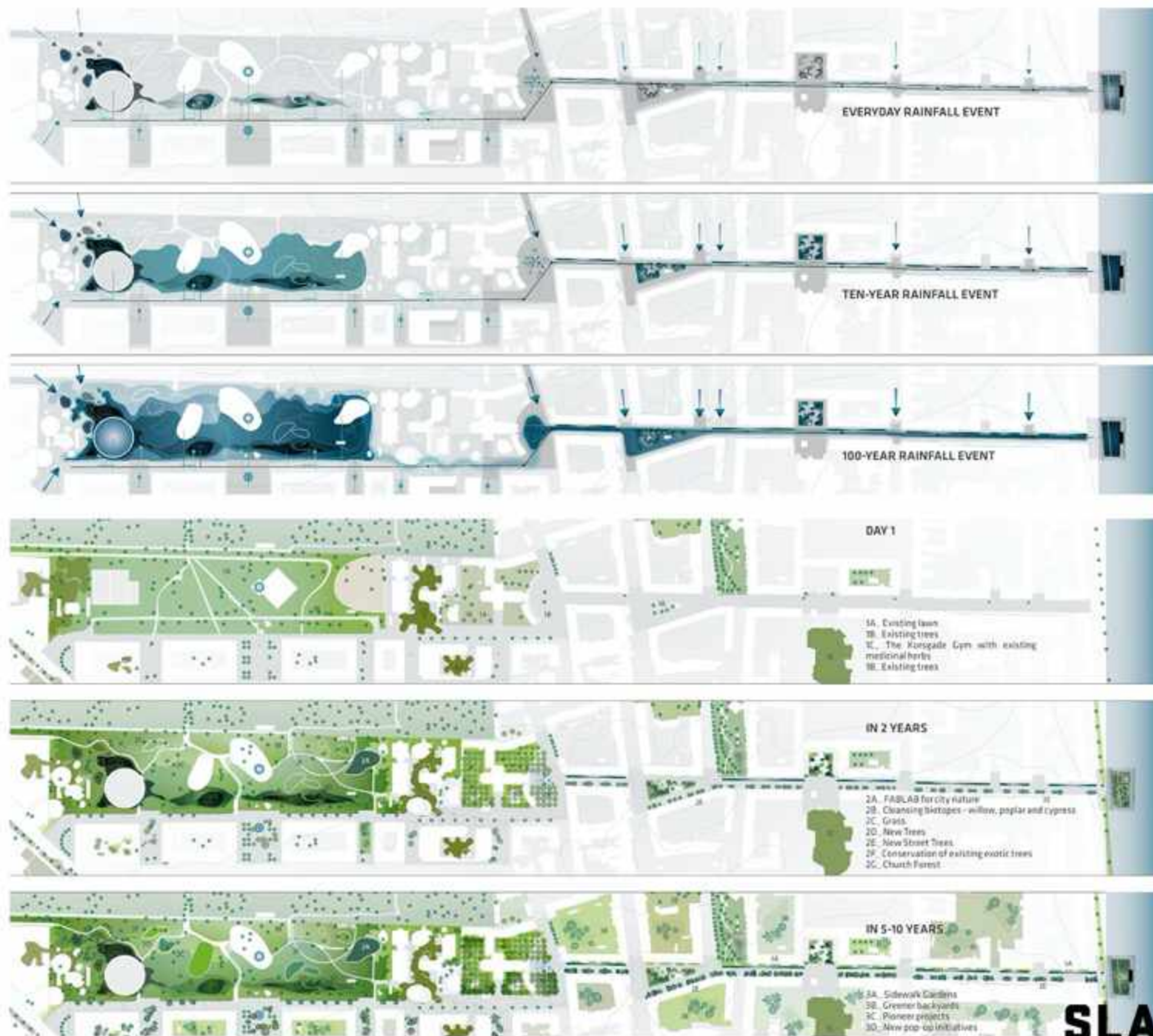


TOMORROW

City Dune over time



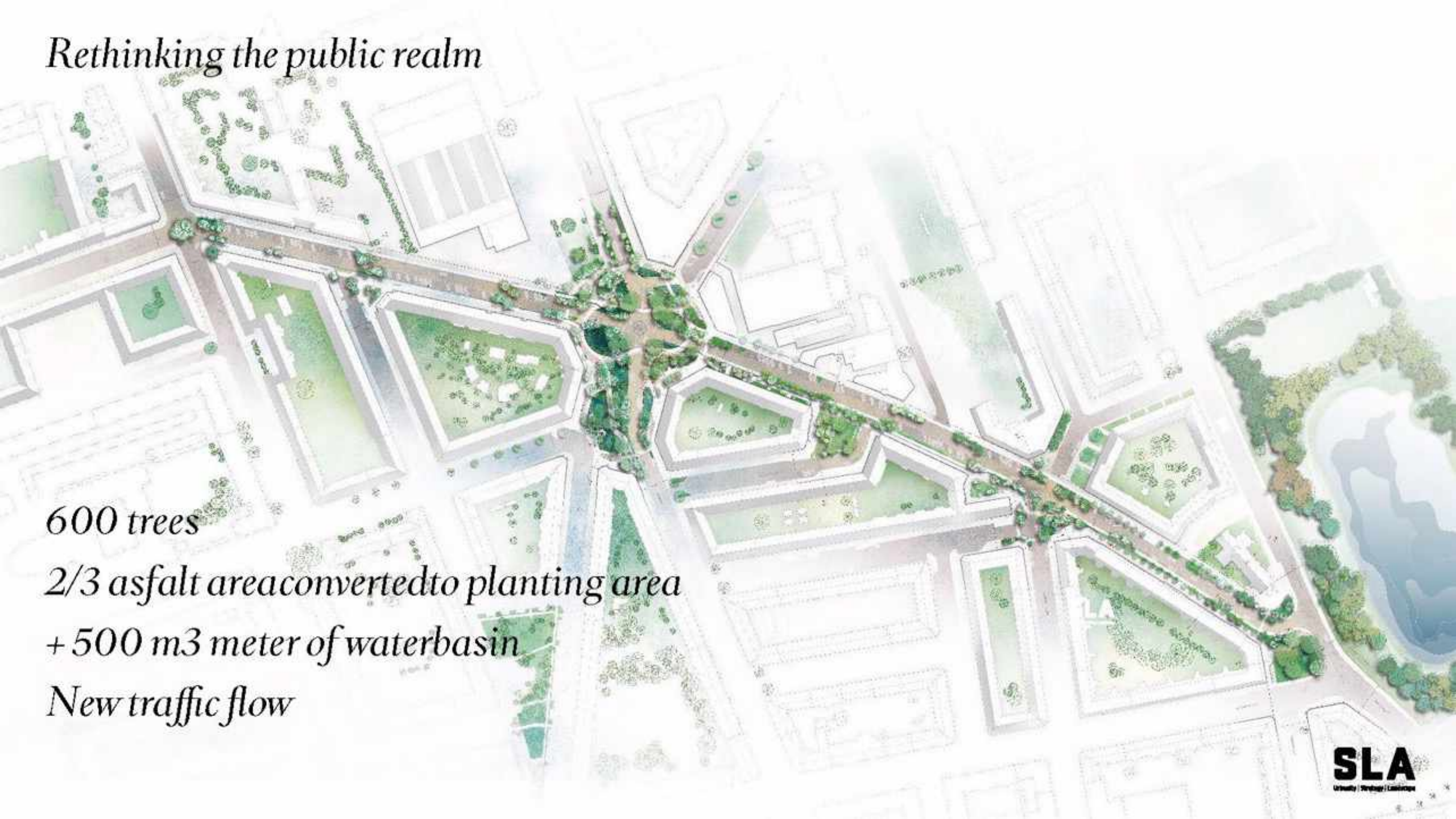
*Naturbaserede designløsninger
skaber byer der gror frem, spirer og
vokser i samklang naturens processer
og det nye klima* SLA



Climate resilient neighborhood

Copenhagen, Denmark
2019

Rethinking the public realm

An architectural rendering of a city block renovation project. The image shows a central intersection with a new, landscaped pedestrian walkway and green spaces. The surrounding buildings are shown in a light, semi-transparent style, highlighting the new public realm interventions. The central area is filled with trees and greenery, and a water basin is visible on the right side. The overall design emphasizes a more green and pedestrian-friendly urban environment.

600 trees

2/3 asphalt area converted to planting area

+ 500 m³ meter of water basin

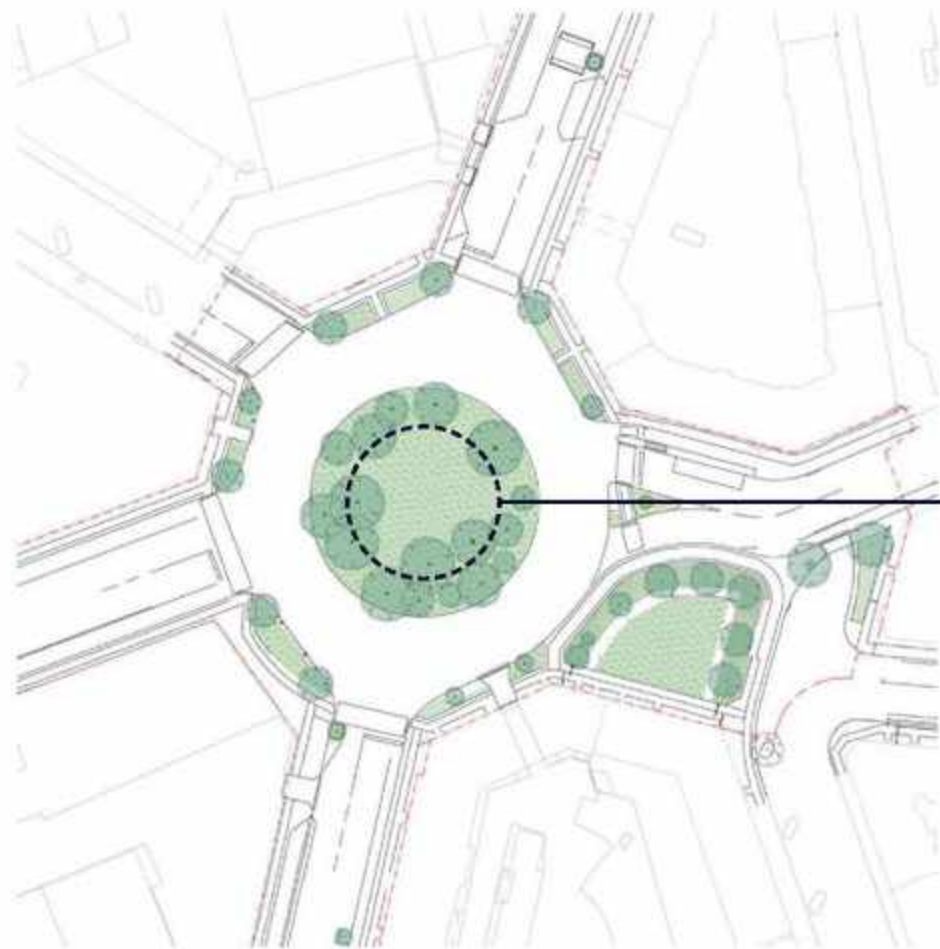
New traffic flow



Before



Before



Before



Now





New urban topography







SLA

Urbanity | Botany | Landscape



PERNILLE
RESTAURANT

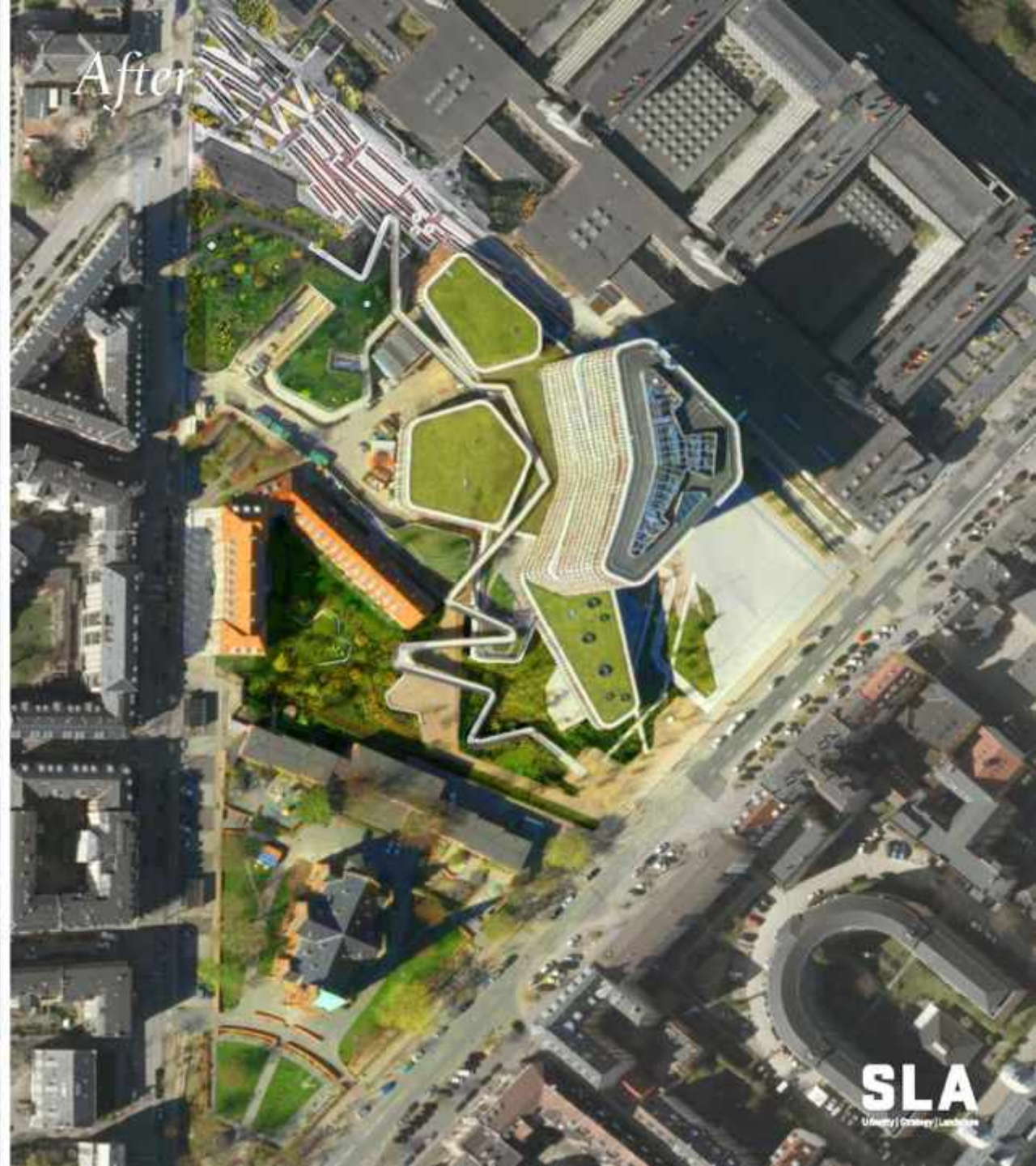
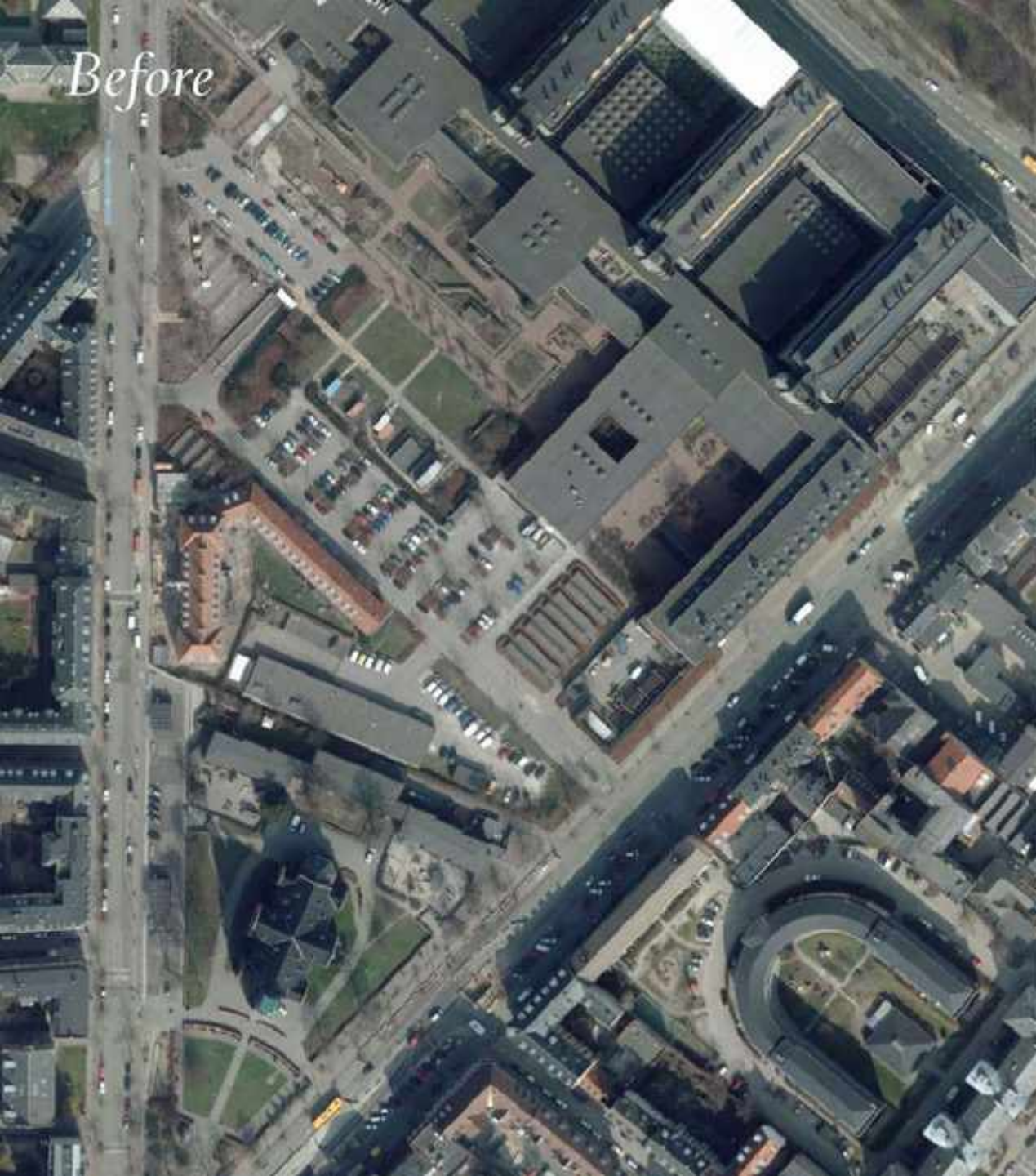
PERNILLE
RESTAURANT

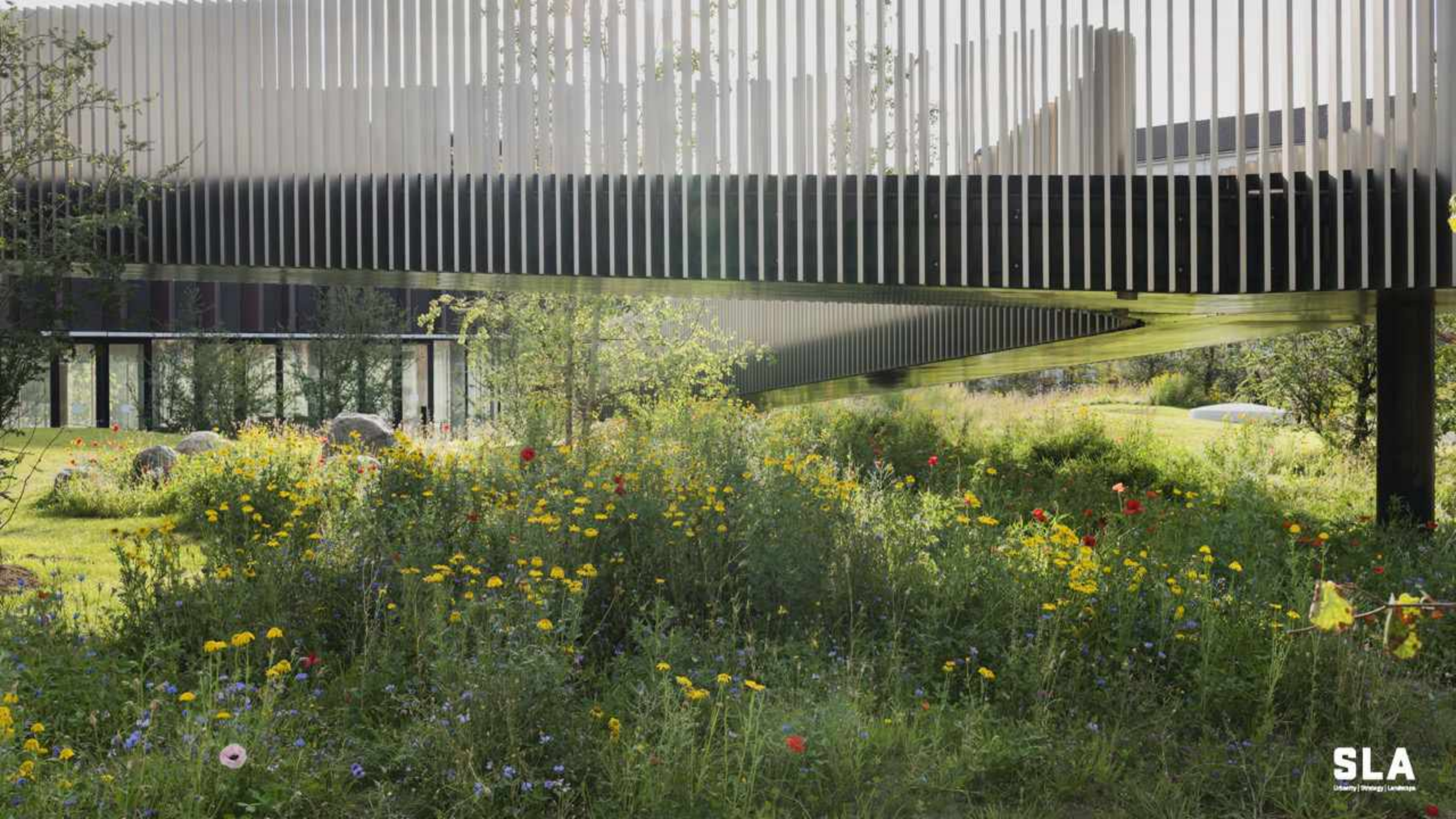


SUND naturepark

*Copenhagen, Denmark
2019*









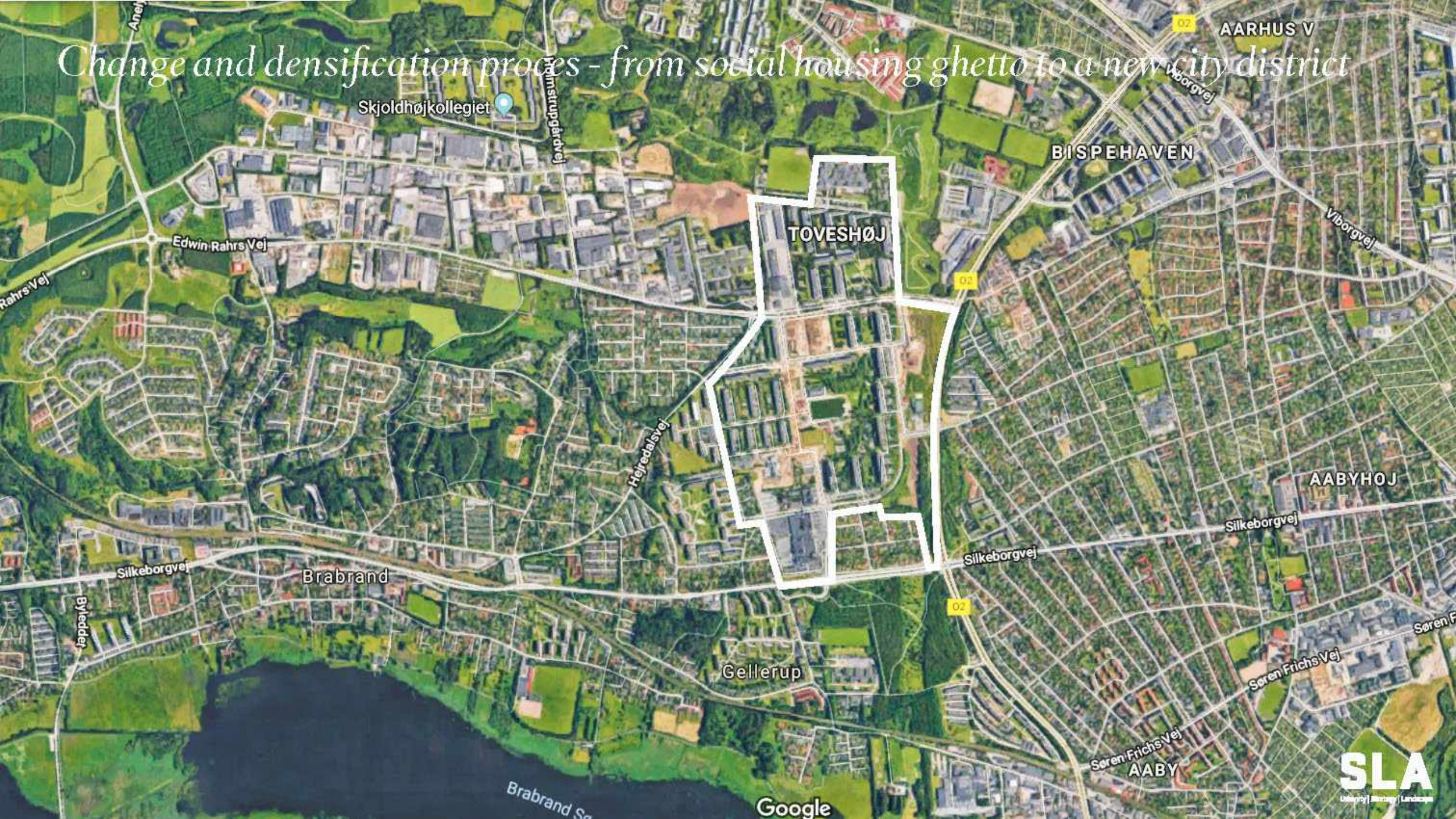


SLA



Naturepark Gellerup
Aarhus, Denmark
2019

Change and densification proces - from social housing ghetto to a new city district



Skjoldhøjkollegiet

Højfredalsvej

02

AARHUS V

Viborgvej

BISPEHAVEN

Viborgvej

TOVESHØJ

02

Edwin Rahrs Vej

Rahrs Vej

Højfredalsvej

AABYHØJ

Silkeborgvej

Silkeborgvej

02

Brabrand

Silkeborgvej

Byledder

Gellerup

Søren F

Søren Frichs Vej

Søren Frichs Vej
AABY

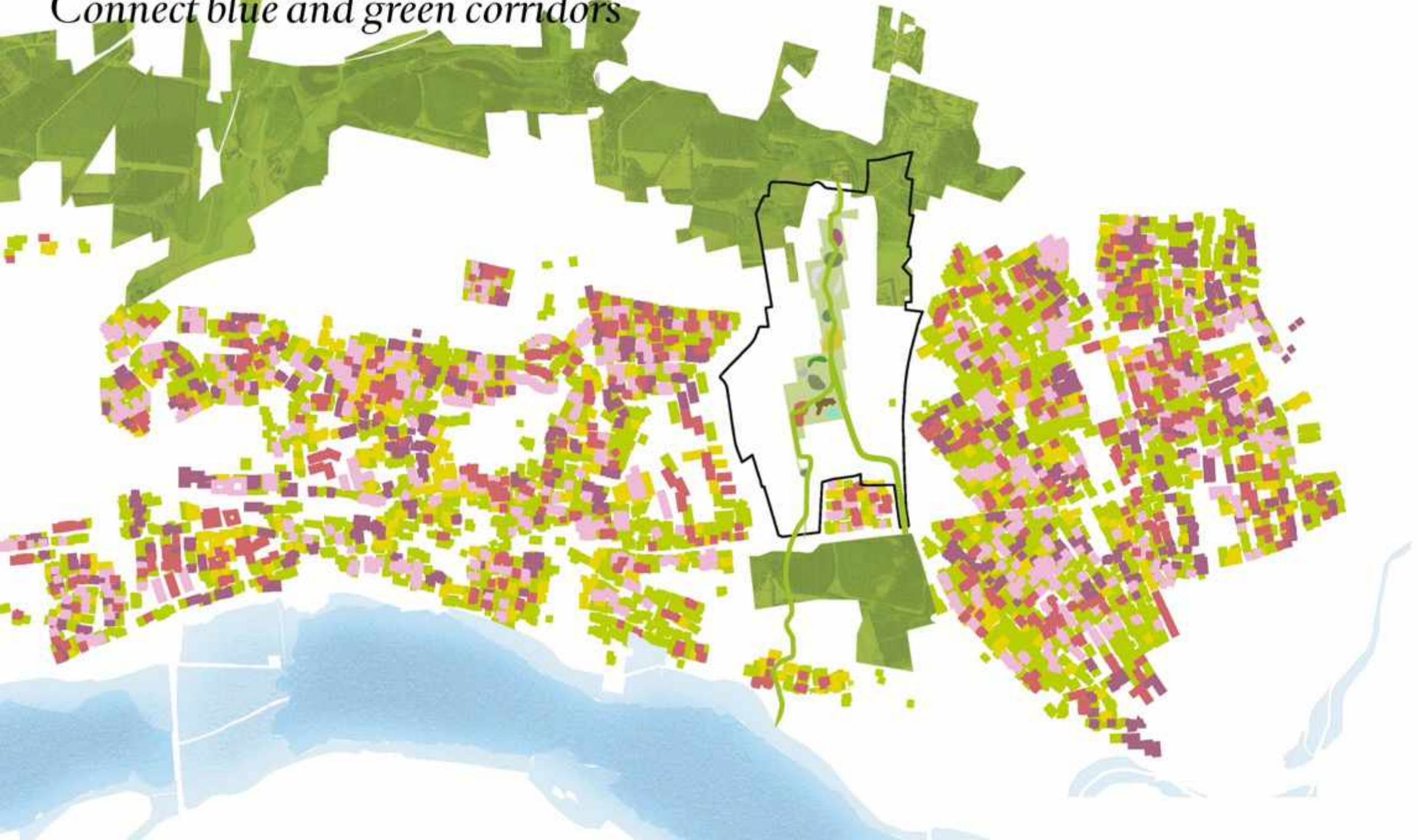
Brabrand Sø

Google

SLA
Urban | Architecture | Landscape



Connect blue and green corridors



*Opening move by infrastructure and a new park
15% of the area, 10 hectares*







Physically opening up to the surroundings



...A waterfall









SLA

Coherence, visual connection



Akerselva allmenningen Bjørvika







TAKKI!