



URBAN ACUPUNCTURE

MARCO CASAGRANDE

PRINCIPAL - CASAGRANDE LABORATORY / PROFESSOR BAS
NORSKE LANDSKAPSARKITEKTERS FORENING 2020

84 REALIZED WORKS IN 15 COUNTRIES

65 ACADEMIC INTERACTIONS IN 25 COUNTRIES



UNESCO GLOBAL AWARD FOR SUSTAINABLE ARCHITECTURE 2015

EUROPEAN PRIZE FOR ARCHITECTURE 2013

COMMITTEE OF INTERNATIONAL ARCHITECTURE CRITICS CICA AWARD 2013

5 x VENICE BIENNALE (2000, 2004, 2006, 2014, 2016)

HAVANA BIENNALE, YOKOHAMA TRIENNALE, ECHIGO-TSUMARI TRIENNALE, BUENOS AIRES BIENNALE, LONDON ARCHITECTURE BIENNALE, CHINA CENTRAL ACADEMY OF FINE ARTS BIENNALE, PUERTO RICO BIENNALE, FIRENZE BIENNALE, MONTREAL BIENNALE, ALASKA DESIGN FORUM, TAIWAN DESIGN EXPO, BEAUFORT TRIENNALE, TALLINN ARCHITECTURE BIENNALE, DEMETER HOKKAIDO, VICTORIA & ALBERT MUSEUM, MOSCOW URBAN FORUM

RED DOT DESIGN AWARD 2012

WORLD ARCHITECTURE COMMUNITY AWARD 2008, 2009, 2010, 2012, 2014

UNION OF ARCHITECTS OF RUSSIA ZELELY PROEKT AWARD 2012





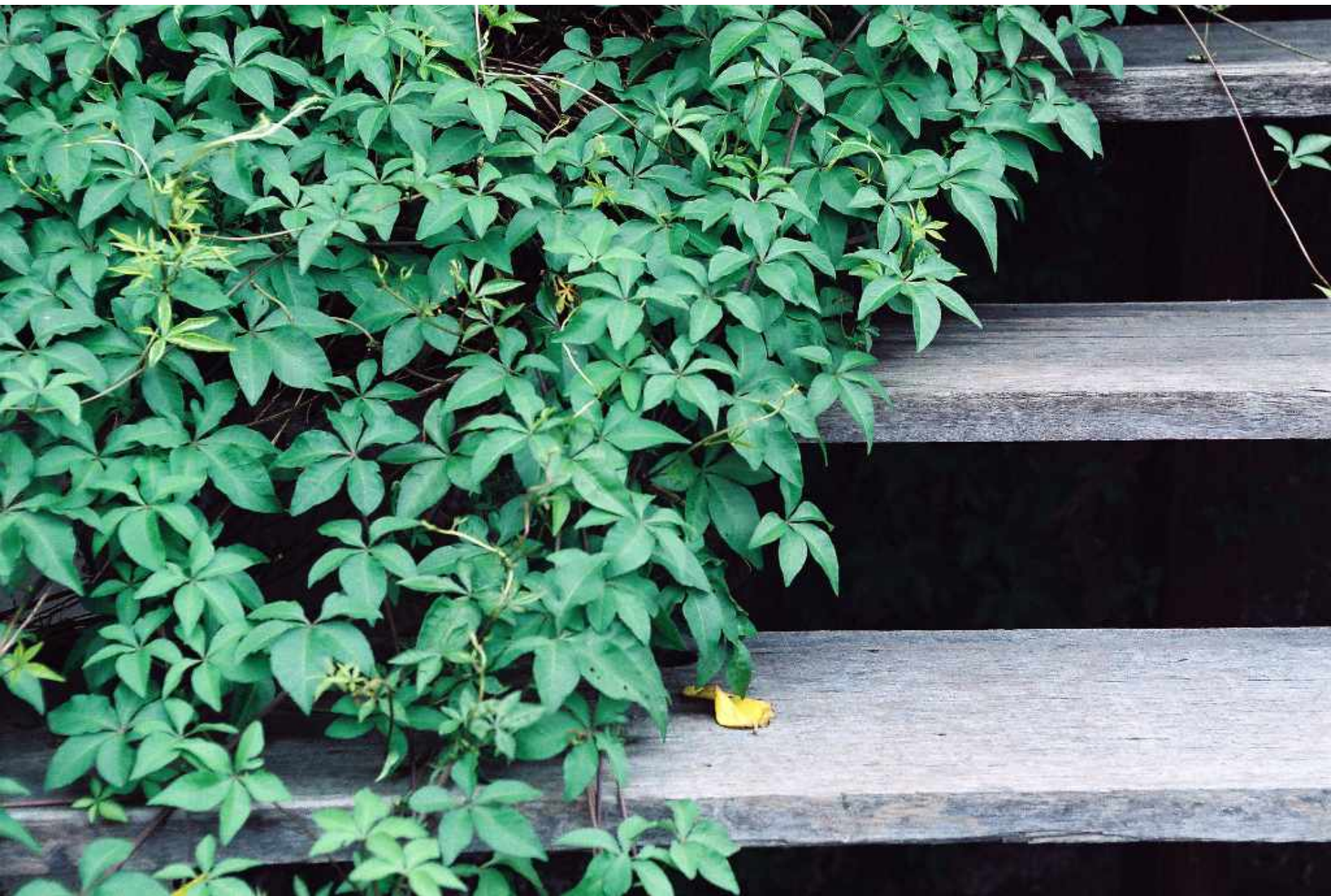
















五
政
亂
去
報
發



RUIN IS WHEN MAN-MADE HAS BECOME PART OF NATURE

















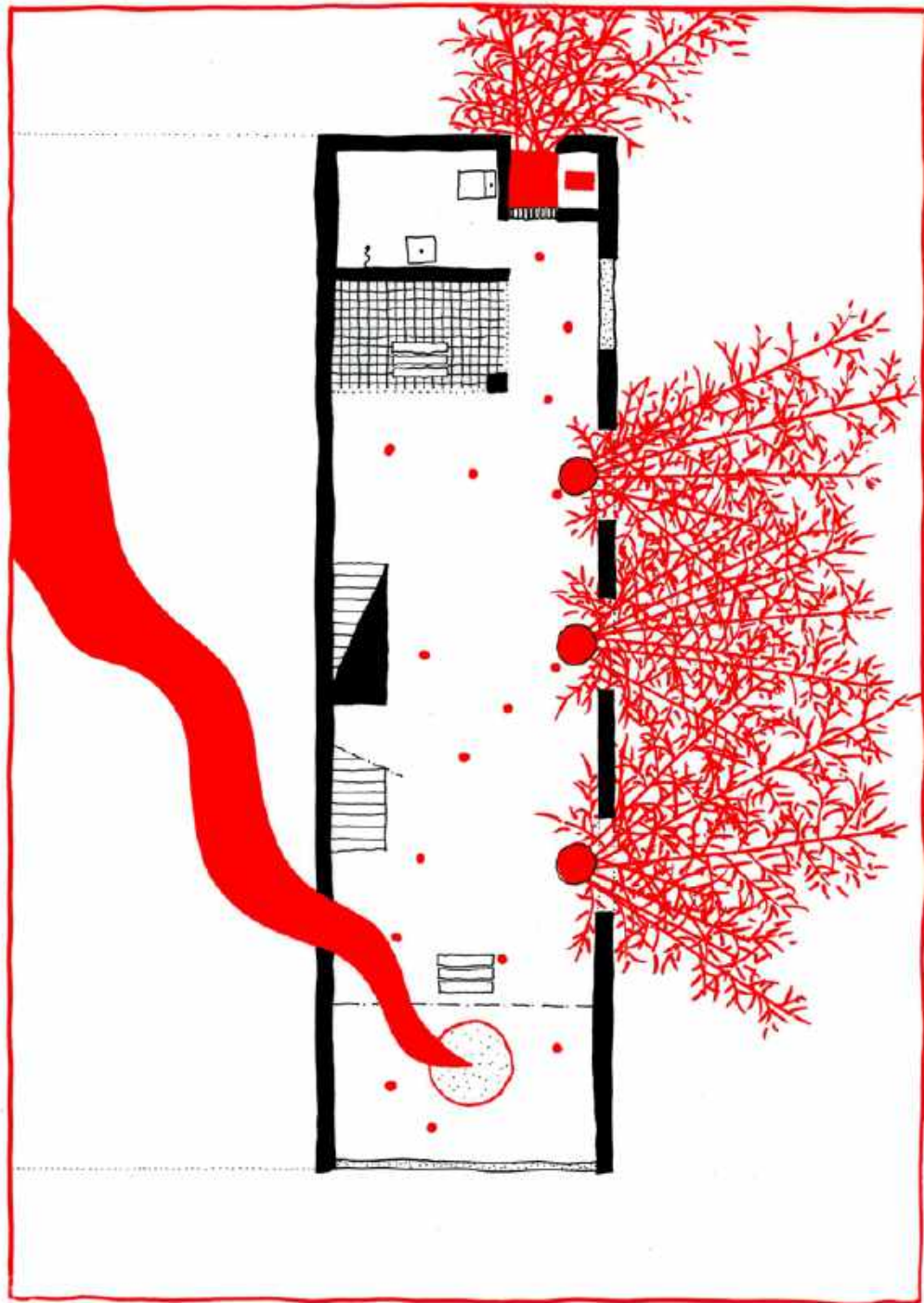
深
保
單
社
及
支
持

深
保
單
社
及
支
持



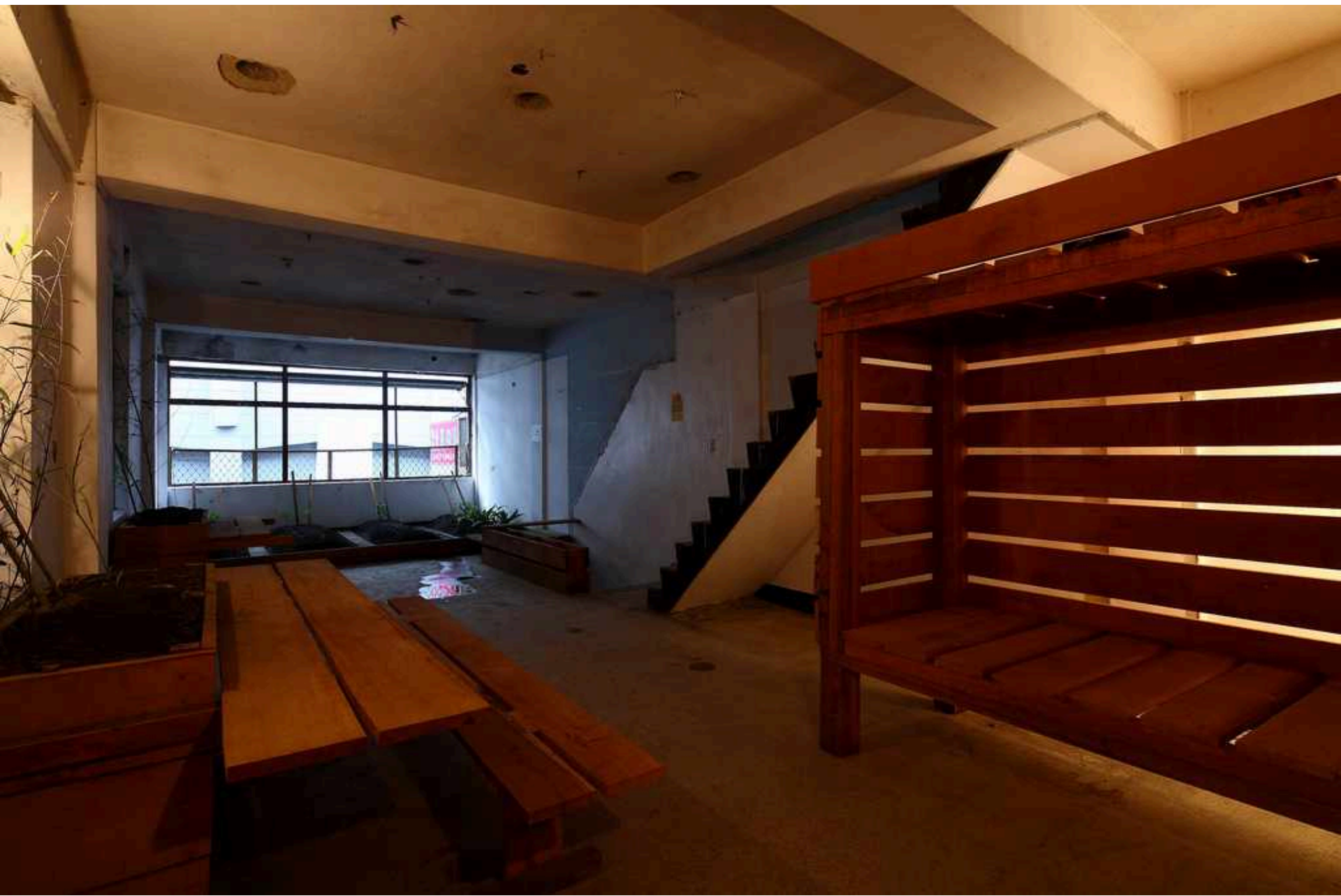








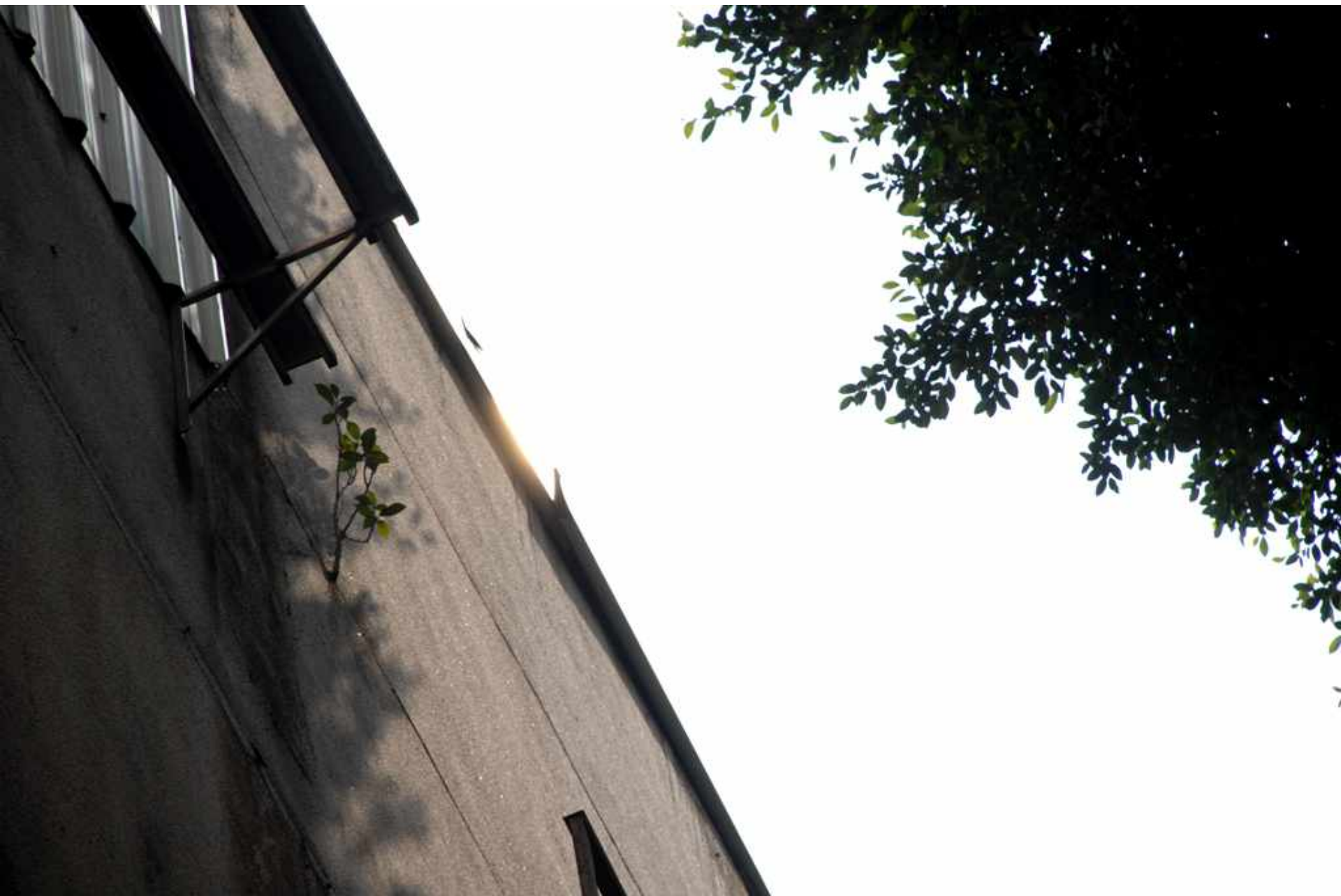




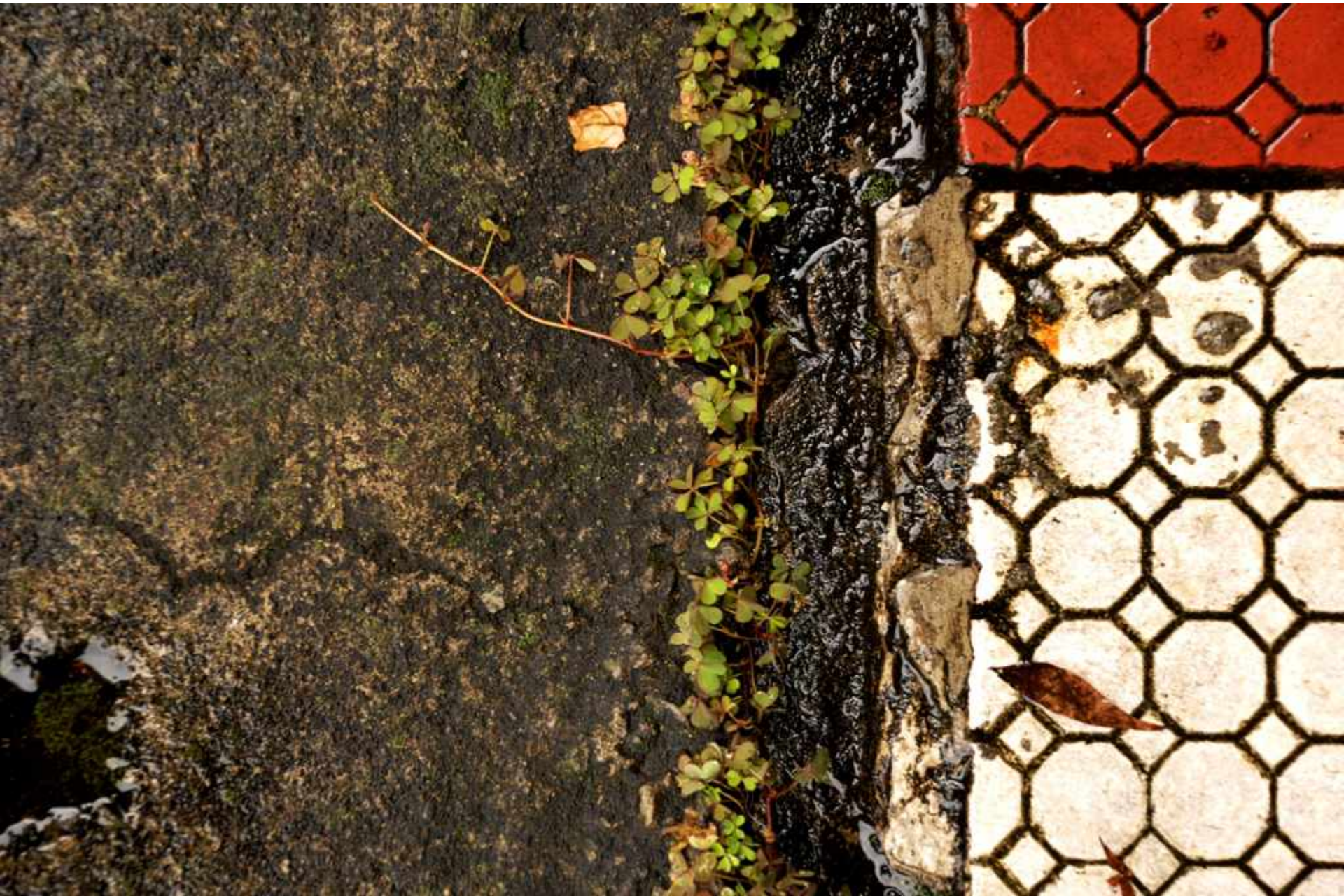




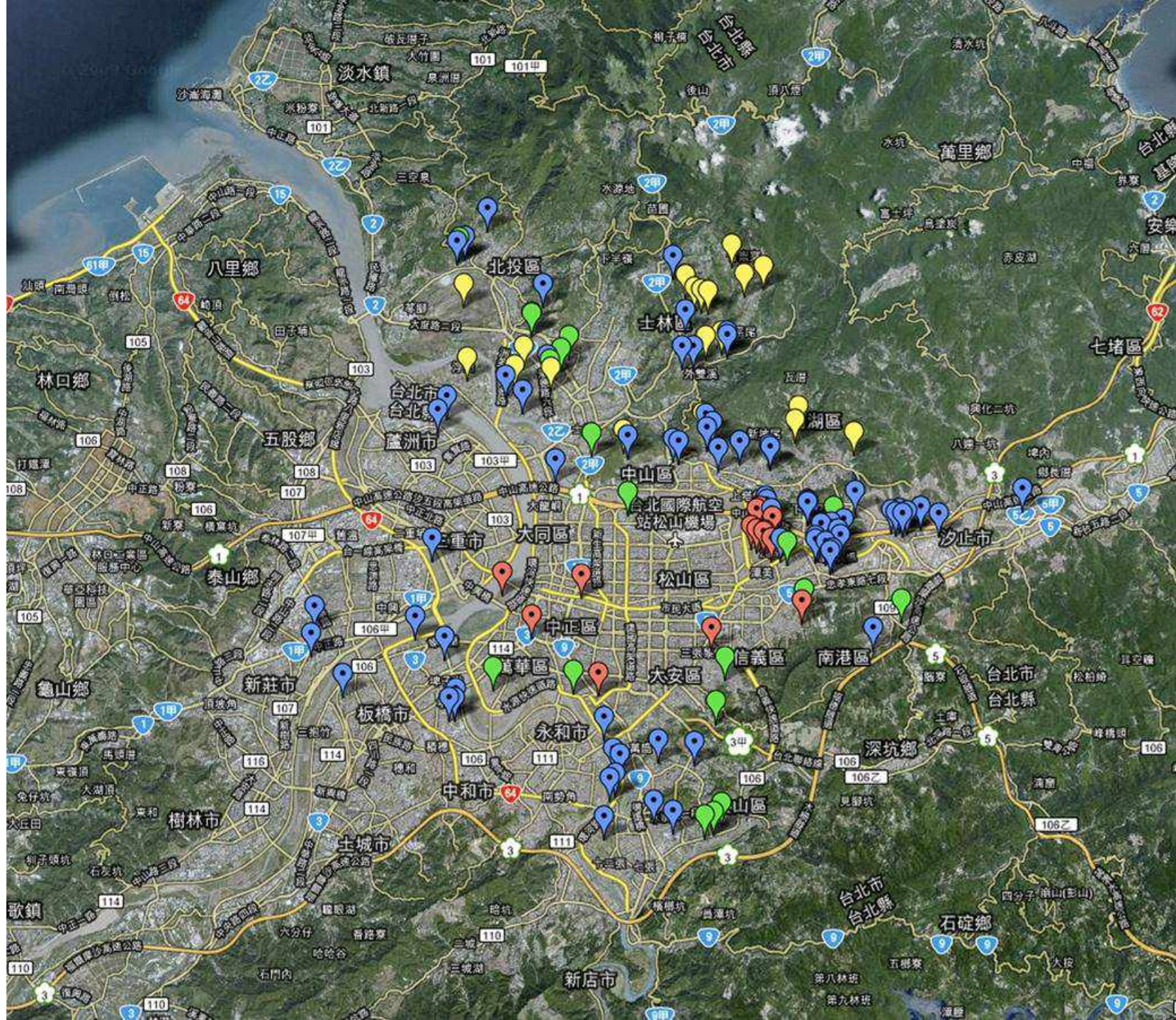
















ILLEGAL ARCHITECTURE

URBAN ACUPUNCTURE

RIVER URBANISM

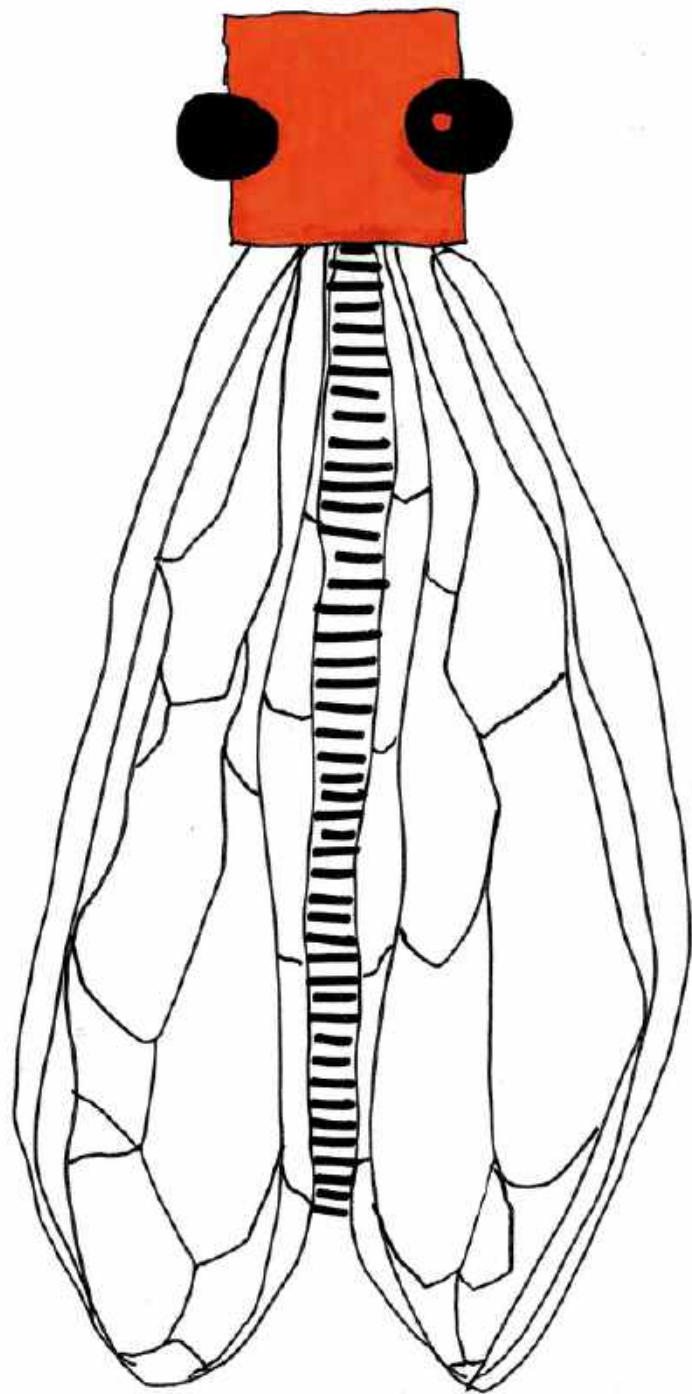
URBAN NOMAD

ORGANIC MACHINE

PARASITE URBANISM

LOCAL KNOWLEDGE

• *ANARCHIST GRANNIES*













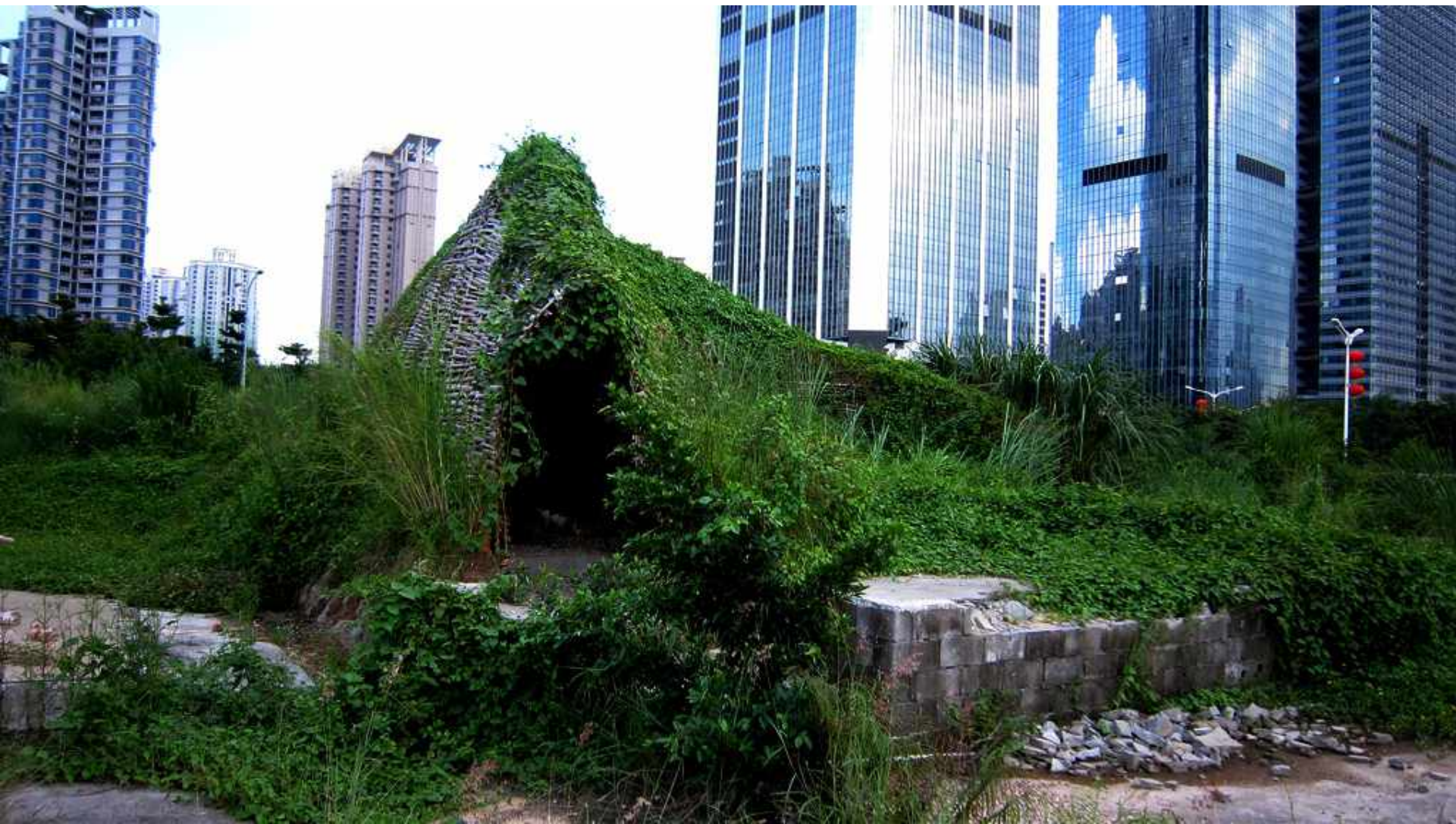






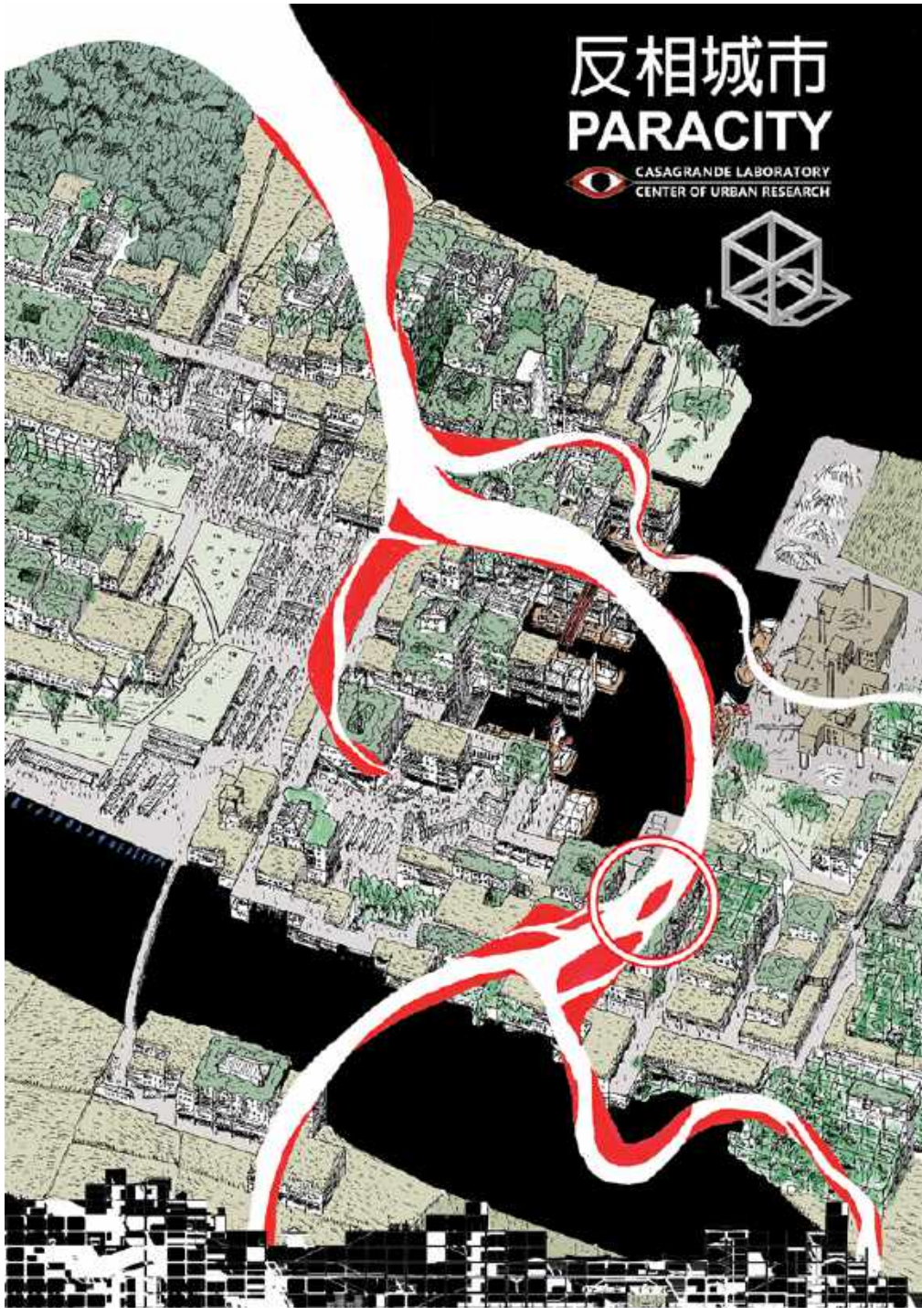


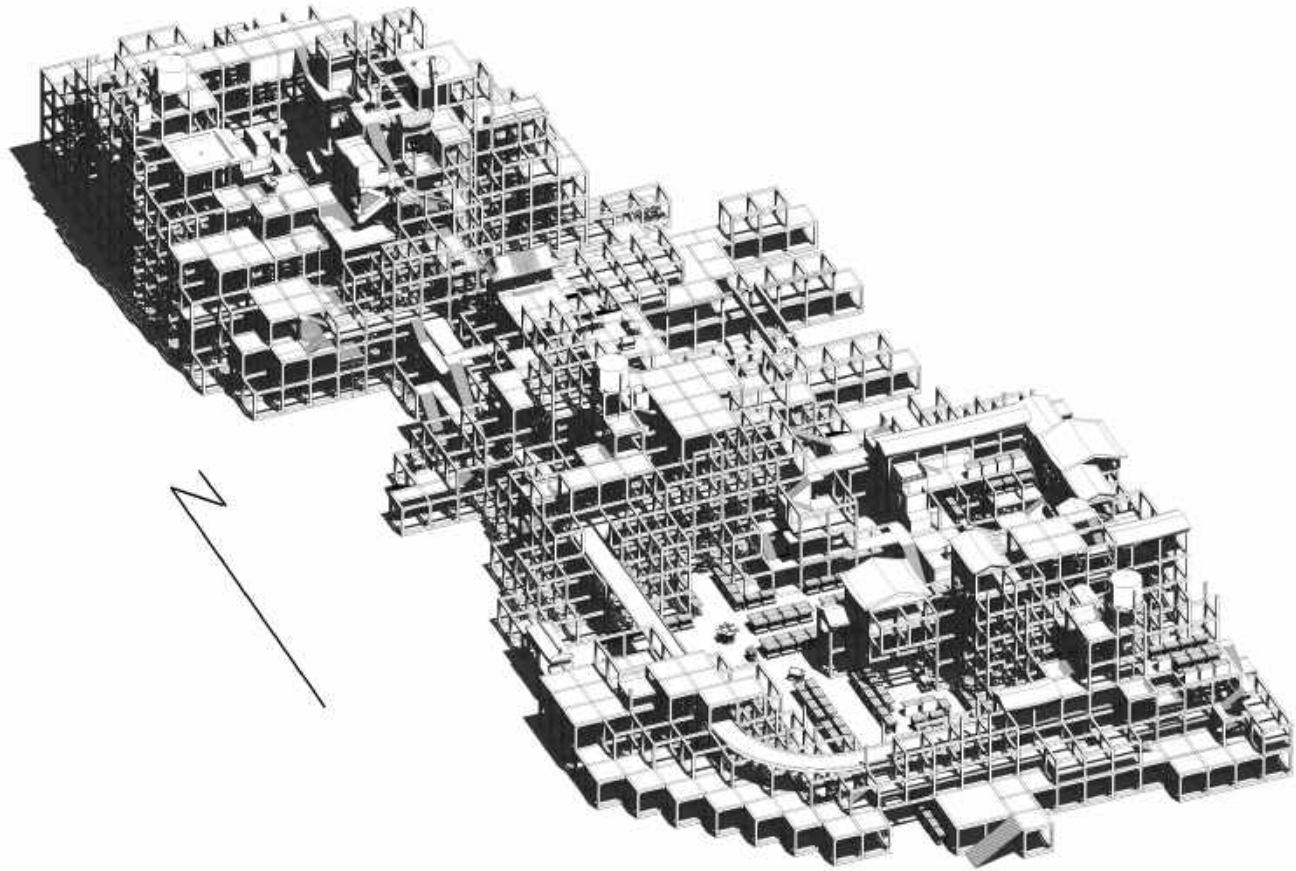




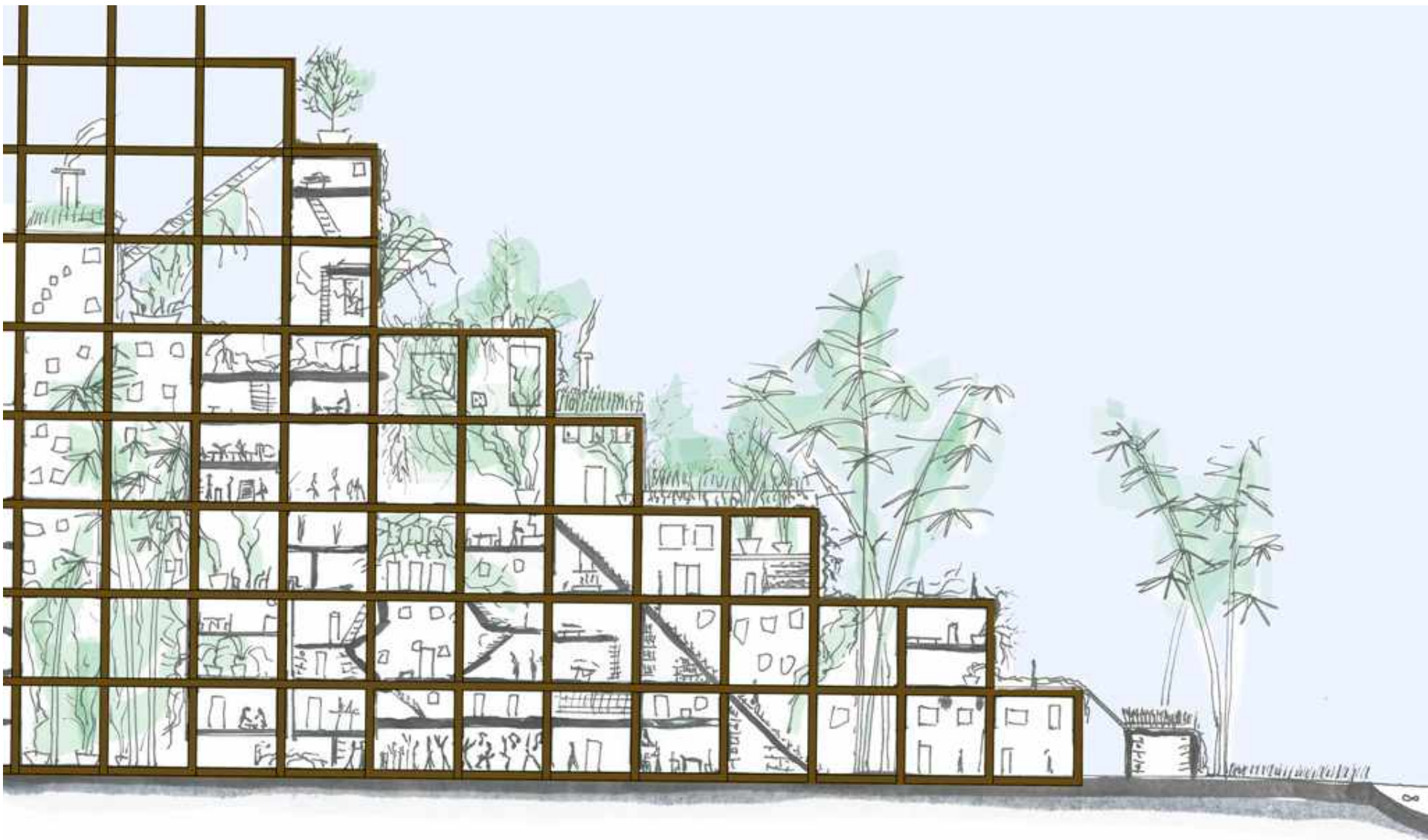
反相城市 PARACITY

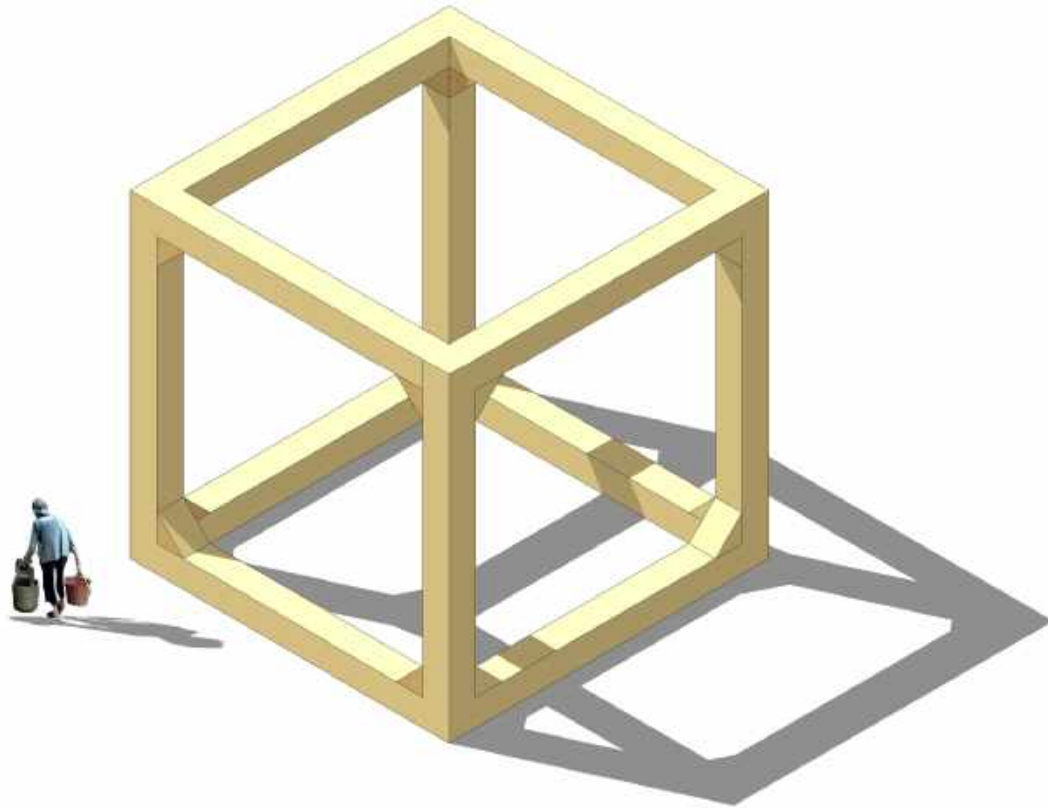
CASAGRANDE LABORATORY
CENTER OF URBAN RESEARCH

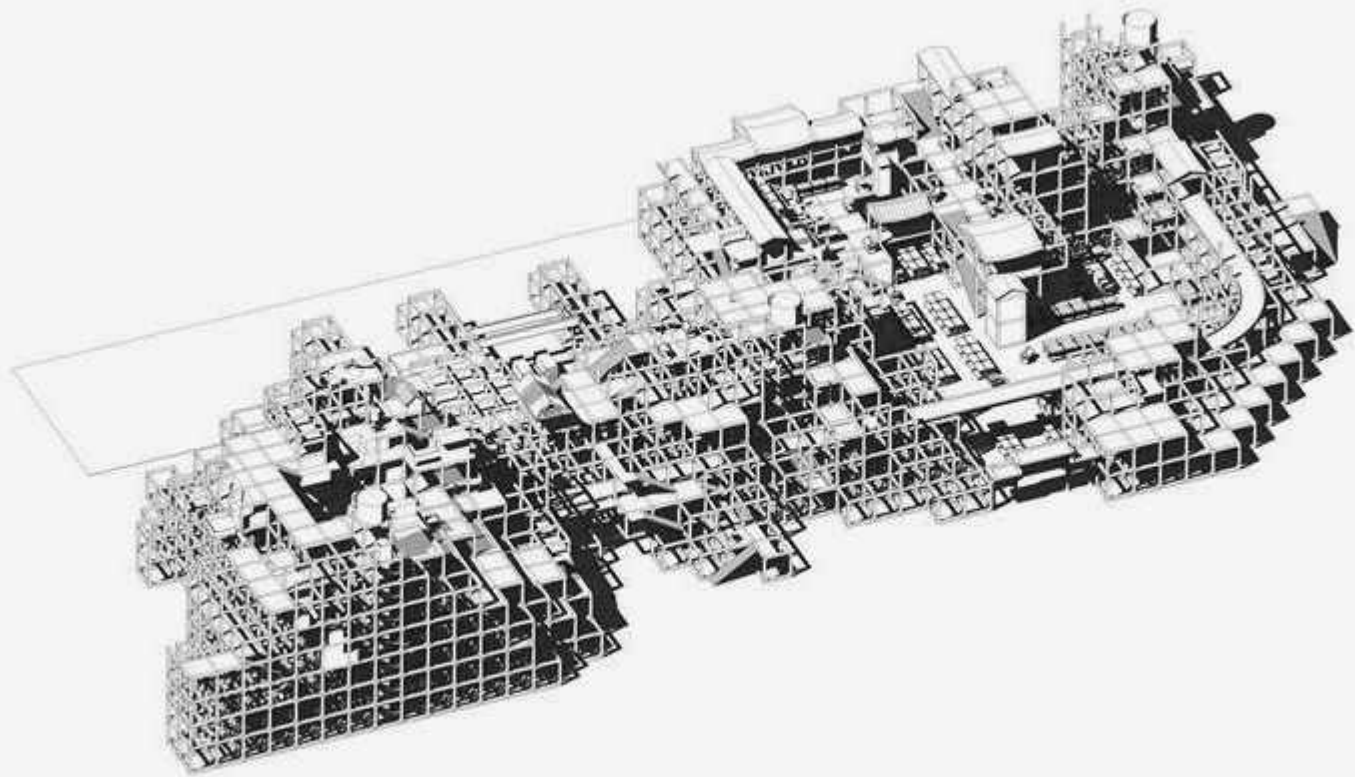
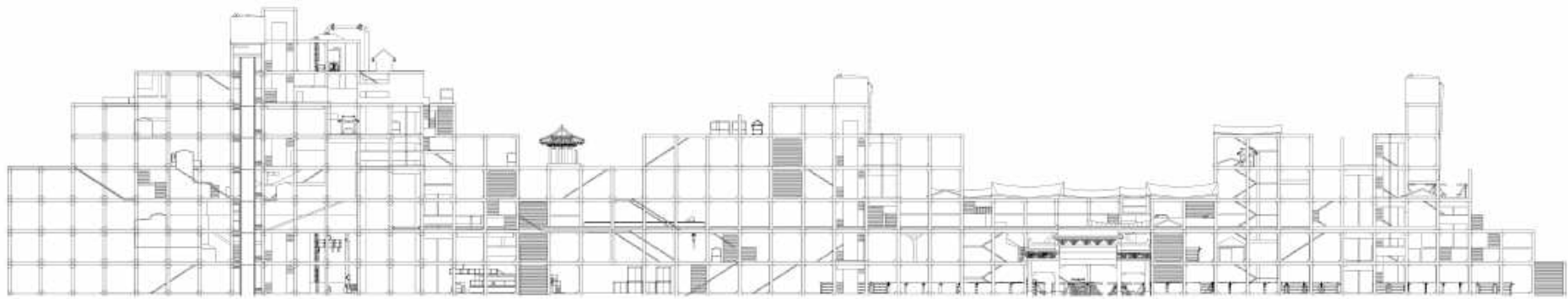




















FIELD

GARDEN

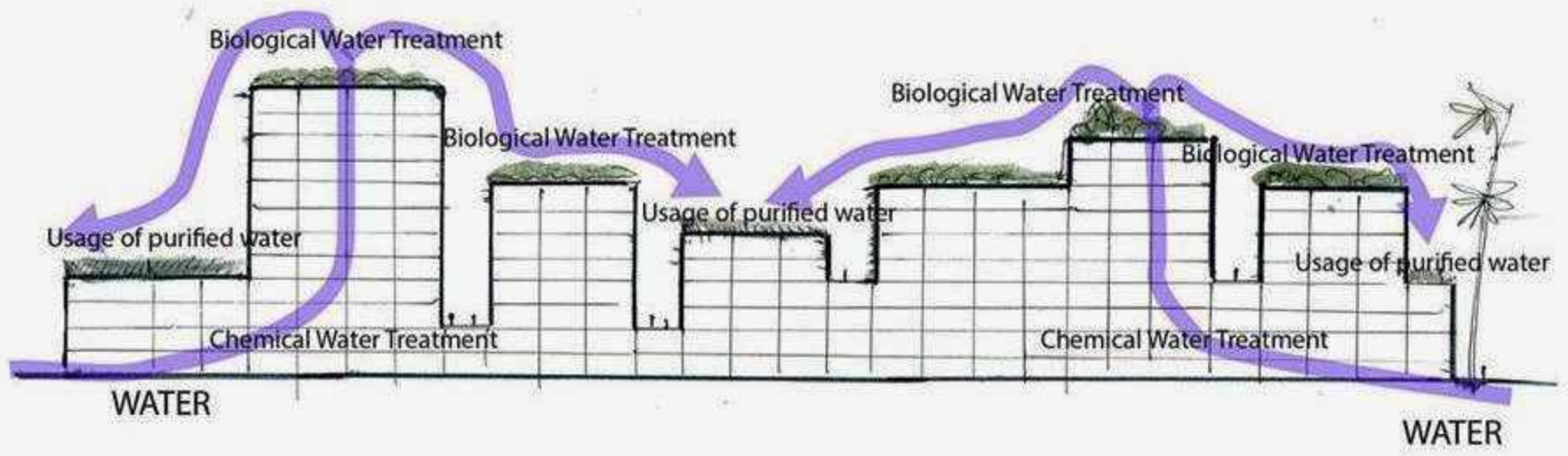
GARDEN

FIELD

GARDEN

GARDEN

FIELD



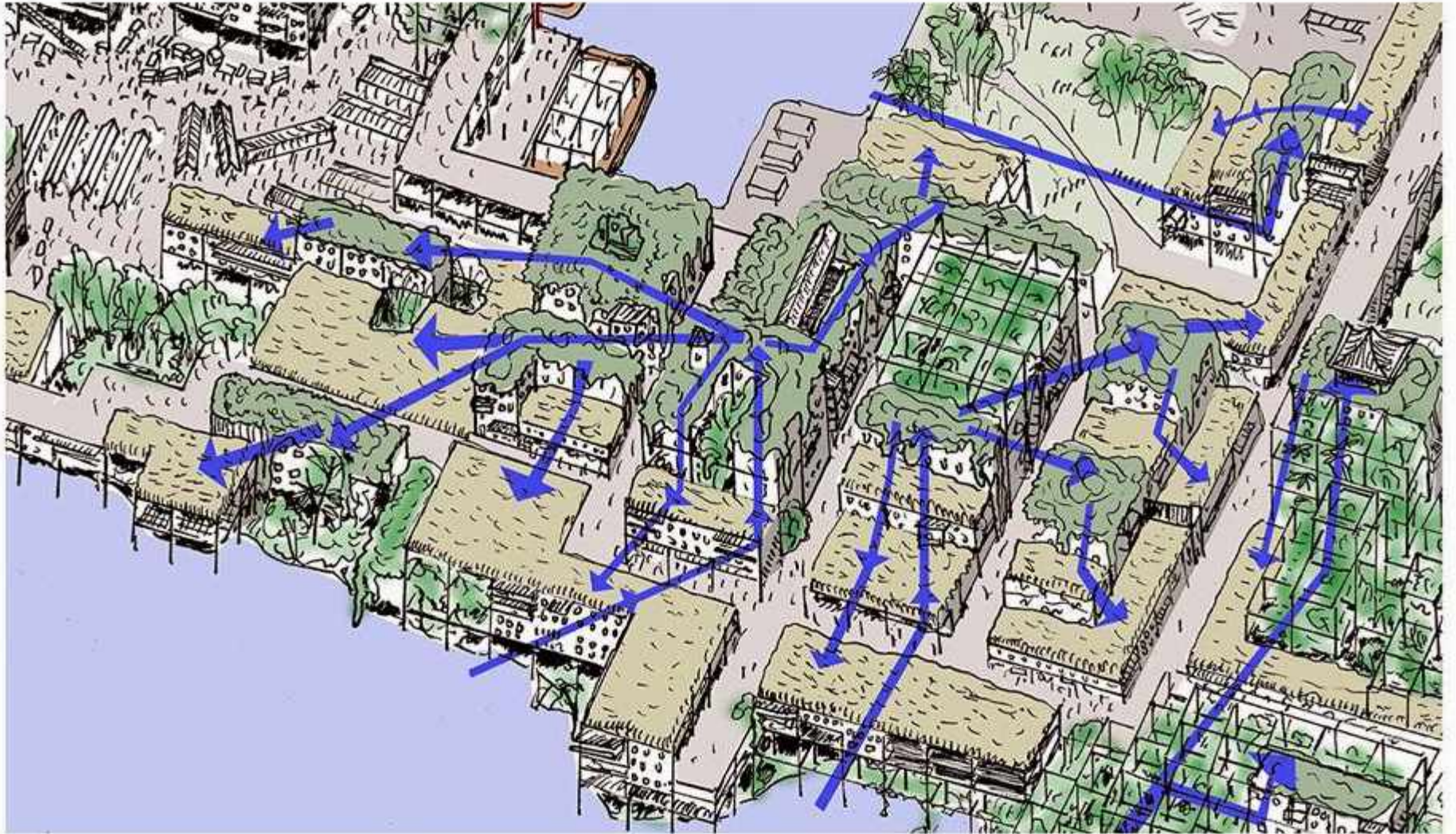
WATER

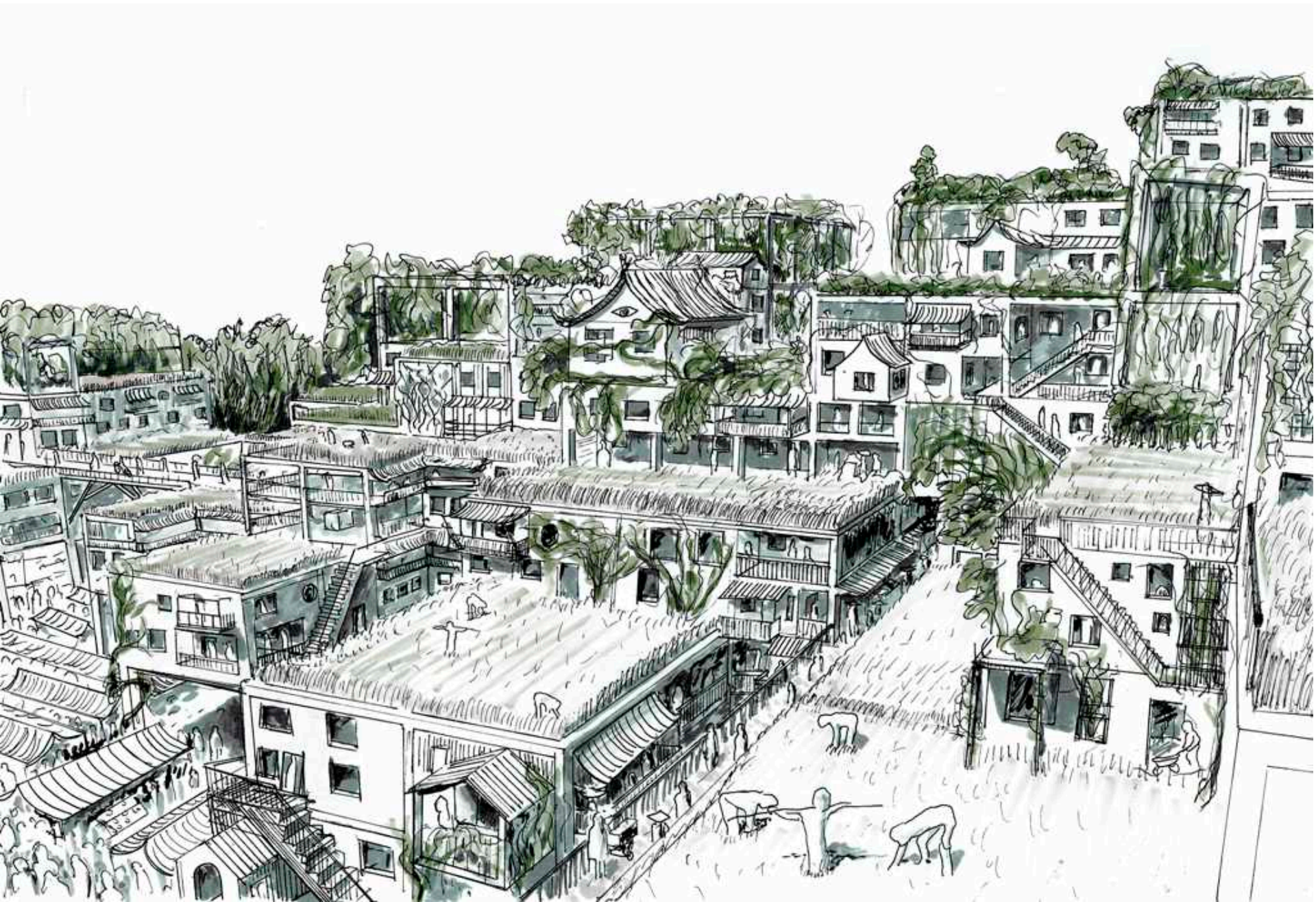
WATER

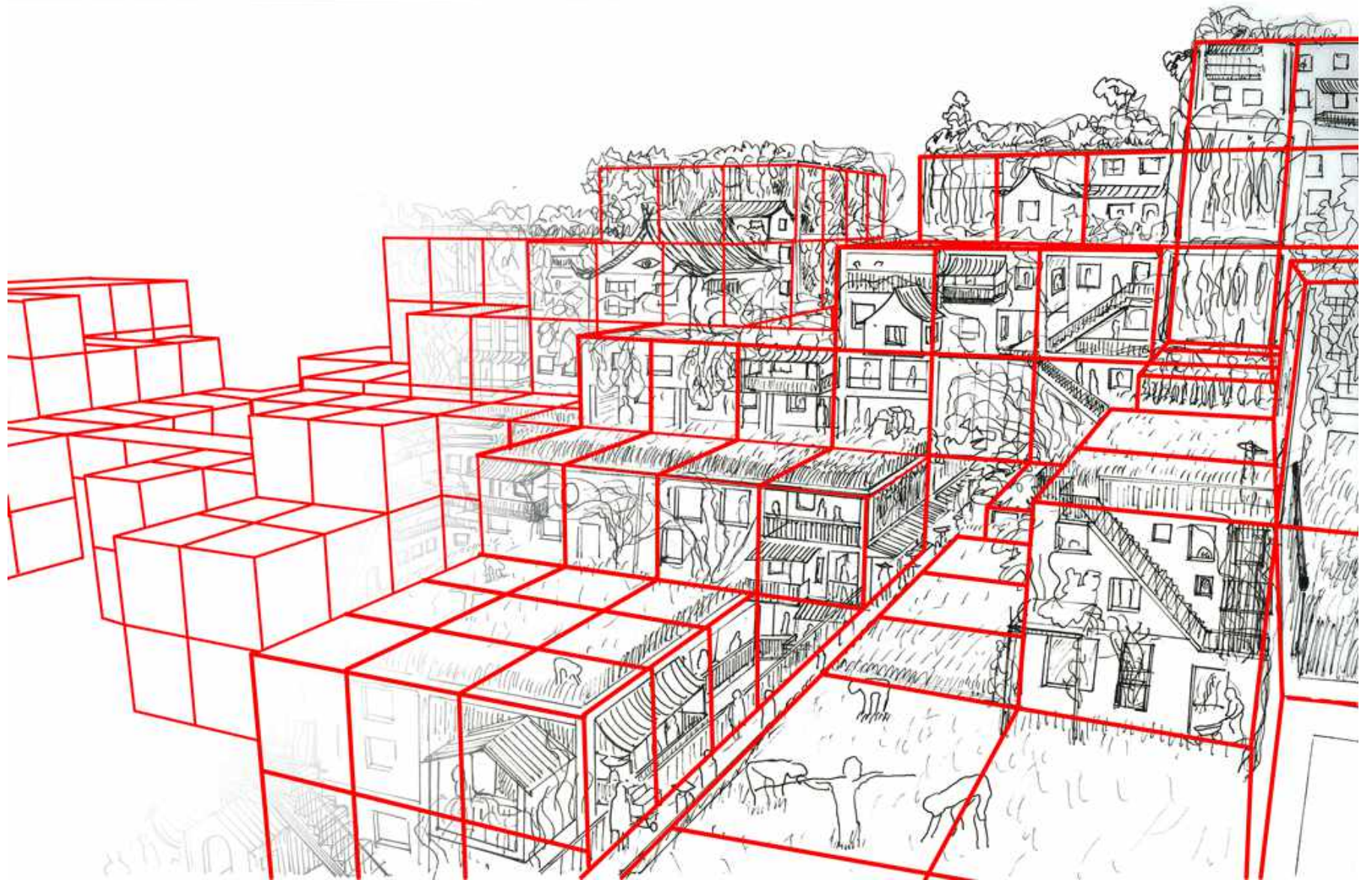
PARACITY

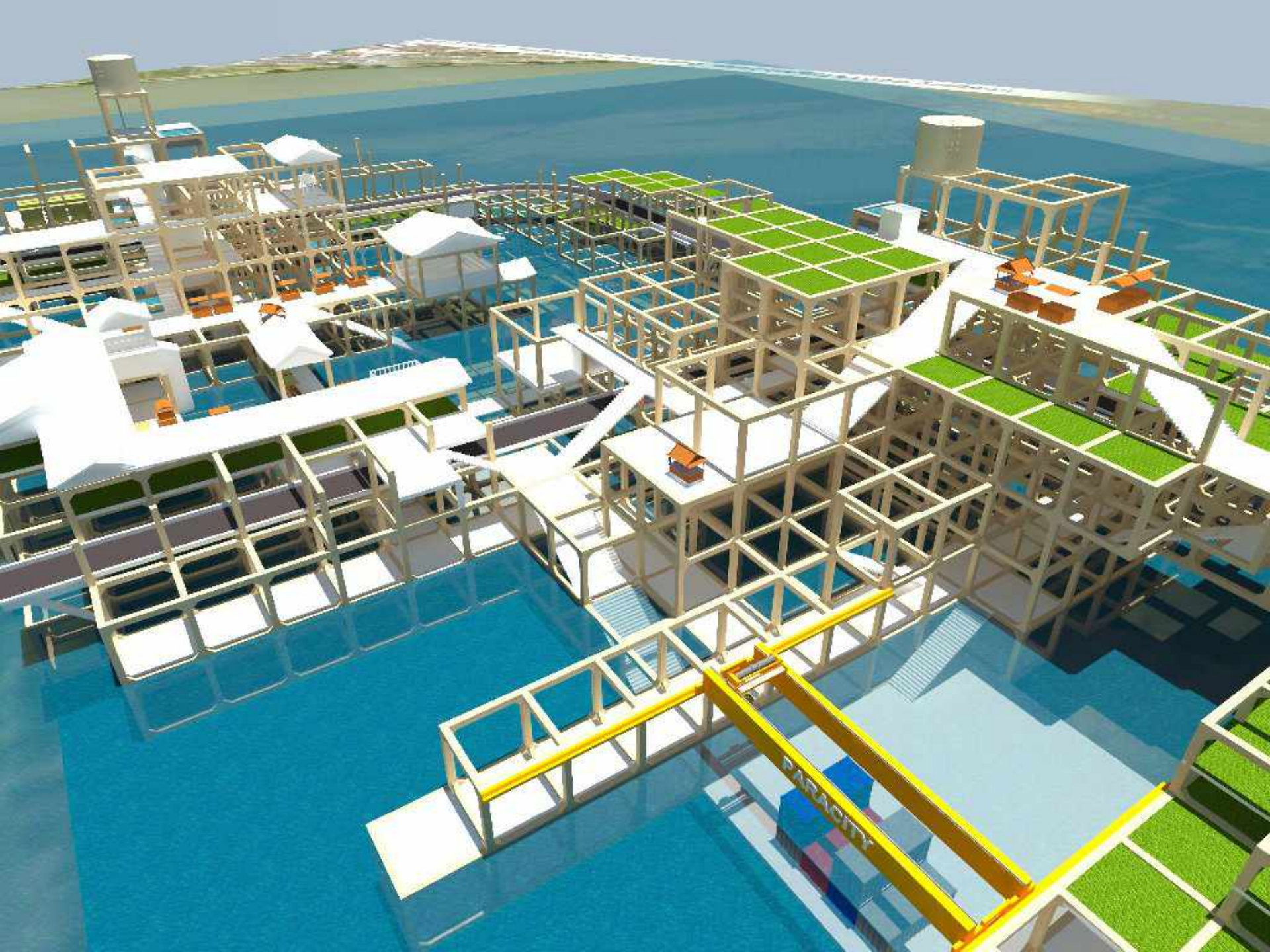
The city will flourish

This really is an organic machine

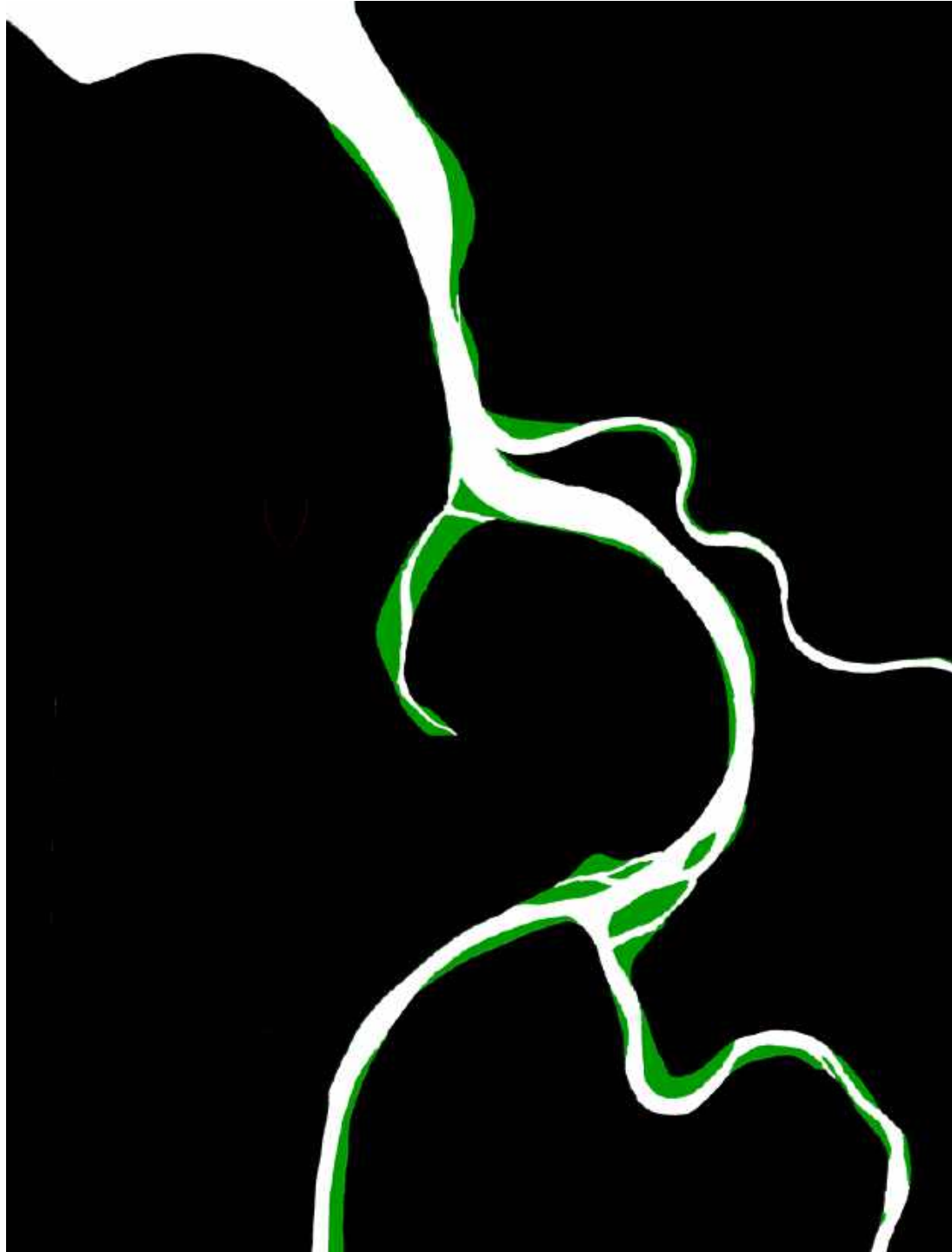


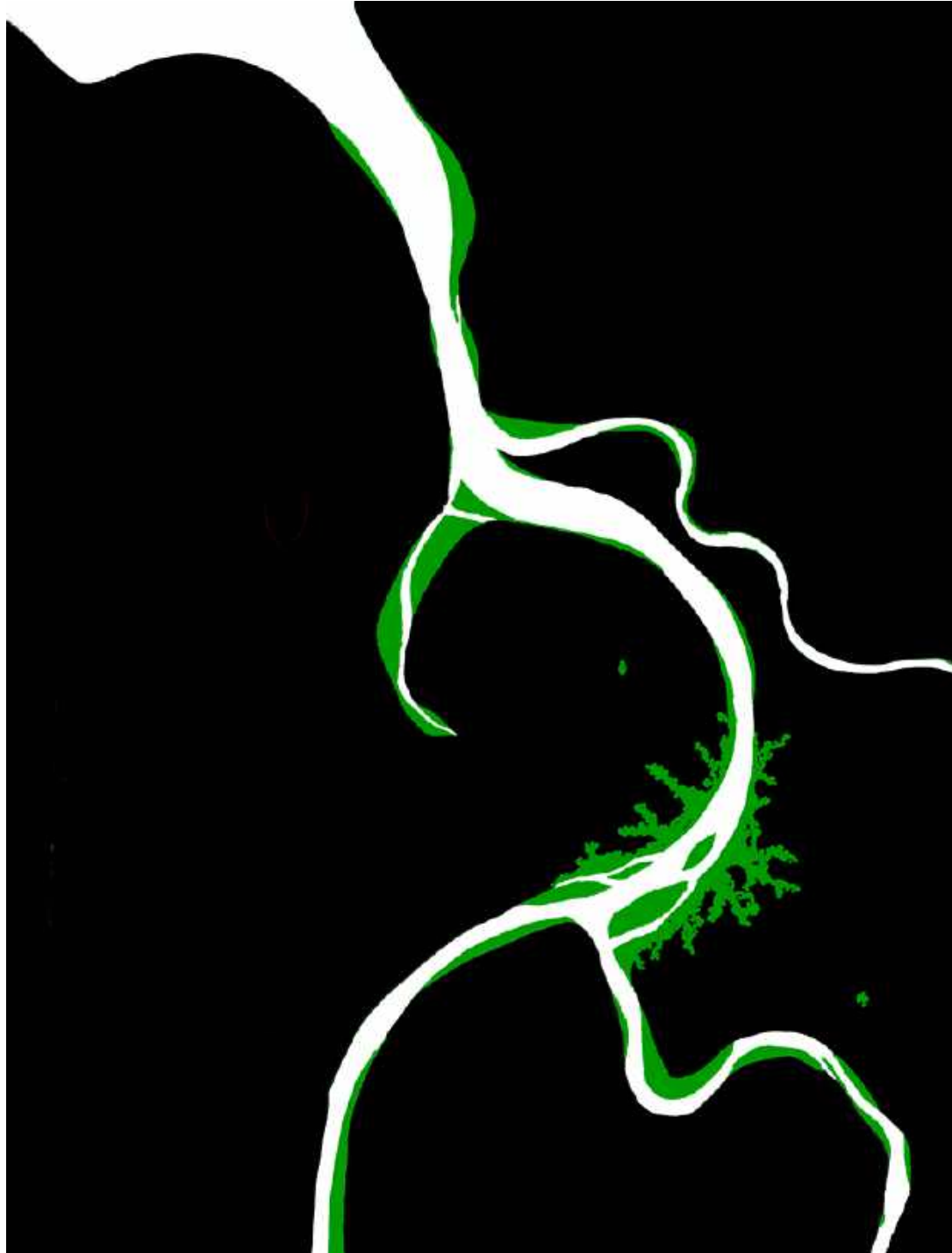


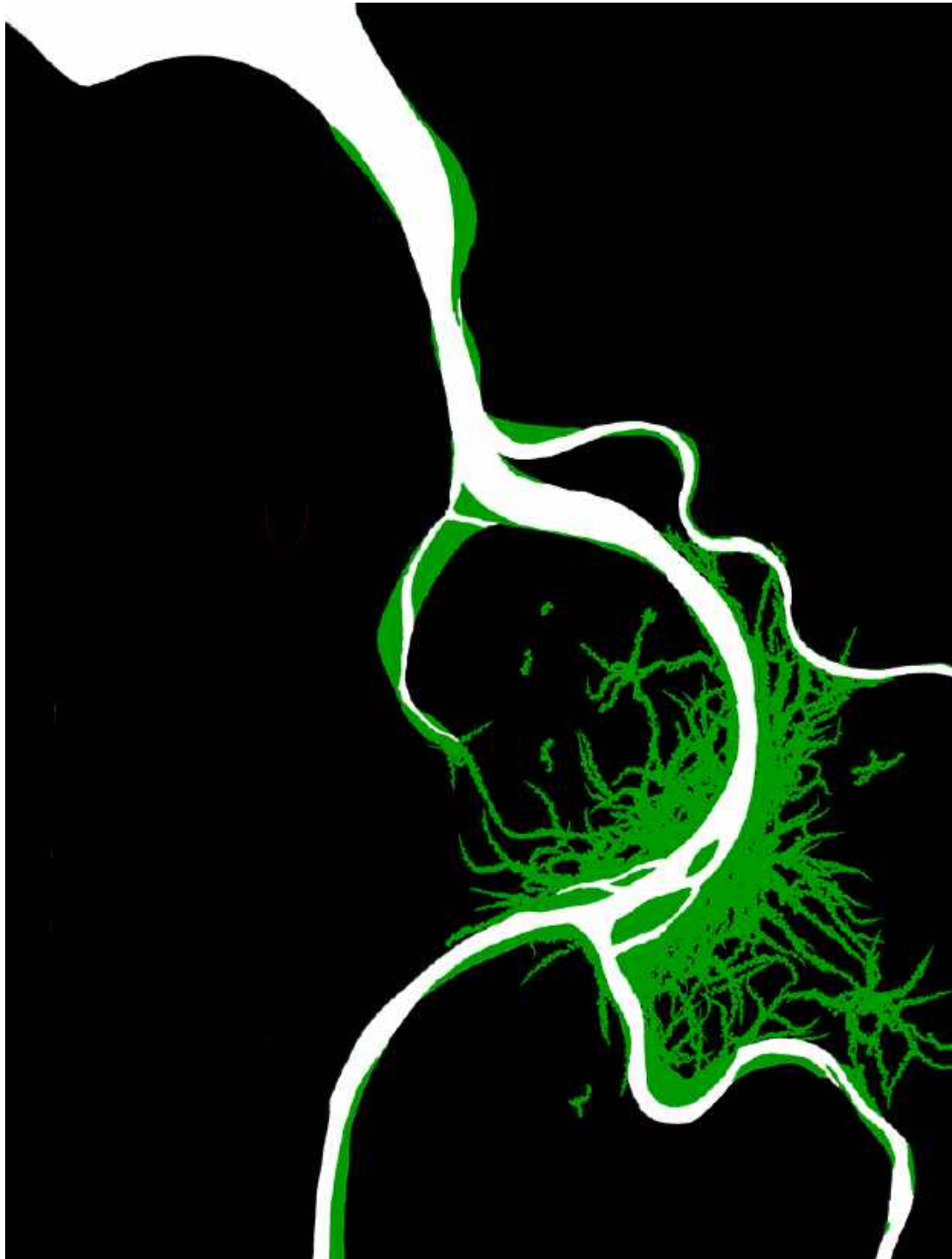














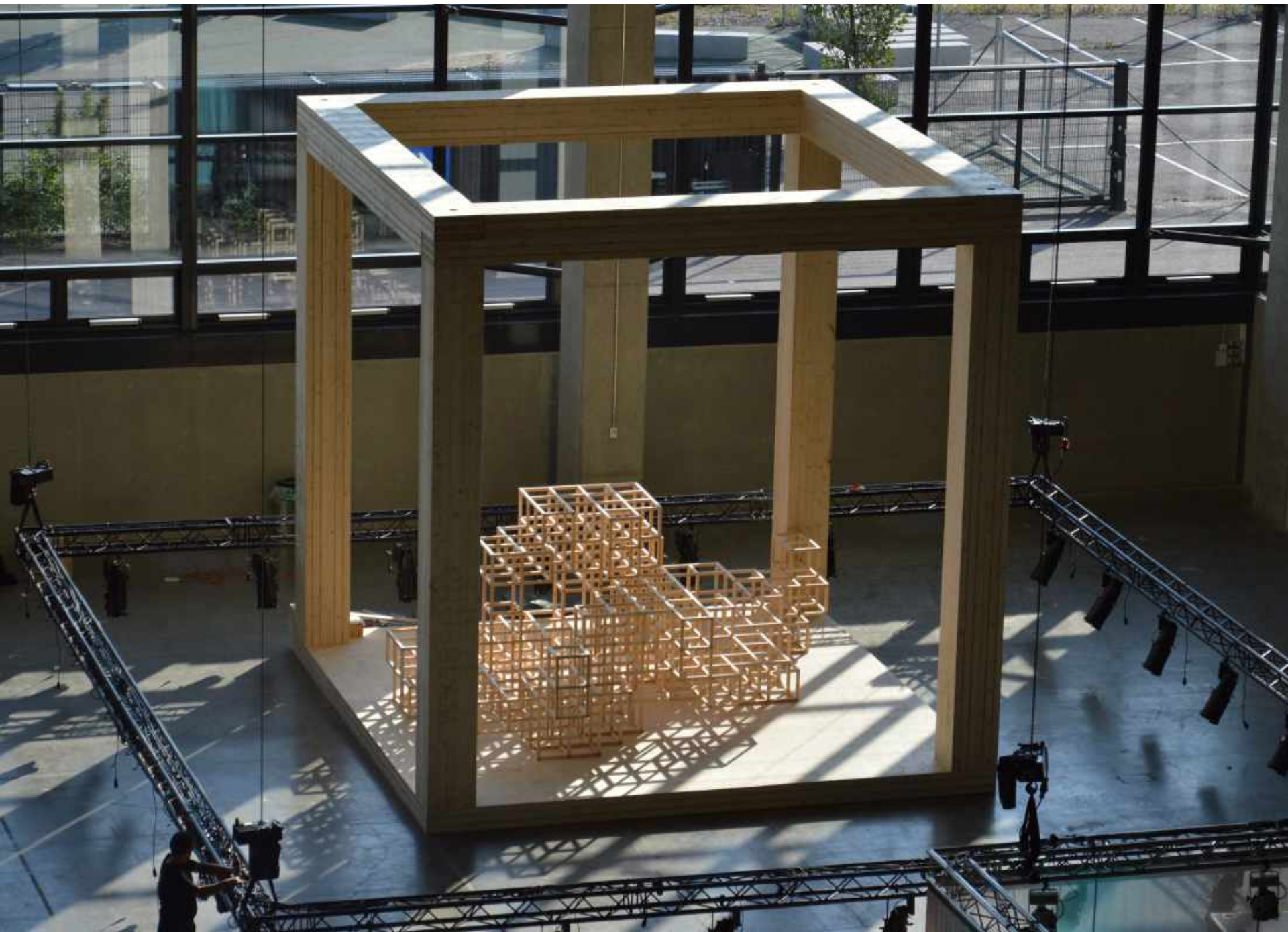
Naita -14



















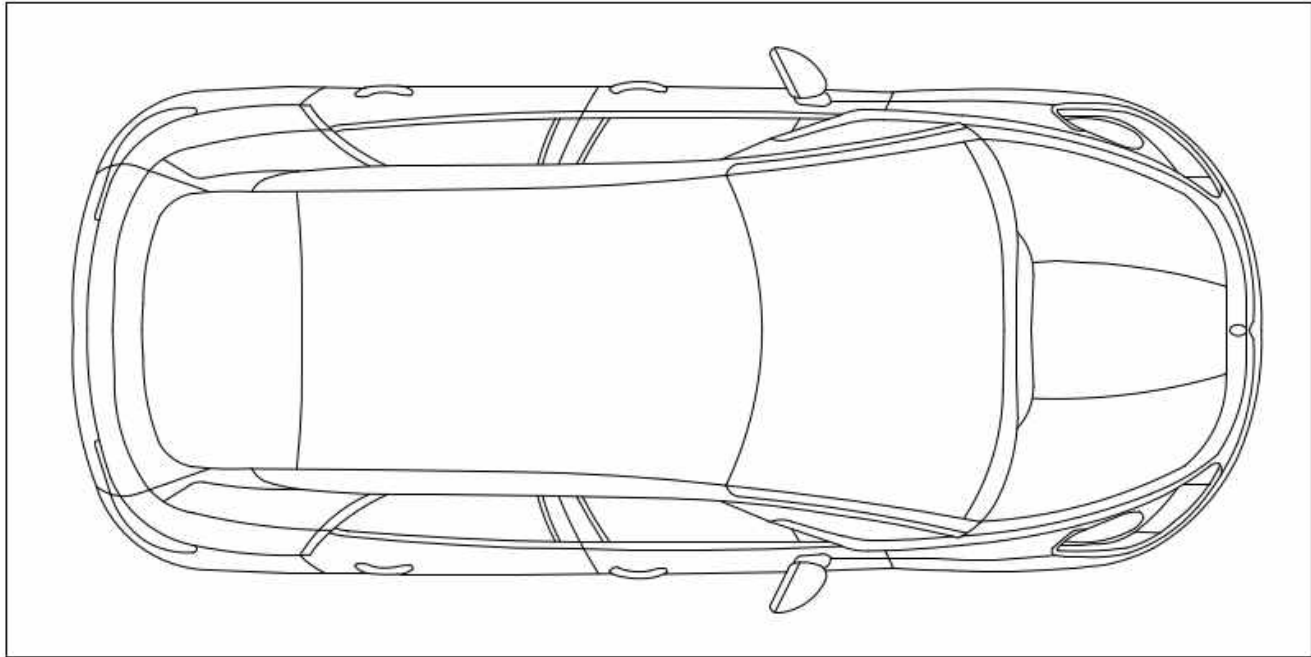






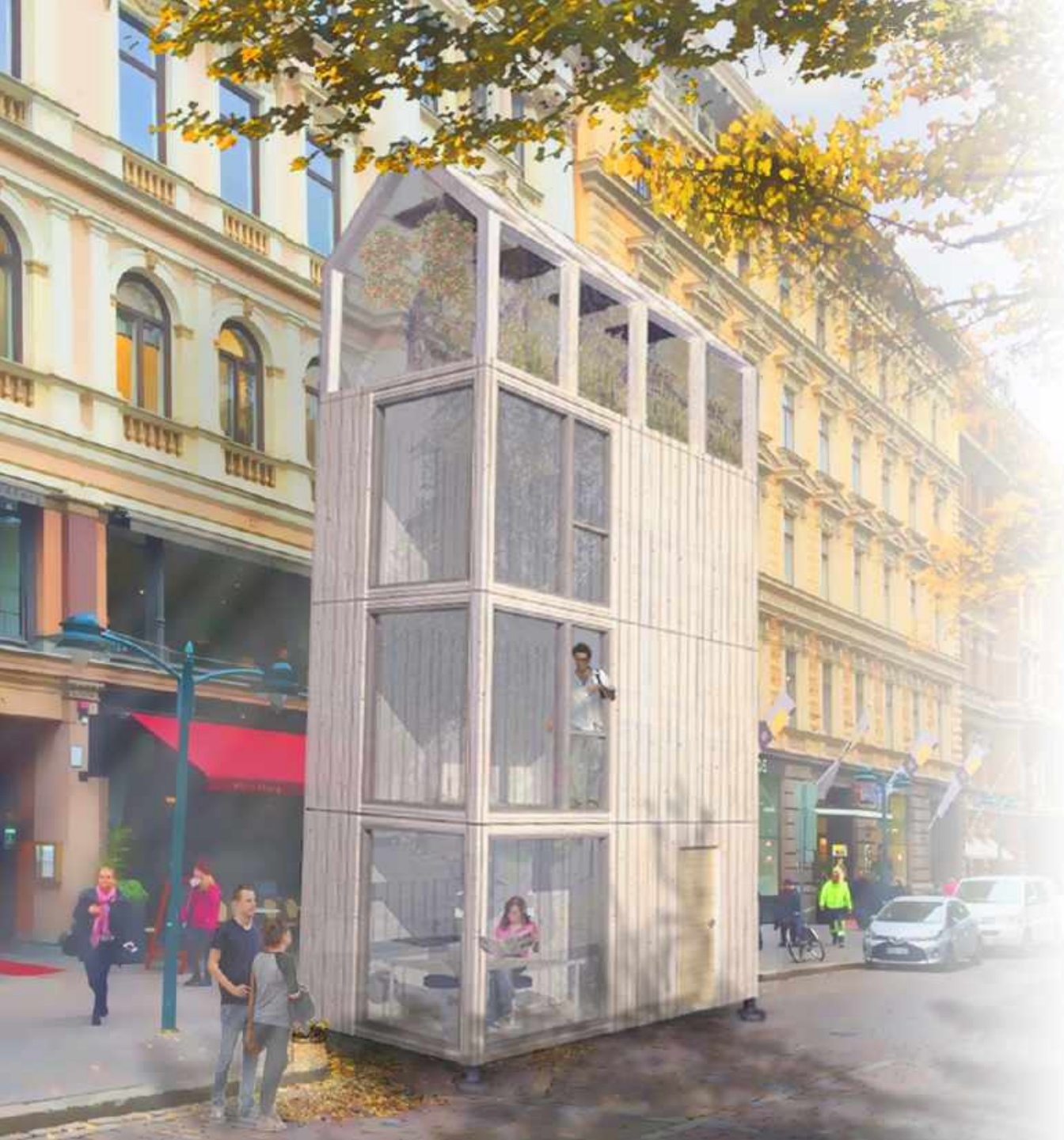
Генерал Чистопрудов | 28-300.ru | Photo Agency



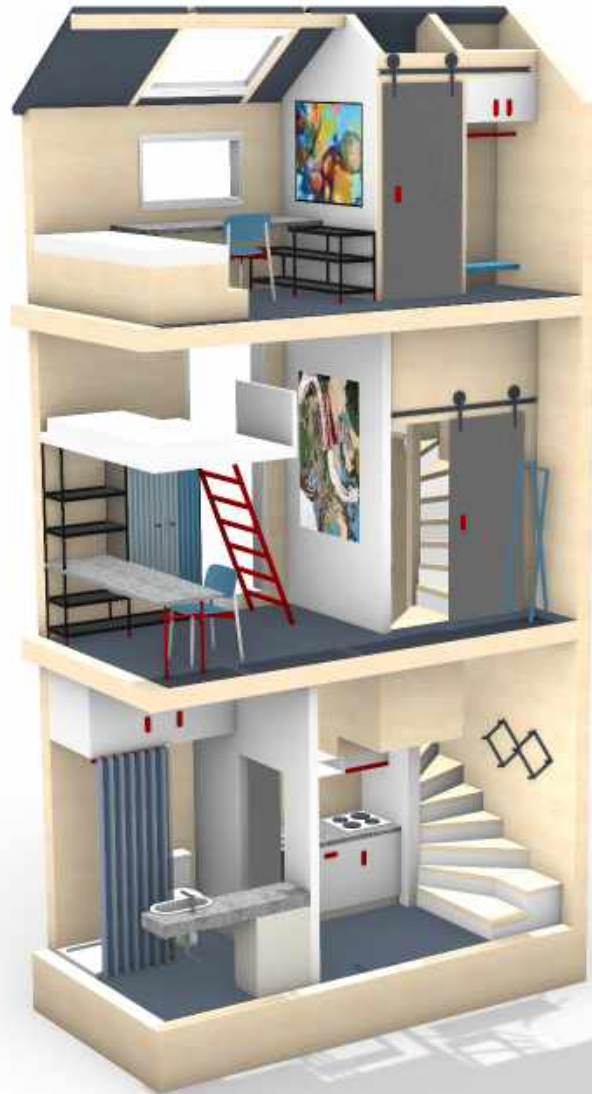


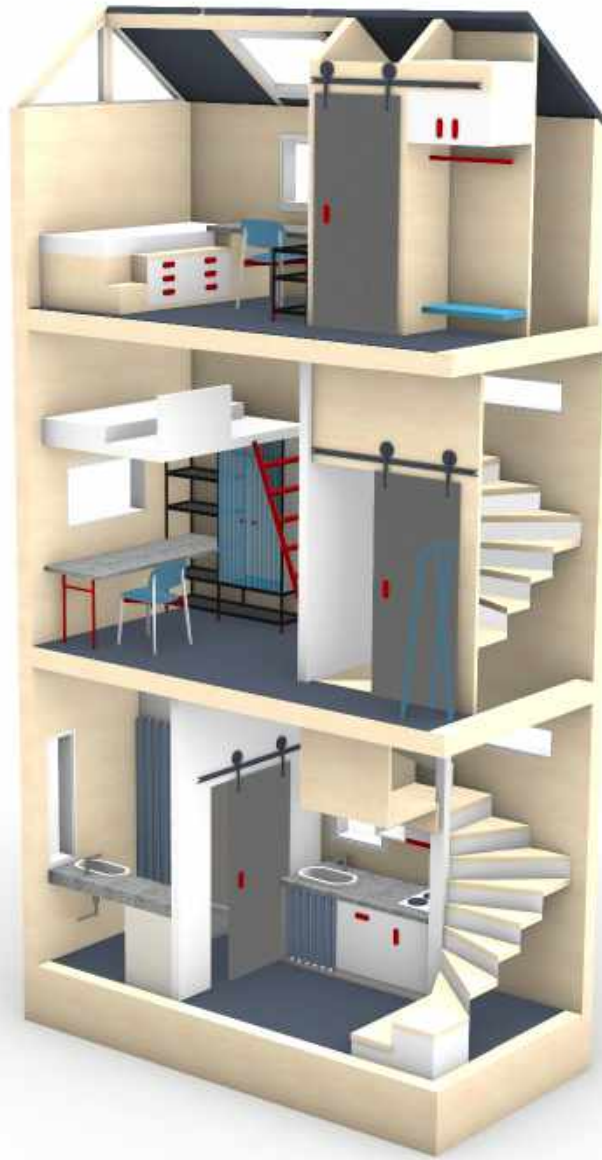
-----5000-----

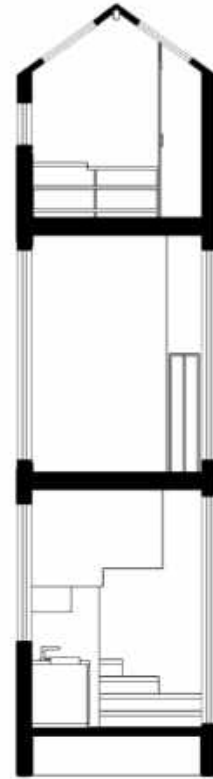
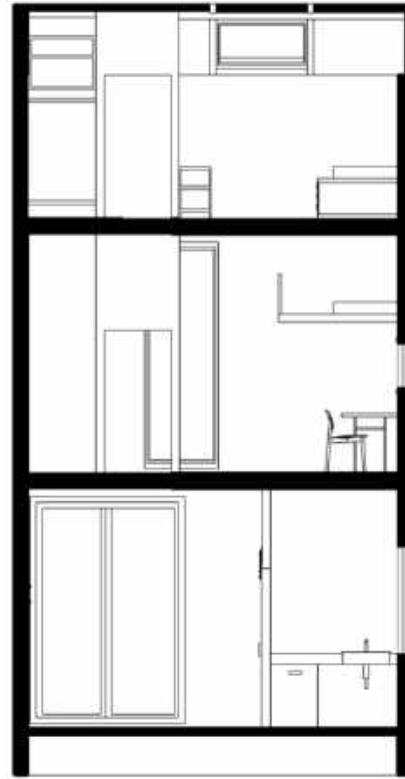
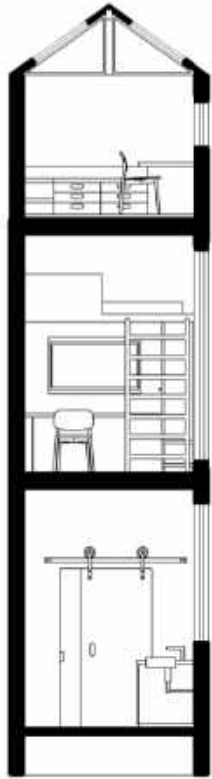
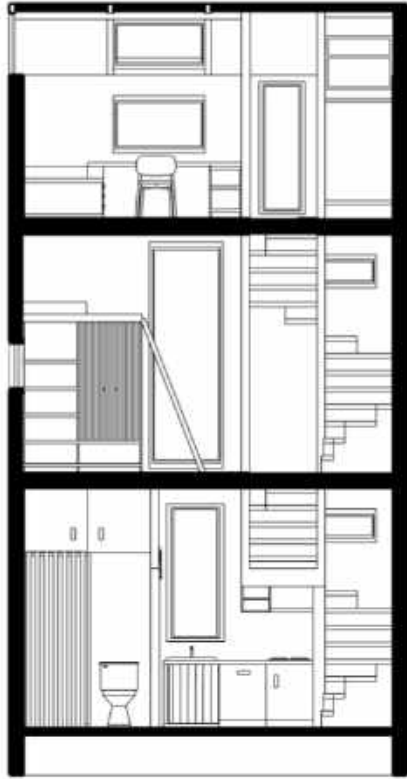
-----2500-----



CARS
OR
HOUSI
NG ?









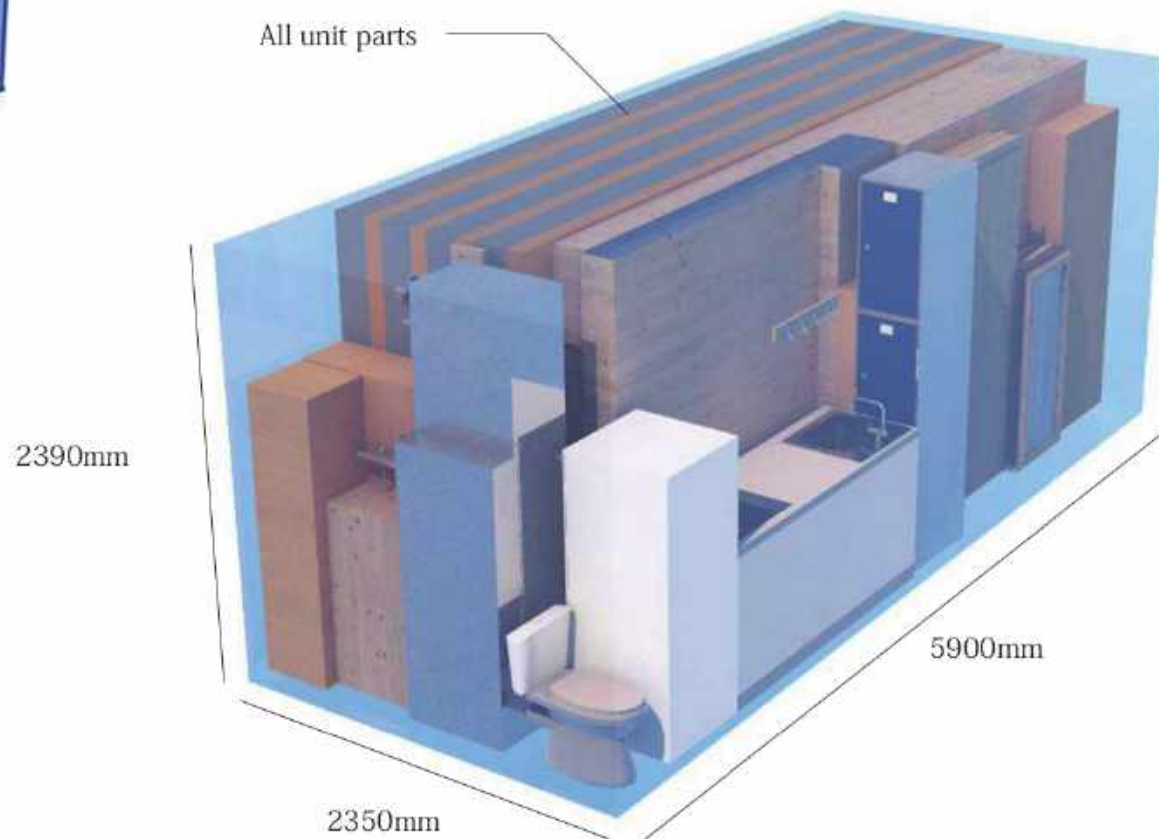




MODULE SYSTEM



Shipping container



2390mm

2350mm

5900mm

All the elements fit into a sea-container.







THANK YOU !

