

A scenic view of a park with a wooden walkway, a pond, and a city skyline in the background. The walkway is made of light-colored wood and curves around a pond. In the background, there are several tall apartment buildings under a hazy sky. The foreground is filled with lush greenery, including palm trees and tall grasses.

# Et sirkulært landskap i et globalt perspektiv

*Sonja Stockmarr, Global Design Director Landscape*



We are 195 qualified landscape architects around the world - working in all phases and in all climates

An aerial photograph of a cityscape. In the foreground, a modern building features a lush green roof with various plants and trees. The middle ground shows a dense urban area with a mix of residential and commercial buildings, interspersed with green spaces. In the background, a prominent tall brick tower with a spire stands out against a cloudy sky. The overall scene illustrates the integration of nature into an urban environment.

Nature is smart!

At Henning Larsen, we work with landscapes to create a better environment, solve social, urban, and climatic challenges, and add value for people by using nature's natural skills as resources by re-linking the cycles



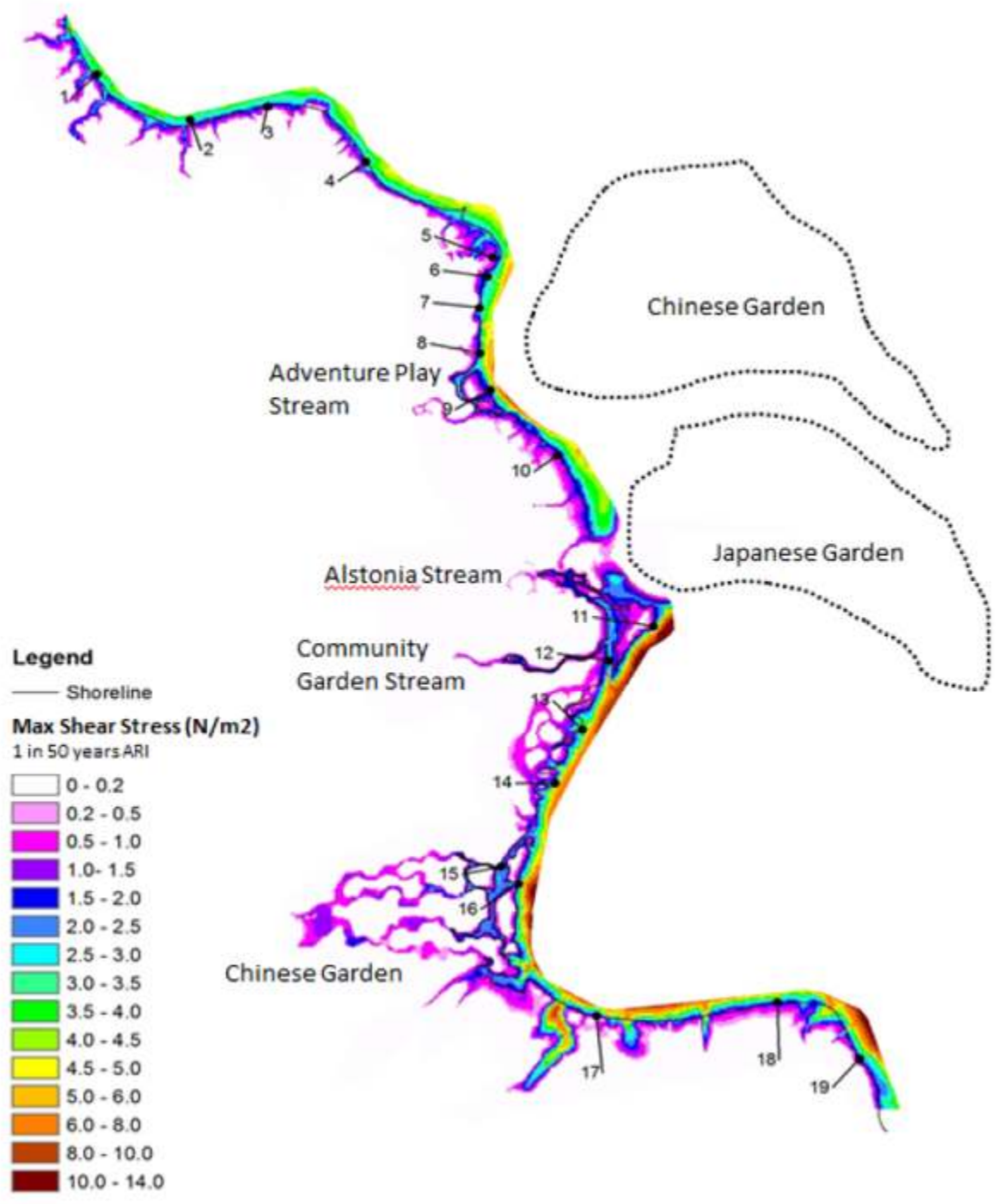
**Knowledge, data and innovation are key drivers to create sustainable design and to understand the cycles**



# Understanding cycles

An aerial photograph of the Jurong Lake Garden West area in Singapore. The image shows a large, irregularly shaped lake in the center, surrounded by dense residential and commercial buildings. A major road or railway line runs diagonally across the top of the image. The text 'Jurong Lake Garden West' is overlaid in the center in a large, white, sans-serif font.

# Jurong Lake Garden West



# Integration of nature and water cycles as activation for wildlife, play and learning



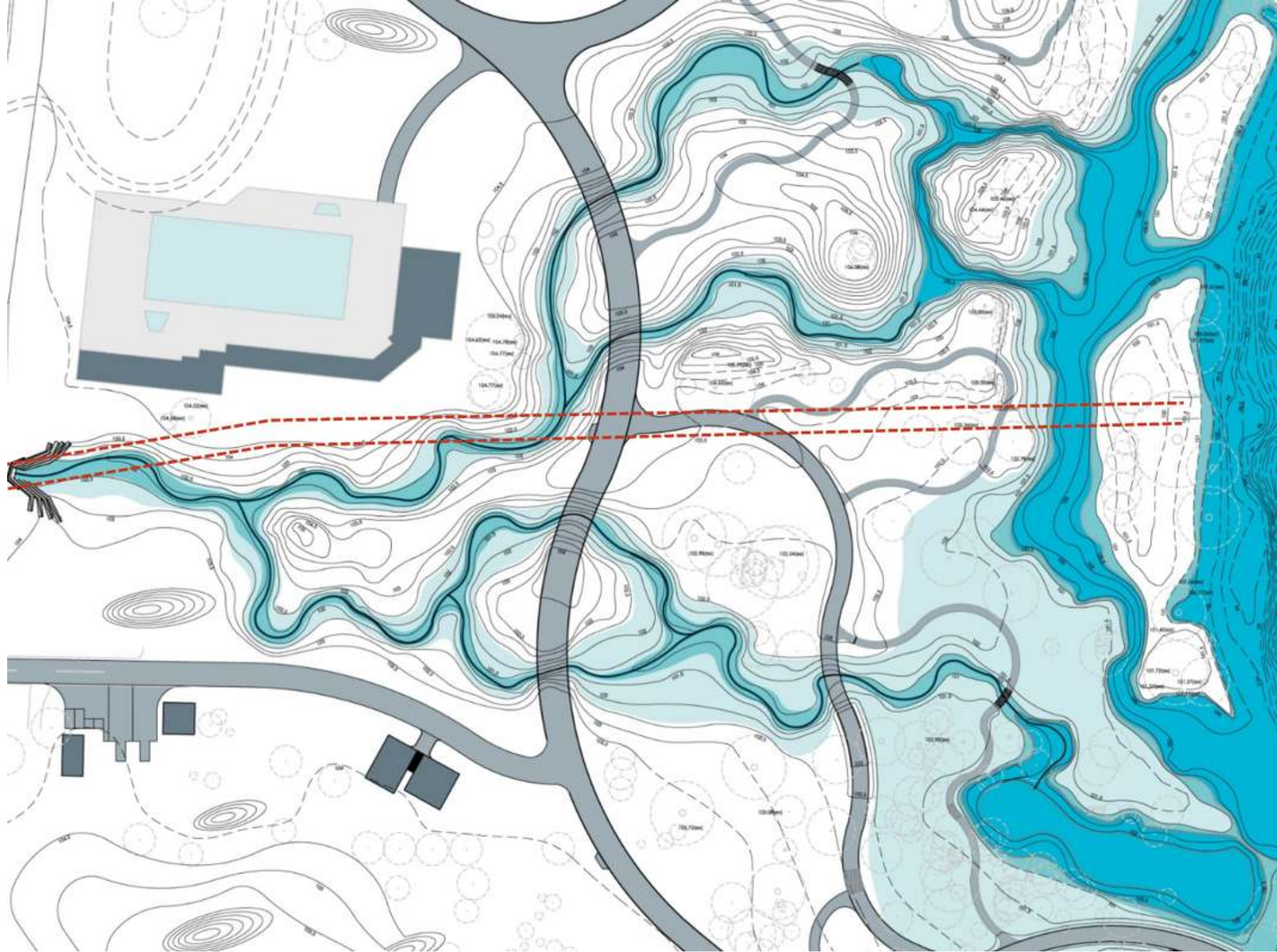


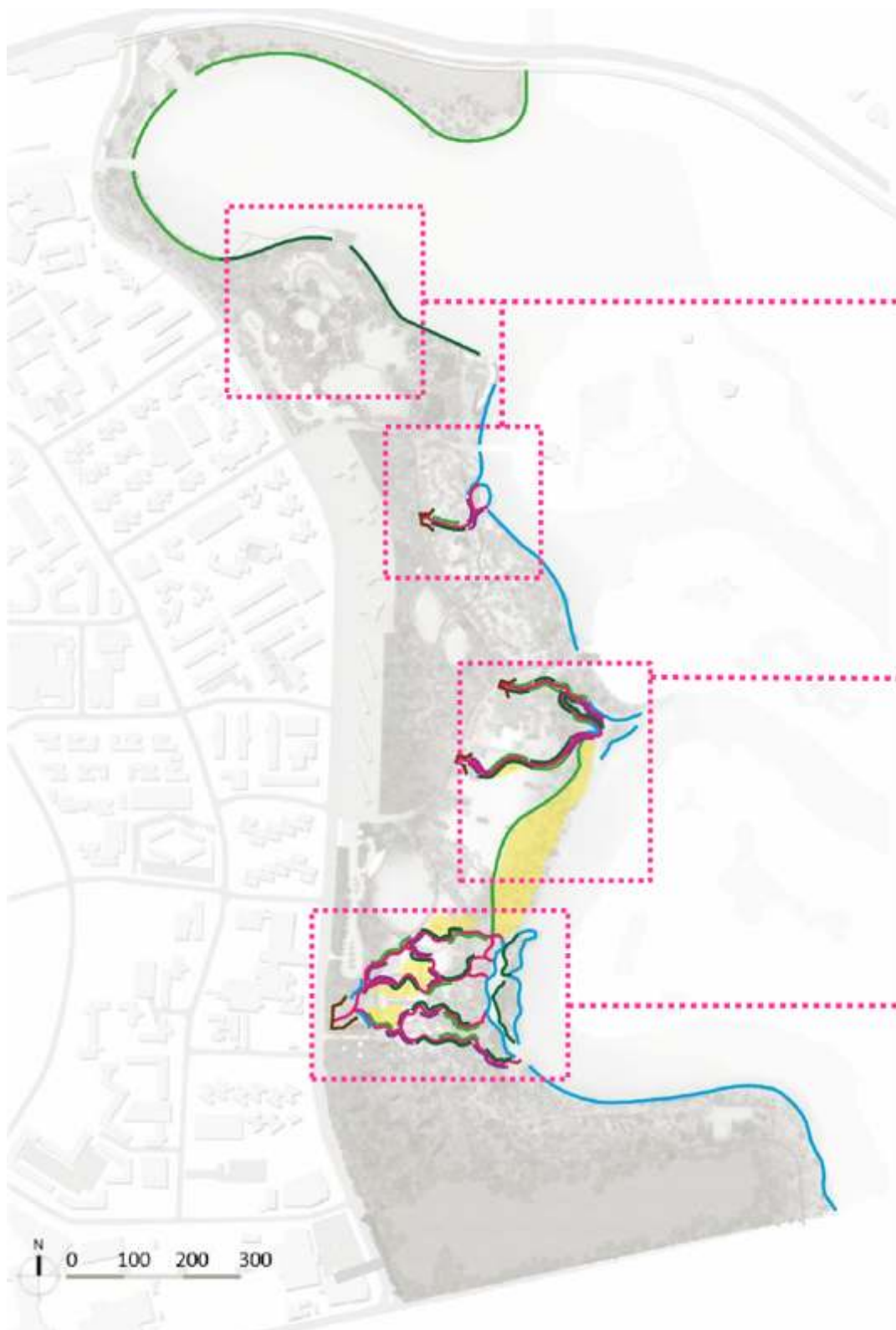


### LEGEND

- 1 Clusia Clove
- 2 North Carpark
- 3 Lakeside Field
- 4 Entrance Pavillion
- 5 BBQ Pits
- 6 PAssion WaVe
- 7 Fitness Corner
- 8 Forest Ramble
- 9 Butterfly Field
- 10 Butterfly Maze
- 11 Gardenhouse
- 12 Allotment Gardens
- 13 Alstonia Island
- 14 Dog Run
- 15 Grasslands
- 16 Rasau Walk
- 17 South Carpark
- 18 The Oval
- 19 Neram Streams
- 20 Heron Island
- 21 Southern Promenade

Project Masterplan





Cleansing Biotope and Ponds



Flooded Riverine and Tidal Edge



Wet Grassland Swales and Figus Islands



Hardwood  
From  
Fallen Trees

to

Bird Hide, Bird Platform,  
Habitat Logs,  
Logs Trail,  
Seats



Quality  
Excavated  
Earth

to

Site Fill,  
Mounds



Concrete from  
Structures  
& Paths

to

Bioengineering,  
Drainage swales,  
Walls, Stairs  
& Steps



Laterite  
Rocks

to

Feature  
Gabion Infill,  
Feature Rocks  
Along Trails





EcoPond

Tidal Pond

Ripple Pond

Cleansing  
Biotopes

UV Filter











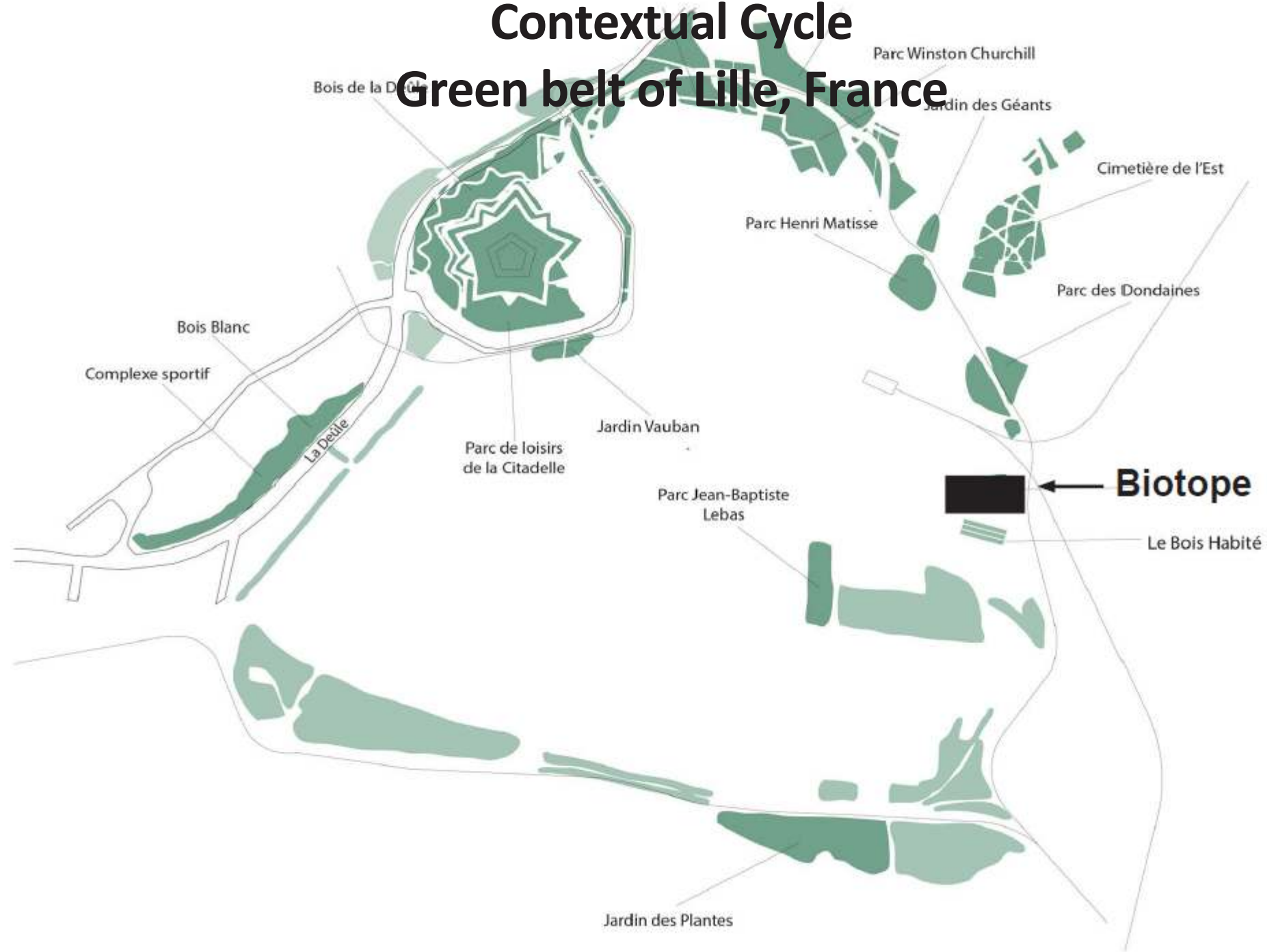




# Biotope

office and nature

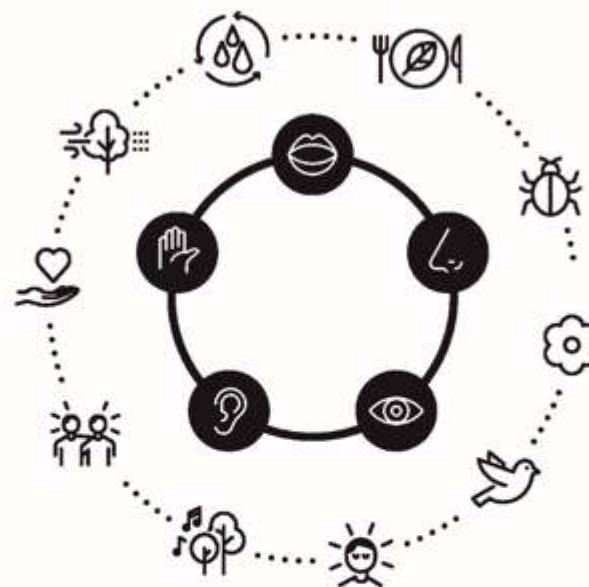
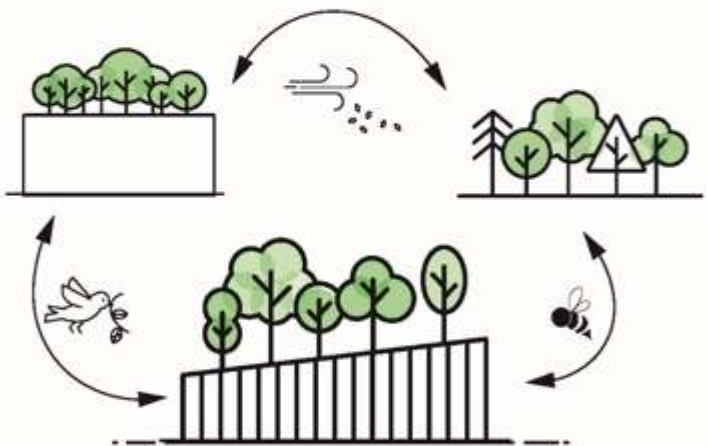
# Contextual Cycle Green belt of Lille, France



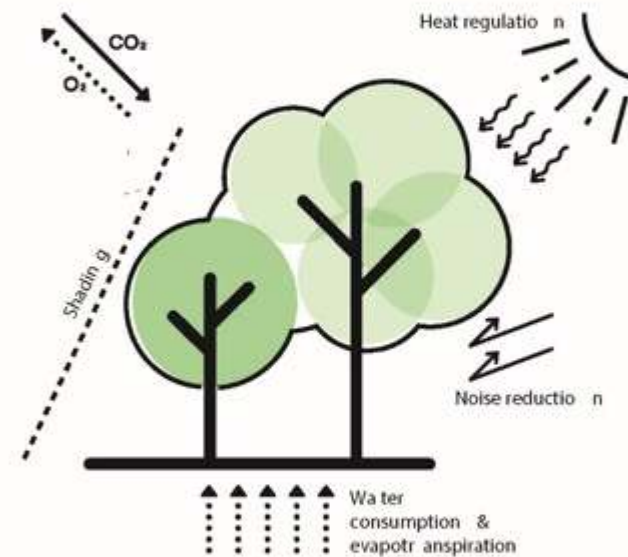
# Design Purposes

## BIOPHILIA

### BIODIVERSITY & ECOSYSTEM CONNEXION



### COMFORT & RESILIENCE



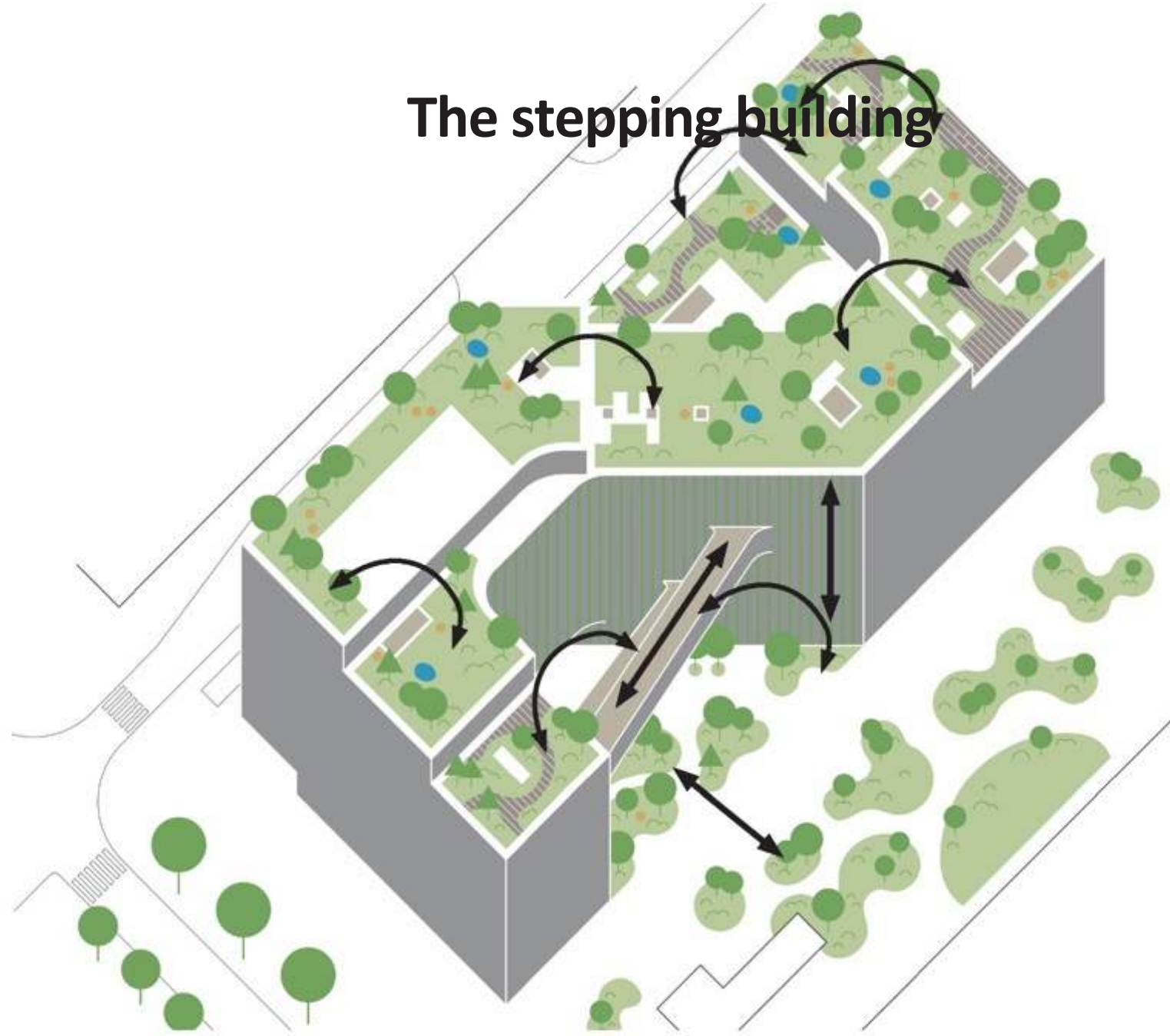


biodiversitycity



Henning  
Larsen

# The stepping building





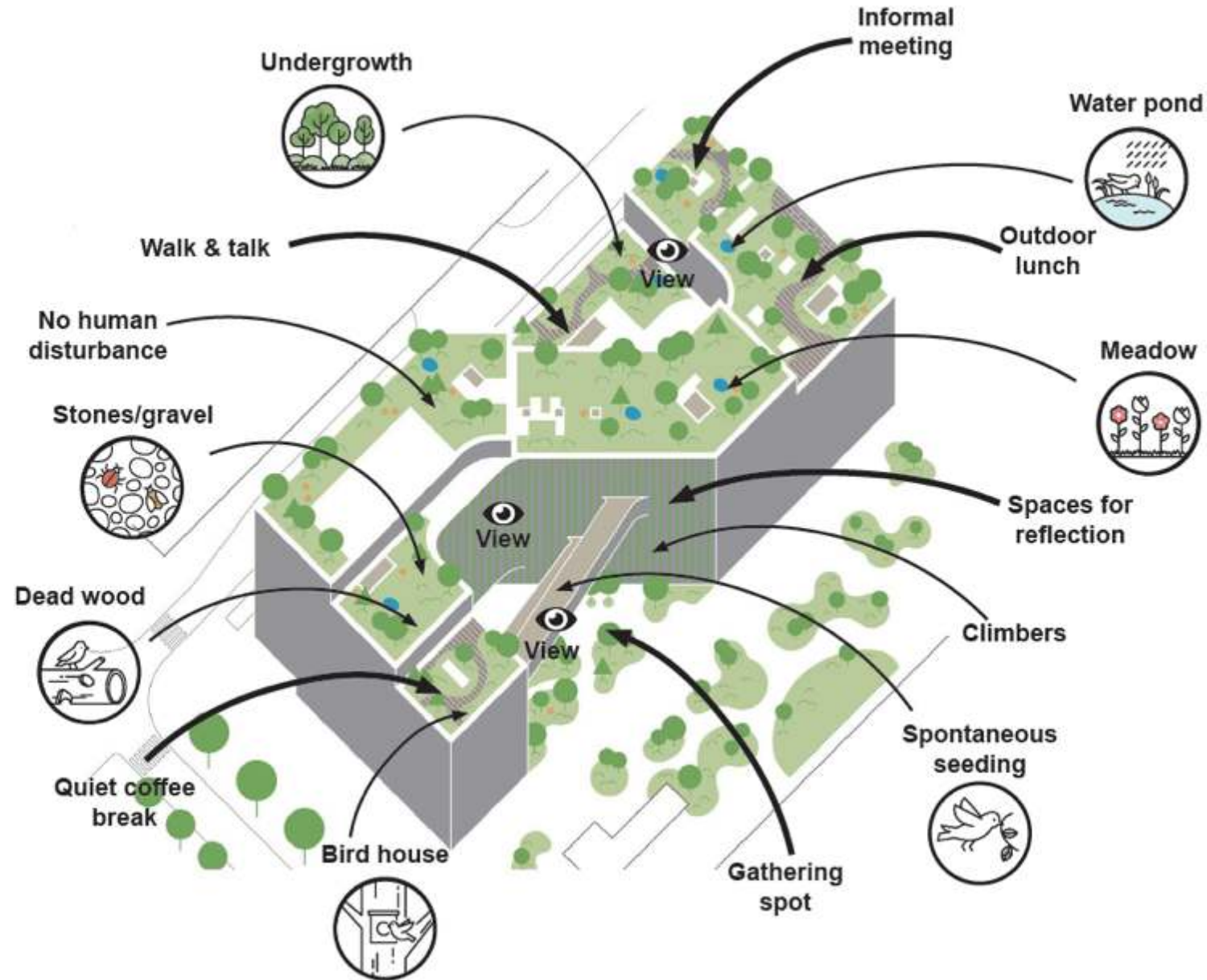
60% planted  
3300 m2 on roofs





# A diverse outdoor space

*Playing with technical constraints to compose a variable living and feeding environment for all*





# Planting implementation

## *Anchoring & watering system*

“Oasis system” (50L/m<sup>2</sup>) + dripline irrigation



Shaped rootball with roots high density



# Planting implementation

+/- 120.000 m<sup>3</sup>, 50% mineral - 50% organic



Chipped wood and on site green waste







A great opportunity to bring architecture  
and landscape to the next level!!