

LA170 reserch paper

Gardens of borrowed scenery in Kamakura, Japan

Kenjiro Kito 22494096

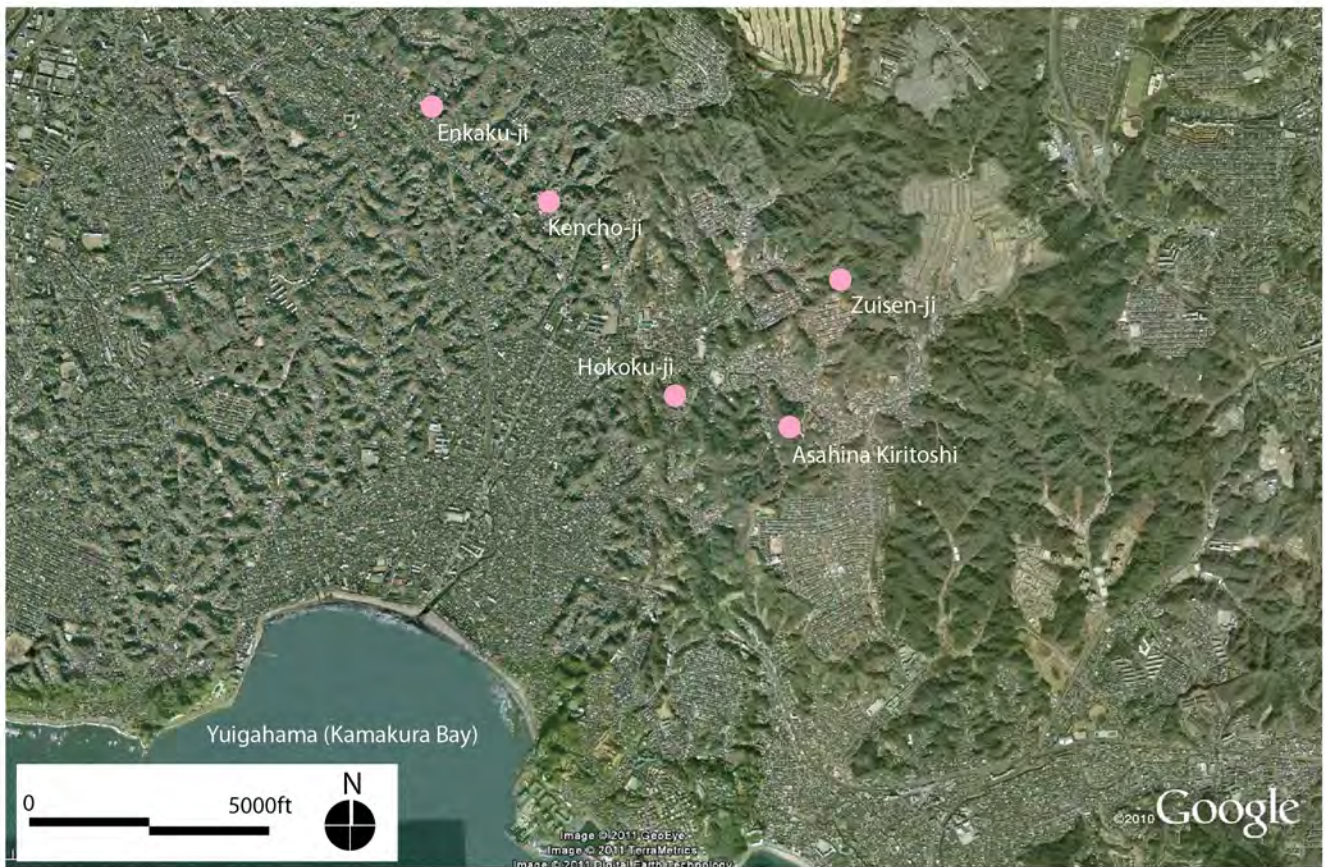


Fig.1 Kamakura garden map



Fig.2 Kyoto garden map



Fig.3 Asahina Kiritoshi remains the same as it was in Kamakura period



Fig.4 A pathway in a valley near Hokokuji

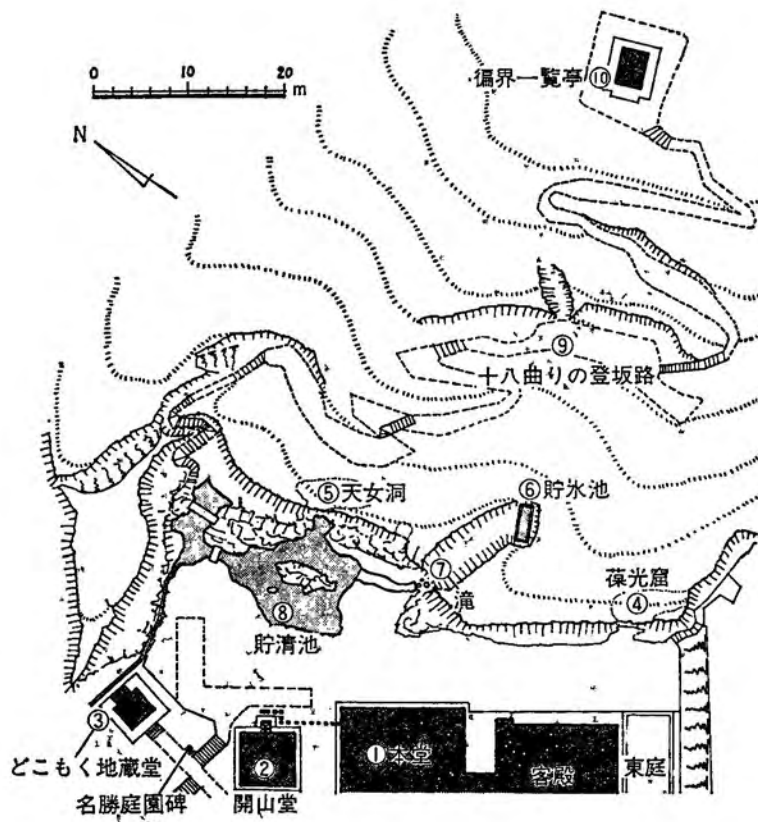


Fig.5 Zuisenji plan

Kawahara, Taketoshi. Meien no midokoro :
Tokyo: Tokyo nogyo daigaku syuppankai, 1983



Fig.6 Zuisenji pond garden



Fig.7 Mt. Fuji looked from around the view pavilion of Zuisenji

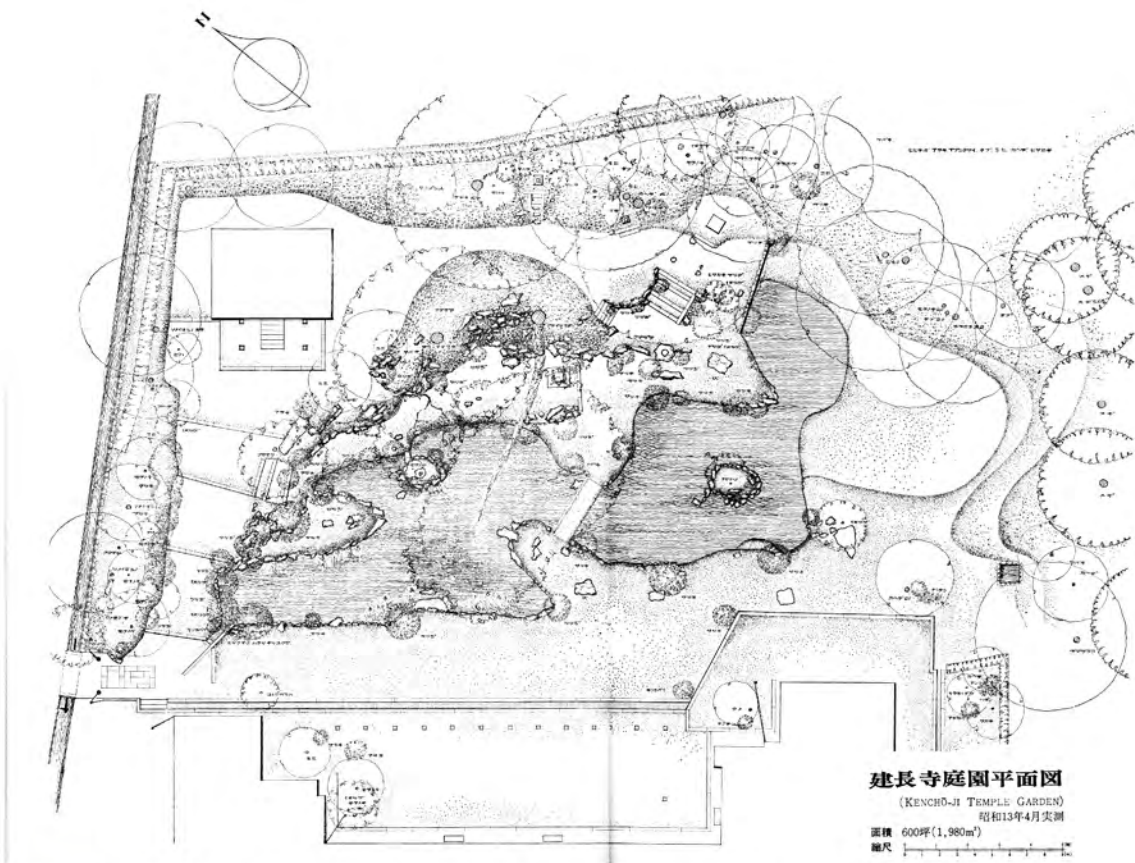


Fig.8 Kencho-ji plan Shigemori, Mirei. Shigemori, Kanto. Ohashi Haruzo. Nihon no Teien shi taikēi (Comprehensive history of Japanese Gardens). Tokyo: Syakaisyuppansya, 1971-76.



Fig.9 Kencho-ji pond garden and background mountains



Fig.10 Kencho-ji Kaisyun-in garden



Fig.11 Enkaku-ji arial view



Fig.12 Enkaku-ji Myosho pond garden



Fig.13 Hokoku-ji arial view



Fig.14 Hokoku-ji bamboo garden

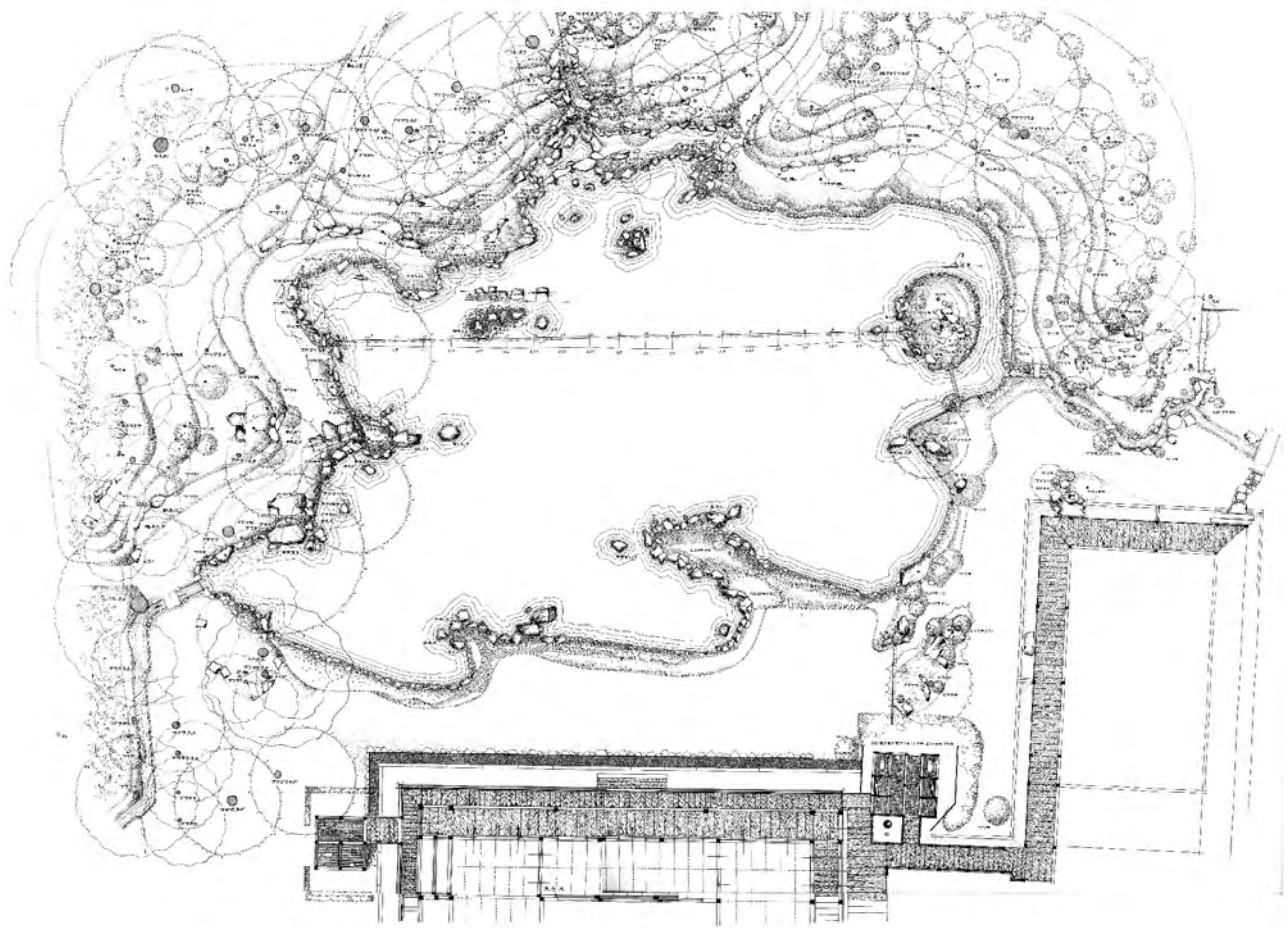
Miyamoto, Kenji. Kamakura no Teien (Gardens in Kamakura). Yokohama: Kanagawa Shinbunsha, 1998.



Fig.15 Hokoku-ji, Sunlight reaches the bamboo garden from above



Fig.16 Hokoku-ji, Stony slopes



竜寺庭園平面図 (TENRYŪ-JI TEMPLE GARDEN) 面積 1,200坪(3,960m²)
昭和13年4月実測 縮尺 1:10,000

Fig.17 Tenryū-ji plan Shigemori, Mirei. Shigemori, Kanto. Ohashi Haruzo. Nihon no Teien shi taikai (Comprehensive history of Japanese Gardens). Tokyo: Syakaisyuppansya, 1971- 76.



Fig.18 Tenryū-ji pond garden and borrowed scenery

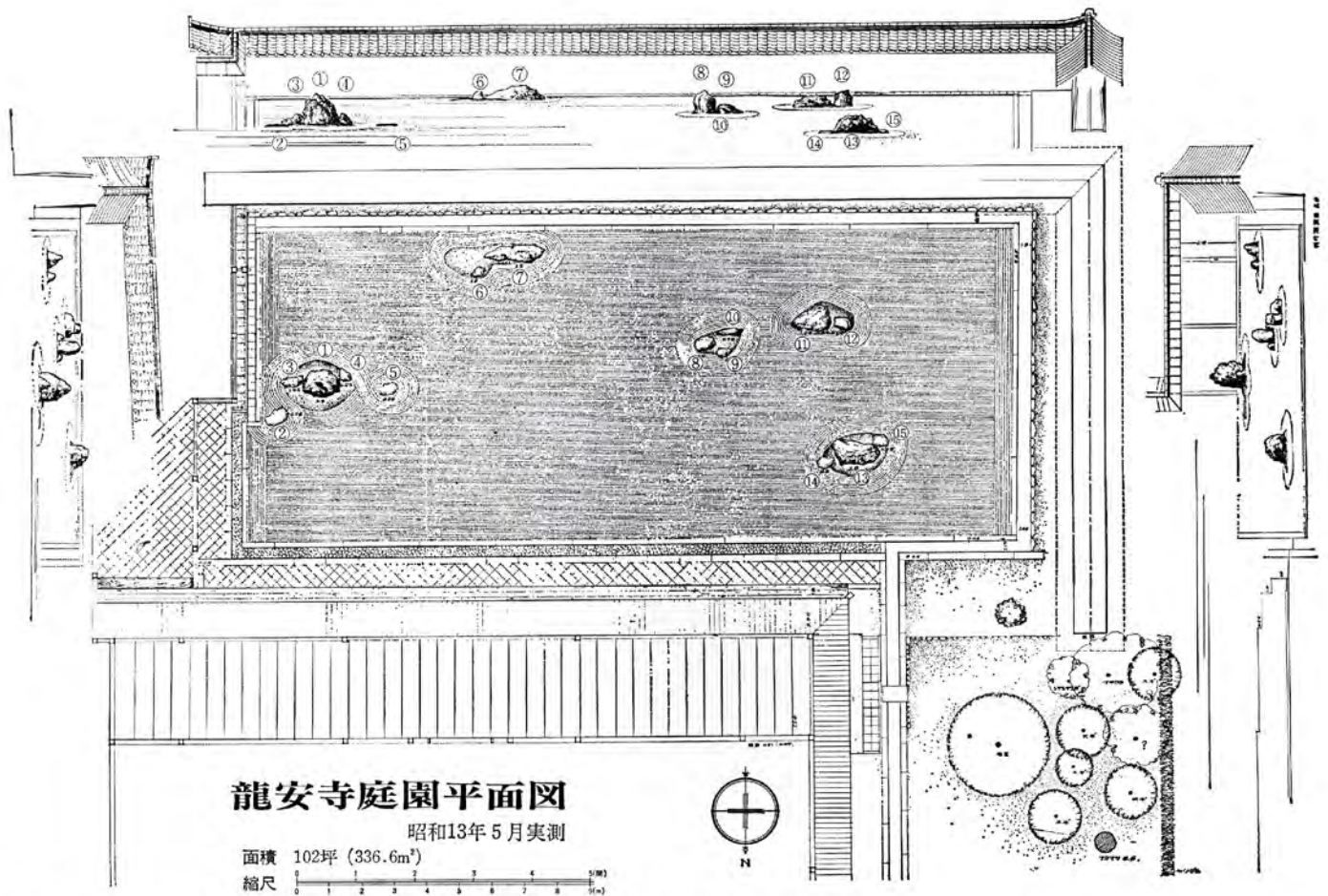


Fig.19 Ryōan-ji plan Shigemori, Mirei. Shigemori, Kanto. Ohashi Haruzo. Nihon no Teien shi taikēi (Comprehensive history of Japanese Gardens). Tokyo: Syakaisyuppansha, 1971- 76.



Fig.20 Ryōan-ji karesansui



Fig.21 Ryōan-ji drawing in Miyakorinsen Myōshyōzue Miyamoto, Kenji. Nihon Teien no Mikata (Guide to read Japanese gardens). Kyoto: Gakugei Shinbunsha, 1998.

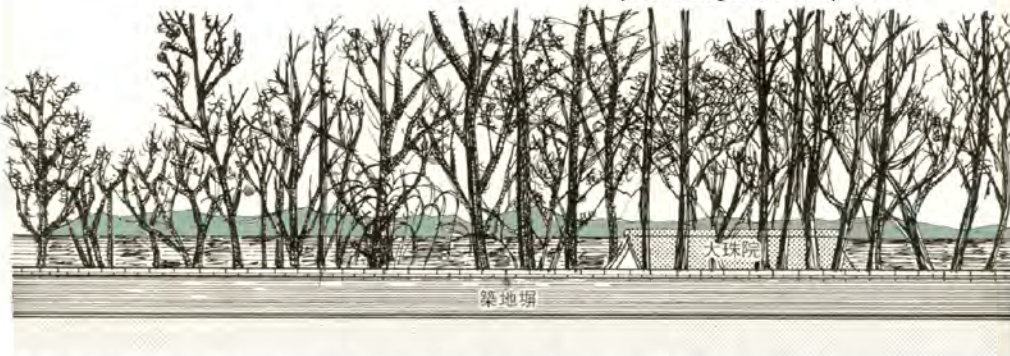


Fig.22 Ryōan-ji Syakkei Miyamoto, Kenji. Nihon Teien no Mikata (Guide to read Japanese gardens). Kyoto: Gakugei Shinbunsha, 1998.

真珠庵庭園平面図

(SHINJU-AN GARDEN)

昭和31年2月実測

面積 方丈東庭 15坪(50m²)
庭玉軒露地 20坪(66m²)

縮尺 1:1000

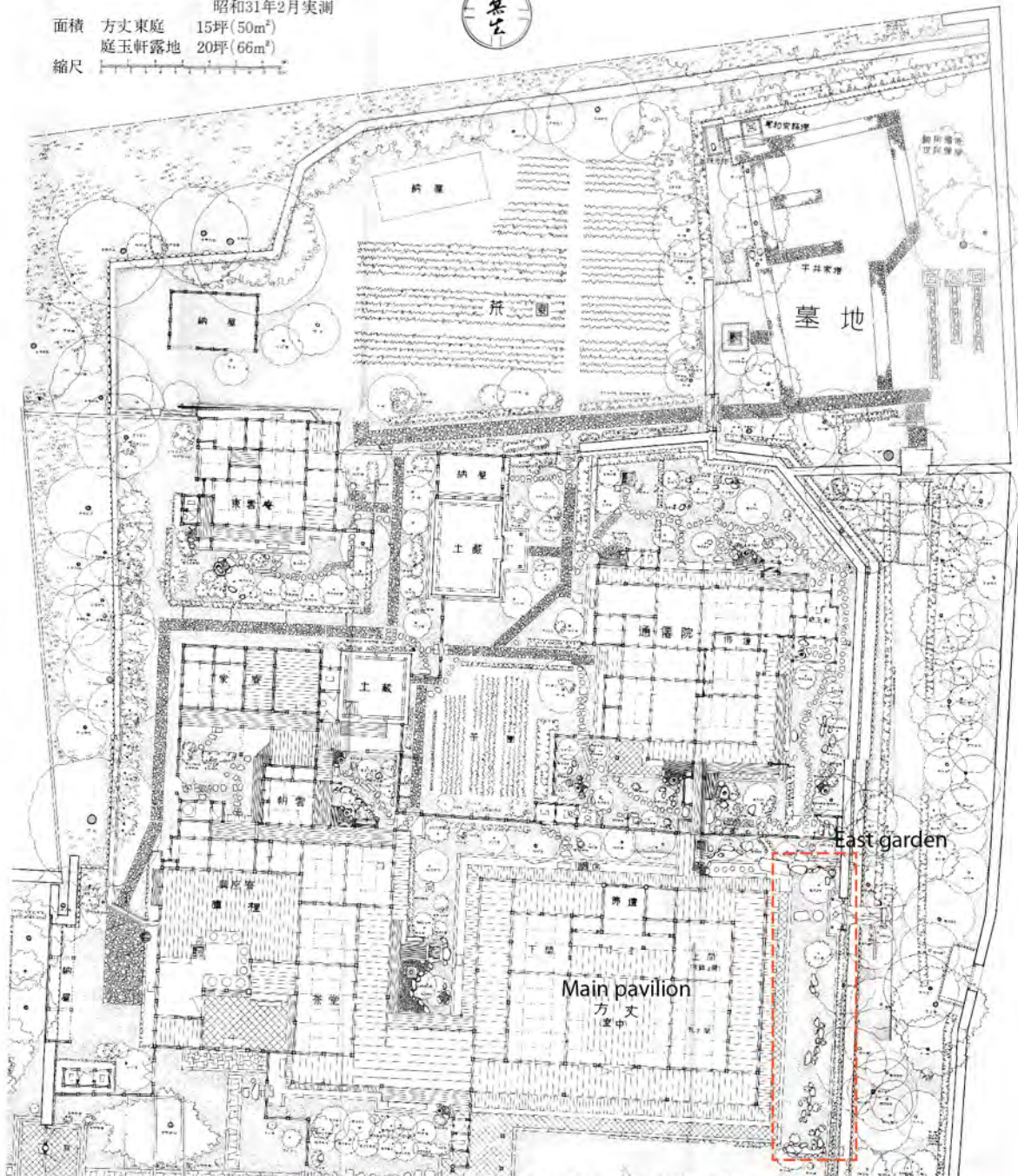


Fig.23 Shinju-an plan Shigemori, Mirei. Shigemori, Kanto. Ohashi Haruzo. Nihon no Teien shi taikai (Comprehensive history of Japanese Gardens). Tokyo: Syakaisuyupansya, 1971- 76.

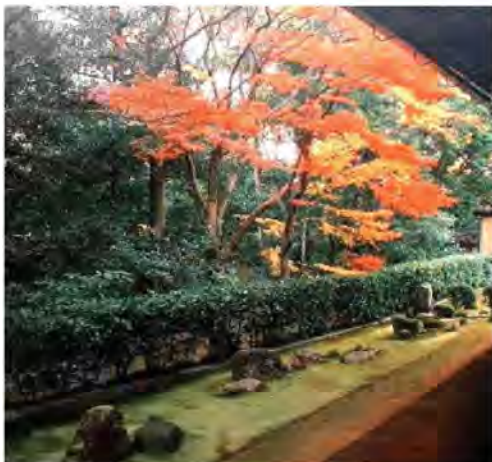


Fig.24 Shinju-an East garden



Fig.25 Shinju-an East garden rock work



Fig.26 Fushin-an plan Shigemori, Mirei. Shigemori, Kanto. Ohashi Haruzo. Nihon no Teien shi taikei (Comprehensive history of Japanese Gardens). Tokyo: Syakaisyuppansha, 1971- 76.



Fig.27 Fushin-an tea garden



Fig.31 Shugaku-in, View from pathway in the rice fields

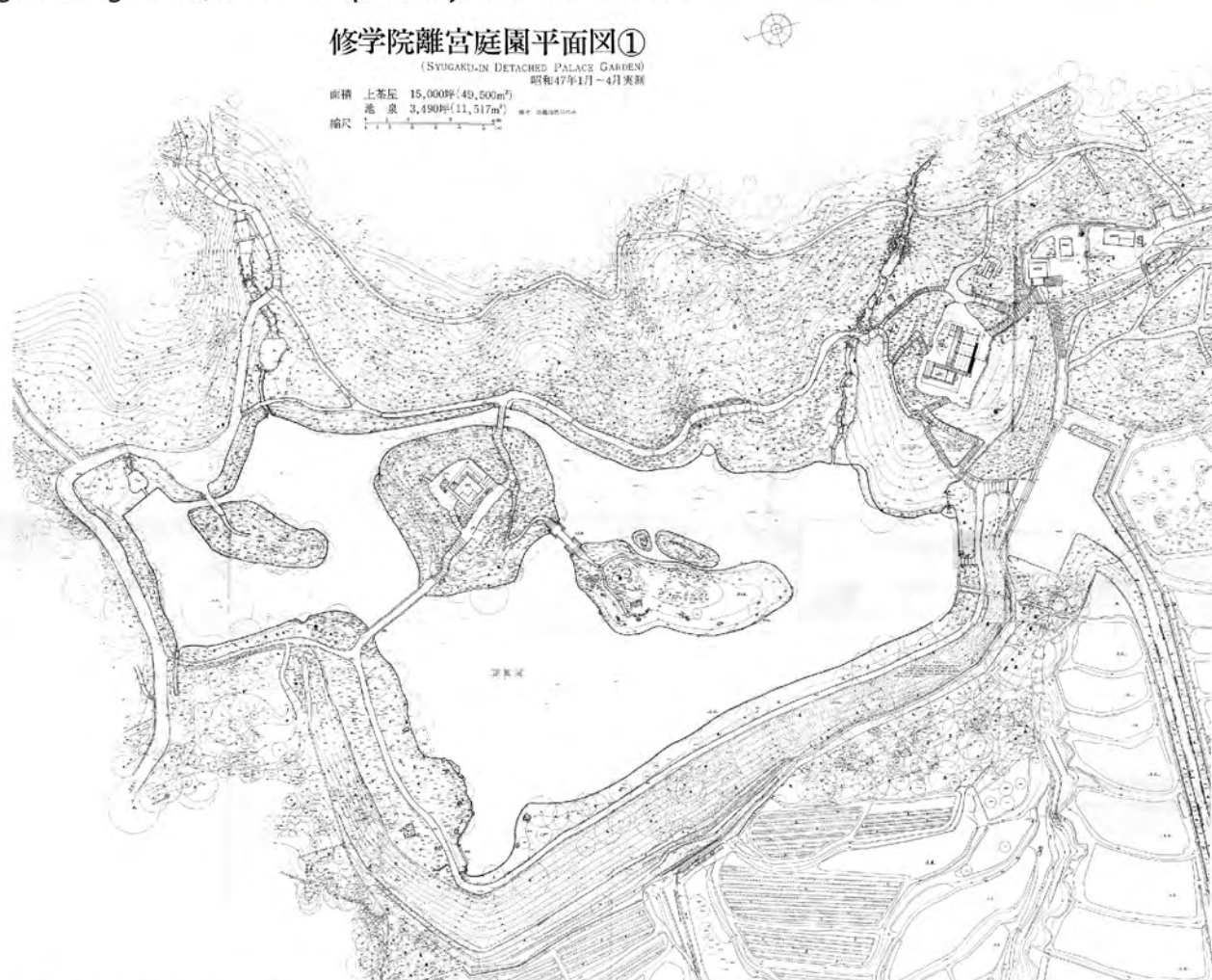


Fig.32 Shugaku-in detailed plan of upper garden

Shigemori, Mirei. Shigemori, Kanto. Ohashi Haruzo. Nihon no Teien shi taikai (Comprehensive history of Japanese Gardens). Tokyo: Syakaisyuppansya, 1971- 76.



Fig.33 kencho-ji arial view



Fig.34 Satoyama near Kencho-ji arial view

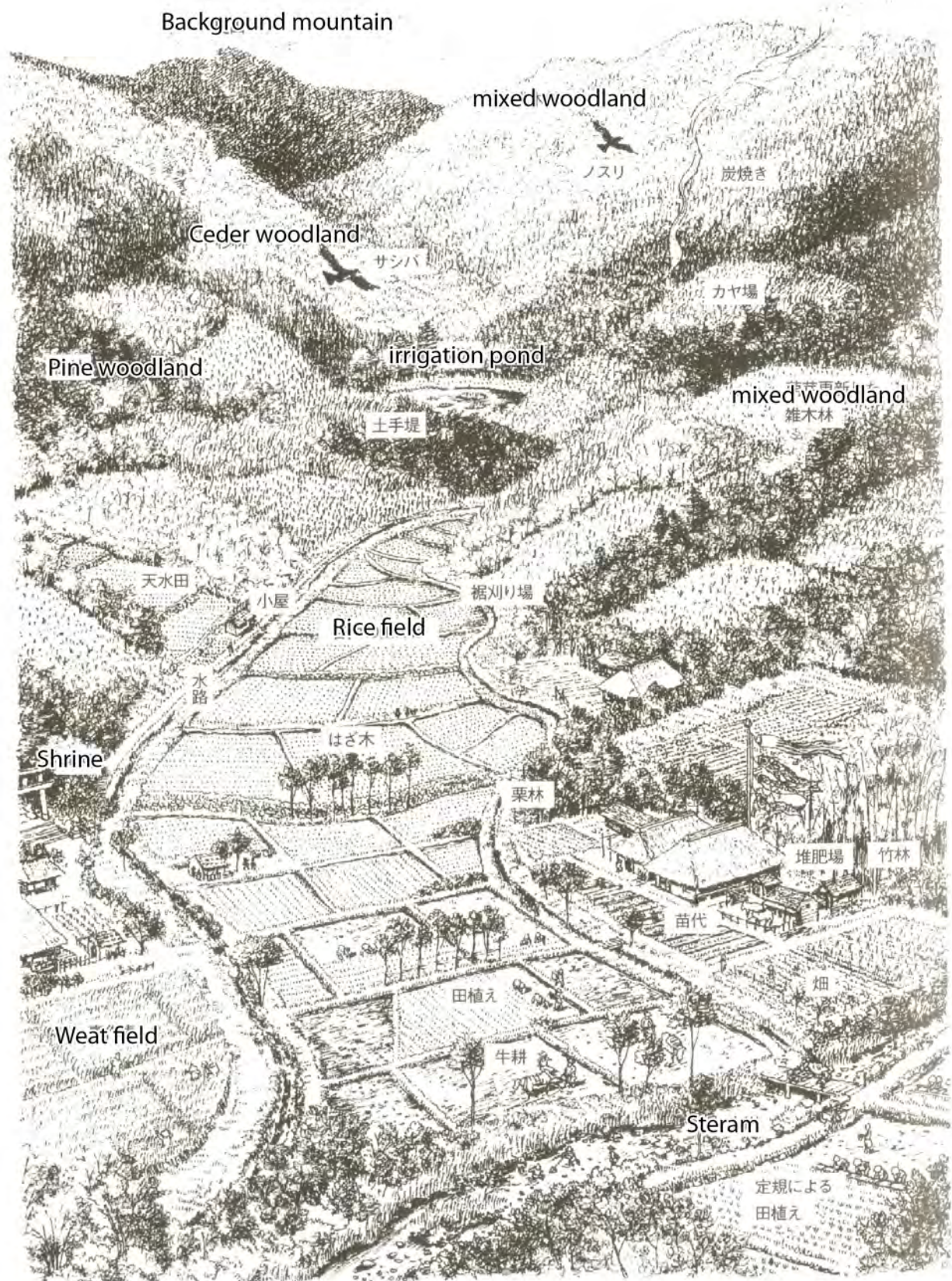


Fig. 35 Typical Satoyama, spatial unit of Jaoanese traditional agriculture

Yabu, Shinobu. Satochi Satoyama Bunka-ron :Tokyo: Nosanson bunka kyokai, 2009